

# IFMA ATLANTA ANNUAL REPORT

2022-2023





# TABLE OF CONTENTS

- Mission, Purpose, & Objectives
- President's Report
- Officers & Committee Chairs
- Business Partners
- Balanced Score Card
- Year in Review
- Financials & Membership



# MISSION, PURPOSE, & OBJECTIVES

## **Mission**

The Atlanta Chapter of IFMA is the premier, focused resource for professional development and innovative solutions in strategic Facility Management.

## **Purpose**

To support a community that fosters vitality, momentum and impact for the facility management professional and associate members

## **Objectives**

- Provide and engage Chapter members with opportunities that expand their professional growth, build business relationships, and advance their career paths
- Inspire passion for the facility management profession that compels and engages facility practitioners to join and participate in the IFMA network, offers unique value with that participation, and attracts volunteer leaders
- Sustain Atlanta Chapter of IFMA's financial integrity

# PRESIDENT'S REPORT

Dear Members and Business Partners,

I am pleased to bring you IFMA Atlanta's Annual Report for 2022-2023.

This year our Board and Committee chairs have worked tirelessly to provide value to our members through a diverse portfolio of educational opportunities.

While all the work that has been done is important, I would like to highlight some of the outstanding accomplishments.

The membership committee increased visibility this year by providing representation and therefore the opportunity to join at events across the chapter. They also worked to identify and encourage IFMA national members to join locally.

The education committee continued to provide excellent educational opportunities within our quarterly meetings and in addition to with stand alone lunch and learn sessions. This year also saw the return of a local CFM study group.

The tours committee continues to find world class venues that are willing to share their spaces and stories with the FM community. This year also saw collaboration on the Mercedes Benz tour between the tours committee and the IFMA WE Atlanta hub.

The golf classic committee continues to go above and beyond in innovation. The addition of "Beat the Pro" and other challenges not only has made the events more attractive to golfers but also has been a major financial boost to our organization.

The Atlanta Workplace Committee held 2 successful event this year!

The Accredited Degree Program continues to provide support to GA Tech and KSU fm programs as well as supporting the GA Center for Non Profits, SkillsUSA and Facilitathon.

I am so proud to have served as President of IFMA Atlanta this year and I would like to say a heartfelt thank you to all who have given your time and energy to make IFMA Atlanta such a wonderful organization. This year has been an amazing illustration of why the work you do is so important, and I look forward to seeing what lies ahead in the years to come!

Warmest Regards,

Lyle D Gladney

Chapter President, 2022-2023



# 2022-2023 OFFICERS



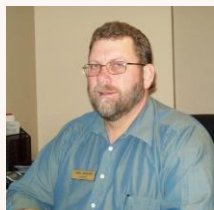
**LYLE GLADNEY**  
President



**Trent Patterson**  
Vice President



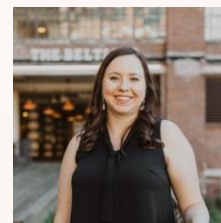
**DEBI GILBERT**  
VP Communications



**Greg Hebert**  
VP Professional  
Development



**MACHELLE CLARKE**  
Secretary



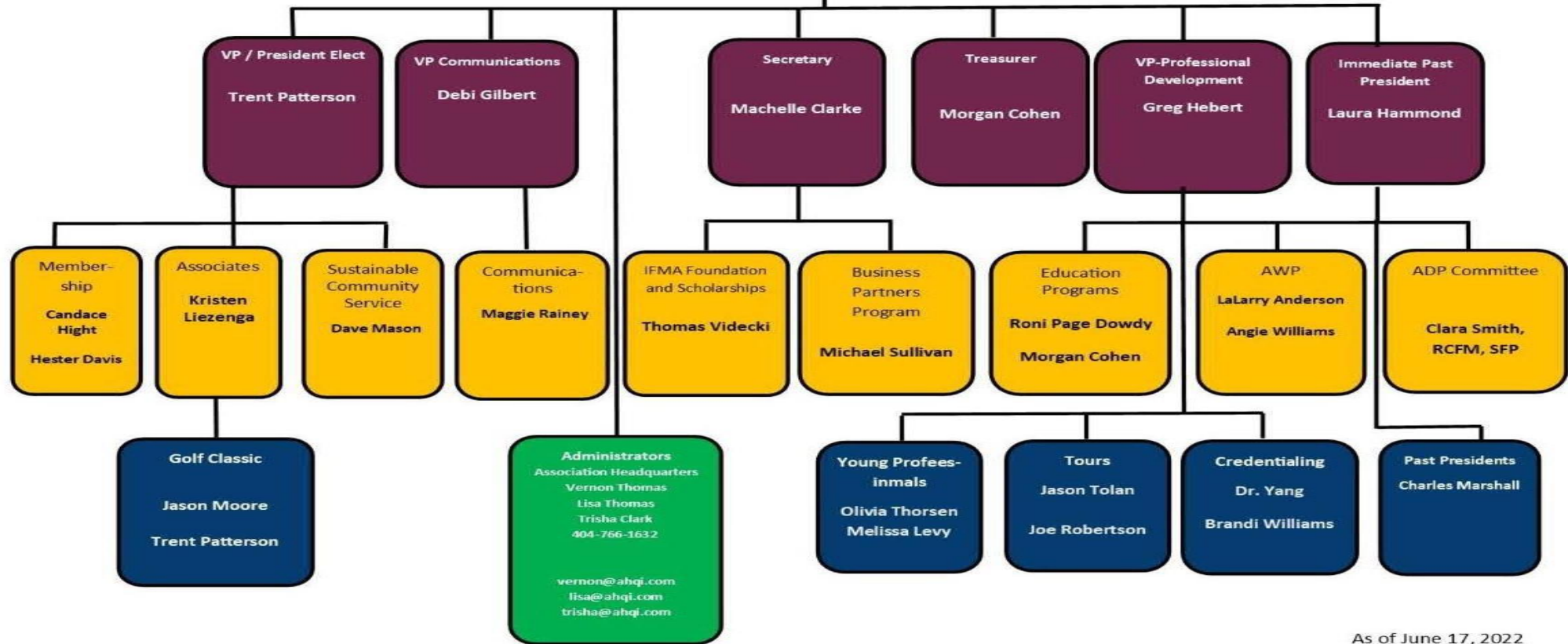
**Morgan Cohen**  
Treasurer



**LAURA HAMMOND**  
Treasurer

**PRESIDENT**  
Lyle Gladney, CFM, FMP

**2022-2023 BOARD OF DIRECTORS**



As of June 17, 2022



# 2022-2023 Business Partners



# BALANCED SCORECARD

Each year the IFMA Atlanta Chapter Board updates its *balanced scorecard*. The scorecard contains seven objectives that provide purpose and accountability for the organization.

This year's focus was on reconnecting members in the aftermath of Covid by providing educational opportunities at quarterly luncheons, lunch and learns. The Board also worked on strengthening IFMA's financial position through a deeper dive into fiscal responsibility and revamping the golf classics.

1

## GROW & ENGAGE

In-person,  
virtual, and  
combined events

2

## EDUCATE

Quarterly  
Education Mtgs  
CEUs  
CFM Study  
Groups

3

## BUILD RELATIONSHIPS

Golf Classic  
Associates  
Events



# BALANCED SCORECARD, ctd.

4

COLLABORATE  
Georgia Tech  
Kennesaw State  
Facilithon  
CEFGA/Skills  
USA

5

FACILITATE  
New Members  
Meetings  
FM Tours

6

DEVELOP  
LEADERS  
Young  
Professionals

7

MAINTAIN  
FISCAL  
VIABILITY  
Business  
Partners  
Program



# BOARD SWEARING-IN 6.20.22

Host: Prime Power

The 2022-2023 Executive Board and Committee Chairs had a very productive Retreat/Planning meeting. The new board was sworn in by Immediate Past President Laura Hammond.





# QUARTERLY EDUCATION MTG 9.14.22



Location-Chick-Fil-A  
Support Center

CFA employees Christina Coleman, Jessica Hart and Heather Beaubien discussed new builds, renovation, maintaining of corporate campus. strategies of new construction, and the maintenance of over 2800 restaurants in the US, PR and Canada.

After the meeting, many attendees stayed for a tour.

# QUARTERLY EDUCATION MTG 2.8.23



Location-Bank of America Plaza

Brock Ryan & Karla Baldini of Fortress Consulting provided an informative presentation on Active Shooter Preparedness.



# QUARTERLY EDUCATION MTG 5.3.23



Location-Inspire Brands

How to manage Narcissists, Naysayers, and Know it Alls.

Speaker-Wayne Whitzell

Informative discussion of recognizing and managing difficulties in the workplace.

# Holiday Luncheon & Awards Ceremony 12.2.22



Location-Country Club of Roswell

## Award Winners

Distinguished Member Award- Ken Stephenson  
Martha Osborne CFM Award-Machelle Clarke  
Harry Ludwig Community Service Award-LaLarry Anderson  
Associate Member of the Year-Candace Hight  
Achievement in FM- William Broome



i



# Atlanta Workplace 2022 8.19.22



Location: Zoo Atlanta-Savannah Hall

AWP was postponed due to the Covid epidemic. It was held at Zoo Atlanta's Savannah Hall. It was great to be back in person after so long a hiatus.

Highlights of the event:

Presentations by:

Julie Dickson with Southeast Paper Group

Lucy Pereira with APCO

Dr. Charles Marshall with US Dept of Housing and Urban Development

Panel Discussion with FM Professionals

Multiple encounters with Zoo wildlife



# Atlanta Workplace 2022 8.19.22



Location: Zoo Atlanta-Savannah Hall

2022 Awards were also awarded

- Distinguished Member of the year-Trent Patterson
- Martha Osborne CFM award-Lyle D Gladney
- Achievement in FM- Machelle Clarke
- Associate Member of the Year-Morgan Cohen





# Atlanta Workplace 2023 3.3.23

Location: The Loudermilk Center

AWP returned to the Loudermilk Center for 2023.

Presentations by:

Stan Hall with the Gas South District  
Machelle Clark with State Farm  
Raymond LLC  
Fortress Consulting



# Education al Training- June



Building Information System  
& Task Automation  
June 14, 2023

Hosted & Sponsored by  
QmodoAI

Location: Governor's Gun  
Club, Kennesaw, GA



Fire Safety Tips for  
Building Operators  
June 28, 2023

Speaker: Rock Toler- Cobb  
County Deputy Fire  
Marshal  
Location: Cobb County  
Safety Village



# Young Professionals



Tour Insight Global

# Tours TKE/ King & Spaulding



TKE Tower

8.26.22



King & Spalding

9.23.22



# Tours - ASHRAE Headquarters/ Mercedes Benz



ASHRAE Headquarters

3.31.23



Mercedes Benz

5.19.23

# New Member Orientation/State Farm Tour 10.12.22





# Fall Classic 5.18.22



Chateau Elan





# Spring Classic 4.21.23

Chataeau Elan



# Board Meeting Hosts

Special Thanks to the following for Hosting Ifma Executive Board Meetings

Raymond LLC- July 2022  
Security Solutions of America-August 2022  
IST Management Services Inc-September 2022  
Empire Office, Inc.-October 2022  
Vari-November 2022  
Humphries and Company-January 2023  
OFS-February 2023  
BCJ Building Services-March 2023  
1 Electric-April 2023  
Suddath-May 2023  
Morley-June 2023

# FINANCIALS

Income		
Business Partner Program		72,566.56
Spring Classic		
Fund Raiser		11,550.00
Registration		10,840.00
<b>Total Spring Classic</b>		<b>22,390.00</b>
IFMA Atlanta Workplace		1,300.00
Professional Development		
CFM Course		505.00
Tours		3,165.00
<b>Total Professional Development</b>		<b>3,670.00</b>
Associates & Events		2,305.00
Fund Raisers		
Other Fund Raiser		33,152.96
<b>Total Fund Raisers</b>		<b>33,152.96</b>
Chapter Dues		48,710.54
Registration Fees - Luncheons		19,290.00
Holiday Awards Banquet		5,590.00
Interest Earned		47.29
<b>Total Income</b>		<b>209,022.35</b>

Expense		
Business Partner Reception		2,281.42
Administrative Expense		
Administrative Fees		76,000.00
Bank Charge/CC Fees		3,008.76
Name Tags		42.50
Postage		36.26
Survey Monkey		288.00
Presidents Fund		597.59
<b>Total Administrative Expense</b>		<b>79,973.11</b>
Other Fund Raiser		42,578.55
Spring Classic.		20,630.41
Professional Development.		
Speaker T&E		500.00
Audio Visual		53.00
Educational Seminars		
Educational Seminars/CFM		1,146.32
IACET Annual Fee & Training		3,960.00
<b>Total Educational Seminars</b>		<b>5,106.32</b>
<b>Total Professional Development.</b>		<b>5,659.32</b>
Holiday Awards Banquet.		
Venue and Catering		3,636.52
Trophies		948.70
<b>Total Holiday Awards Banquet.</b>		<b>10,585.22</b>
Meal Service		26,260.56
Board Meeting		201.16
Advocacy Day		2,475.06
Associates.		
Associates Events		7,768.22
<b>Total Associates.</b>		<b>7,768.22</b>
World Workplace		
Hospitality Suite & Food & Bev		3,766.64
<b>Total World Workplace</b>		<b>3,766.64</b>
Accredited Degree Program - ADP		1,200.00
IFMA Foundation Contributions		
IFMA Foundation Scholarship		3,000.00
WWP Expenses/Scholarship Win		2,000.00
<b>Total IFMA Foundation Contributions</b>		<b>5,000.00</b>
Sponsorships		
IFMA Atl Prof Scholarship WWP		4,930.58
<b>Total Sponsorships</b>		<b>4,930.58</b>
Communications		
Media & Public Relations		6,000.00
Website		
Website Dev & Maint		2,522.40
<b>Total Website</b>		<b>2,522.40</b>
<b>Total Communications</b>		<b>8,522.40</b>
<b>Total Expense</b>		<b>221,832.65</b>
<b>Net Income</b>		<b>-12,810.30</b>



THANK YOU