

# IFMA ATLANTA ANNUAL REPORT

2019-2020





# TABLE OF CONTENTS

- Mission, Purpose, & Objectives
- President's Bio
- Officers & Committee Chairs
- Sustaining Patrons
- Business Partners
- Balanced Score Card
- Newsletters
- Financials



# MISSION, PURPOSE, & OBJECTIVES

## **Mission**

The Atlanta Chapter of IFMA is the premier, focused resource for professional development and innovative solutions in strategic Facility Management.

## **Purpose**

To support a community that fosters vitality, momentum and impact for the facility management professional and associate members

## **Objectives**

- Provide and engage Chapter members with opportunities that expand their professional growth, build business relationships, and advance their career paths
- Inspire passion for the facility management profession that compels and engages facility practitioners to join and participate in the IFMA network, offers unique value with that participation, and attracts volunteer leaders
- Sustain Atlanta Chapter of IFMA's financial integrity

# PRESIDENT'S BIO – CHAPTER PRESIDENT, 2019-2020

John Means works as the Director, Facilities Management for Hartsfield-Jackson Atlanta International Airport. His mission is to act in the best interest of the Landlord (City of Atlanta/ATL) to insure that ATL's buildings remain safe and code compliant with systems that are constantly reliable. His team consists of six professionally trained facility managers that continually inspect and assess the airport for deficiencies and test critical components like emergency generators for example to ensure they perform when called upon.

John and his team work with tenants, concessionaires, AATC and the Airlines to insure our rented spaces consistently meet the demands of our customers. They also work with engineering, maintenance, construction and sustainability to improve future designs and mitigate deficiencies within the current "built" environment. They perform these tasks while keeping an eye out for potential improvements in energy efficiency and sustainability. "Facilities Management recognizes it's impossible to remain the most efficient airport in the world without having a supporting infrastructure that's reliable and fully operable." As we learned very clearly last December 17th it's hard to get planes off the ground if you don't have power feeding the numerous systems that make this happen.

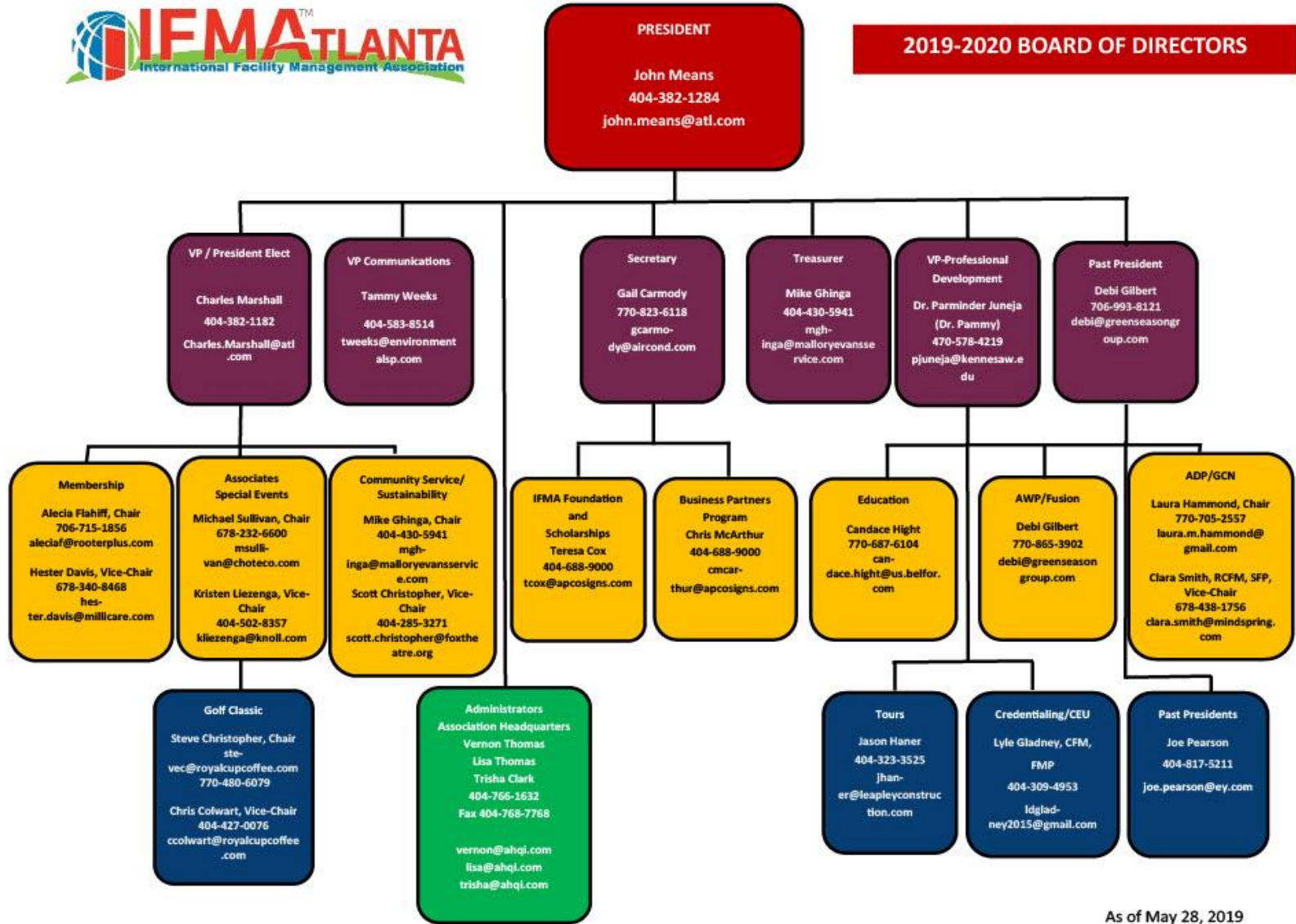
"Our job is to anticipate where our systems are showing wear and tear and proactively correct our issues before they result in unscheduled downtime and the resulting losses of revenues and consumer confidence." Over 104 Million passengers per year depend on ATL's facilities to work as designed. That enables them to move to their flights without delay.







**2019-2020 BOARD OF DIRECTORS**



As of May 28, 2019

# 2019-2020 BUSINESS PARTNERS

PLATINUM



GOLD



Silver



BRONZE



PATRONS

1electric

AOLI

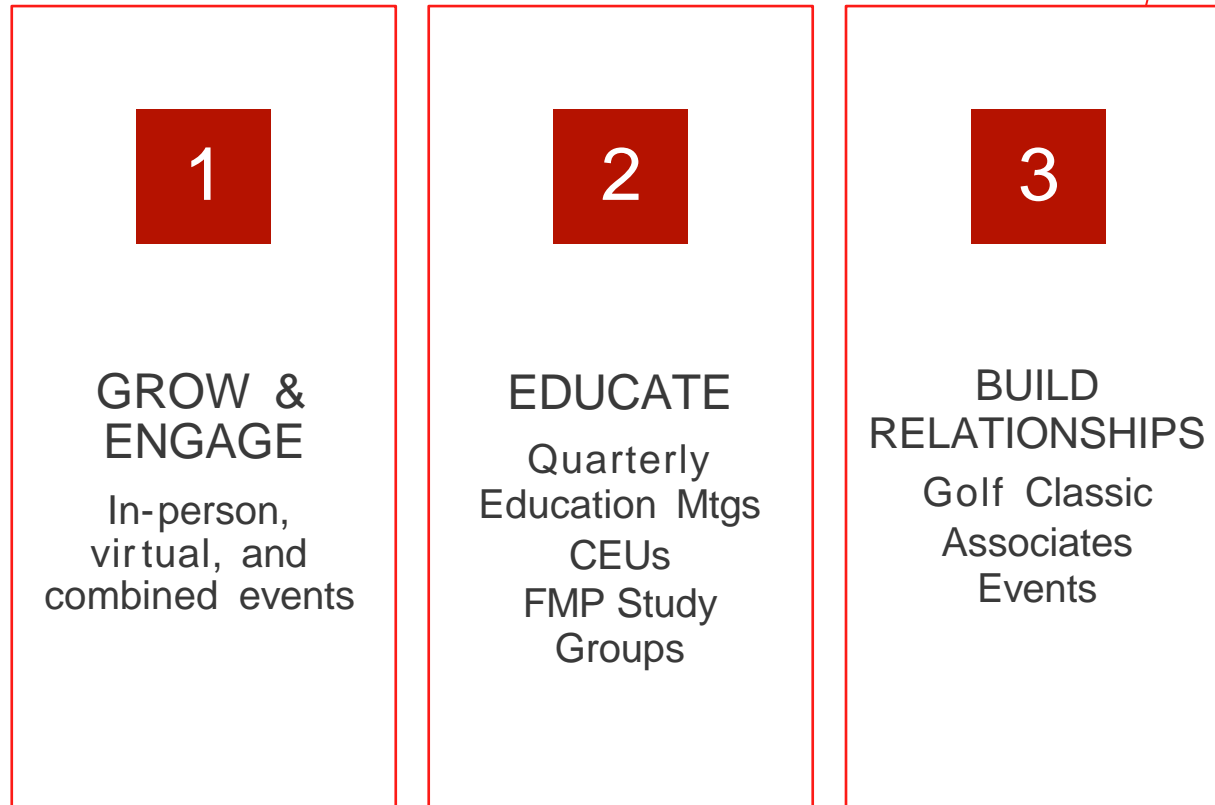
EMCOR Services - Aircond

Environmental Service Partners, LLC

Maxair Mechanical, Inc.

# BALANCED SCORECARD

Each year the IFMA Atlanta Chapter Board updates its *balanced scorecard*. The scorecard contains seven objectives that provide purpose and accountability for the organization.



# BALANCED SCORECARD, ctd.

4

**COLLABORATE**  
Georgia Tech  
Kennesaw State  
Facilithon  
CEFGA/Skills  
USA

5

**FACILITATE**  
New Members  
Meetings  
FM Tours

6

**DEVELOP  
LEADERS**  
Young  
Professionals

7

**MAINTAIN  
FISCAL  
VIABILITY**  
Business  
Partners  
Program





## NEWSLETTERS – CLICK ON THE LINKS BELOW

[July 2019](#)

[August 2019](#)

[September 2019](#)

[October 2019](#)

[November 2019](#)

[December 2019](#)

[January 2020](#)

[February 2020](#)

[March 2020](#)

[April 2020](#)

[May 2020](#)

[June 2020](#)

# FINANCIALS

	Jul '19 - Jun 20
<b>Income</b>	
Business Partner Program	100,049.96
Spring Classic	
Fund Raiser	2,380.52
Registration	0.00
<b>Total Spring Classic</b>	<b>2,380.52</b>
IFMA Atlanta Workplace	13,811.00
Professional Development	
Tours	1,505.00
<b>Total Professional Development</b>	<b>1,505.00</b>
Associates & Events	2,080.00
Chapter Dues	42,767.74
Registration Fees - Luncheons	11,370.00
Holiday Awards Banquet	3,920.00
Interest Earned	37.47
<b>Total Income</b>	<b>177,921.69</b>
<b>Expense</b>	

Business Partner Expense	3,787.87
Administrative Expense	
Administrative Fees	75,888.88
Bank Charge/FCC Fees	2,588.24
Postage	52.88
Printing	259.41
Security Meeting	335.88
Presidents Fund	249.88
<b>Total Administrative Expense</b>	<b>79,454.65</b>
Facility Costs	685.48
Spring Classic	1,345.88
IFMA Atlanta Workplace	38,749.38
Holiday Awards Banquet	
Travel and Catering	5,581.85
Trophies	1,258.51
<b>Total Holiday Awards Banquet</b>	<b>7,358.47</b>
Meal Seminar	5,184.85
Board Meeting	3,249.51
Advisory Day	1,354.88
Associates	
Associates Events	2,355.85
<b>Total Associates</b>	<b>2,355.85</b>
World Workplace	
Hospitality Suite & Food & Bev	4,344.77
WMP Chapter Pin	449.35
<b>Total World Workplace</b>	<b>5,825.12</b>
Community Services	
Volunteer Day	52.81
<b>Total Community Services</b>	<b>52.81</b>
Accredited Degree Program - ADP	1,587.25
ADP Contributions	
ESB IFMA Program	7,588.88
CA Track	7,588.88
<b>Total ADP Contributions</b>	<b>15,888.88</b>
IFMA Foundation Contributions	
IFMA Foundation Donation	492.85
IFMA Foundation Scholarship	1,588.88
WMP Expense/Scholarship Winner	2,888.88
<b>Total IFMA Foundation Contributions</b>	<b>3,652.85</b>
Sponsorships	
IFMA All Prof Scholarship WMP/ES	4,252.95
<b>Total Sponsorships</b>	<b>4,252.95</b>
Communications	
Media & Public Relations	5,888.88
Website	
Website Dev & Maint	1,728.51
<b>Total Website</b>	<b>1,728.51</b>
<b>Total Communications</b>	<b>7,728.51</b>
<b>Total Expense</b>	<b>176,858.51</b>
<b>Net Income</b>	<b>1,063.18</b>

THANK YOU