



# 2020 Scholarship Event

# Welcome



IFMA  
FOUNDATION  
MAKING FM A CAREER OF CHOICE





**Armando Rodriguez, President/CEO**  
A&A Elevated Facility Solutions



Thank you to our event sponsor



Thank you to our web host



Built Environment  
Technology Alliance



## IFMA Foundation Scholarship Sponsors 2020

**THANK YOU** for igniting the future of FM!

Atlanta Chapter of IFMA  
Chesapeake Chapter of IFMA  
Dallas/Forth Worth Chapter of IFMA  
Delaware Chapter of IFMA  
Denver Chapter of IFMA  
Eastern Iowa Chapter of IFMA  
Greater Philadelphia Chapter of IFMA  
Greater Triangle Chapter of IFMA  
Hong Kong Chapter of IFMA  
Houston Chapter of IFMA

IFMA Airport Facilities Council  
IFMA City & Country Clubs Council  
IFMA Fellows  
Kansas City Chapter of IFMA  
New York City Chapter of IFMA  
San Diego Chapter of IFMA  
Seattle Chapter of IFMA  
Southeast Wisconsin Chapter of IFMA  
West Michigan Chapter of IFMA



**Tony Piucci**, Senior Vice President  
ABM Industries



A message from ABM



# IFMA<sup>TM</sup> Atlanta Chapter

International Facility Management Association



# 2020 IFMA Atlanta Chapter Scholarship

## Sungil Hong

**Georgia  
Tech**



IFMA  
FOUNDATION  
MAKING FM A CAREER OF CHOICE





**IFMA**<sup>TM</sup>

**Chesapeake  
Chapter**

International Facility Management Association





# 2020 Chesapeake Chapter Scholarship

# Doug Postema





**IFMA**<sup>TM</sup>

International Facility Management Association

# Dallas/Ft. Worth Metroplex Chapter



# 2020 Dallas/Fort Worth Chapter Scholarship

## Kathryn Moore



**TEXAS A&M**  
UNIVERSITY®





# IFMA<sup>TM</sup> Delaware Chapter

International Facility Management Association



# 2020 Delaware Chapter Scholarship

**Matheus Cruz De Oliveira**





**Dean Stanberry, CFM, LEED AP**  
IFMA 2<sup>nd</sup> Vice Chair





**Eric Teicholz, IFMA Fellow**







# Ishah Ahumada





# Mike Mafa



**IFMA**<sup>TM</sup>

International Facility Management Association

Empowering Facility Professionals Worldwide



**IFMA  
FOUNDATION**  
MAKING FM A CAREER OF CHOICE



# DeMarcus Means





**Irene Thomas Johnson, CFM**  
Executive Director, JLL  
IFMA Foundation Trustee



A message from JLL



**IFMA**<sup>TM</sup>

**Denver  
Chapter**

International Facility Management Association

# Pat Harris Memorial Scholarship



# 2020 Pat Harris Memorial Scholarship

# DeMarcus Means

FLORIDA **A&M** UNIVERSITY



**IFMA**<sup>TM</sup>

**Eastern Iowa  
Chapter**

International Facility Management Association





# 2020 Eastern Iowa Chapter Scholarship

## Erika Schroeder

**Kirkwood**  
COMMUNITY COLLEGE





**IFMA<sup>TM</sup>**

International Facility Management Association

# Greater Philadelphia Chapter



# 2020 Greater Philadelphia Chapter Scholarship

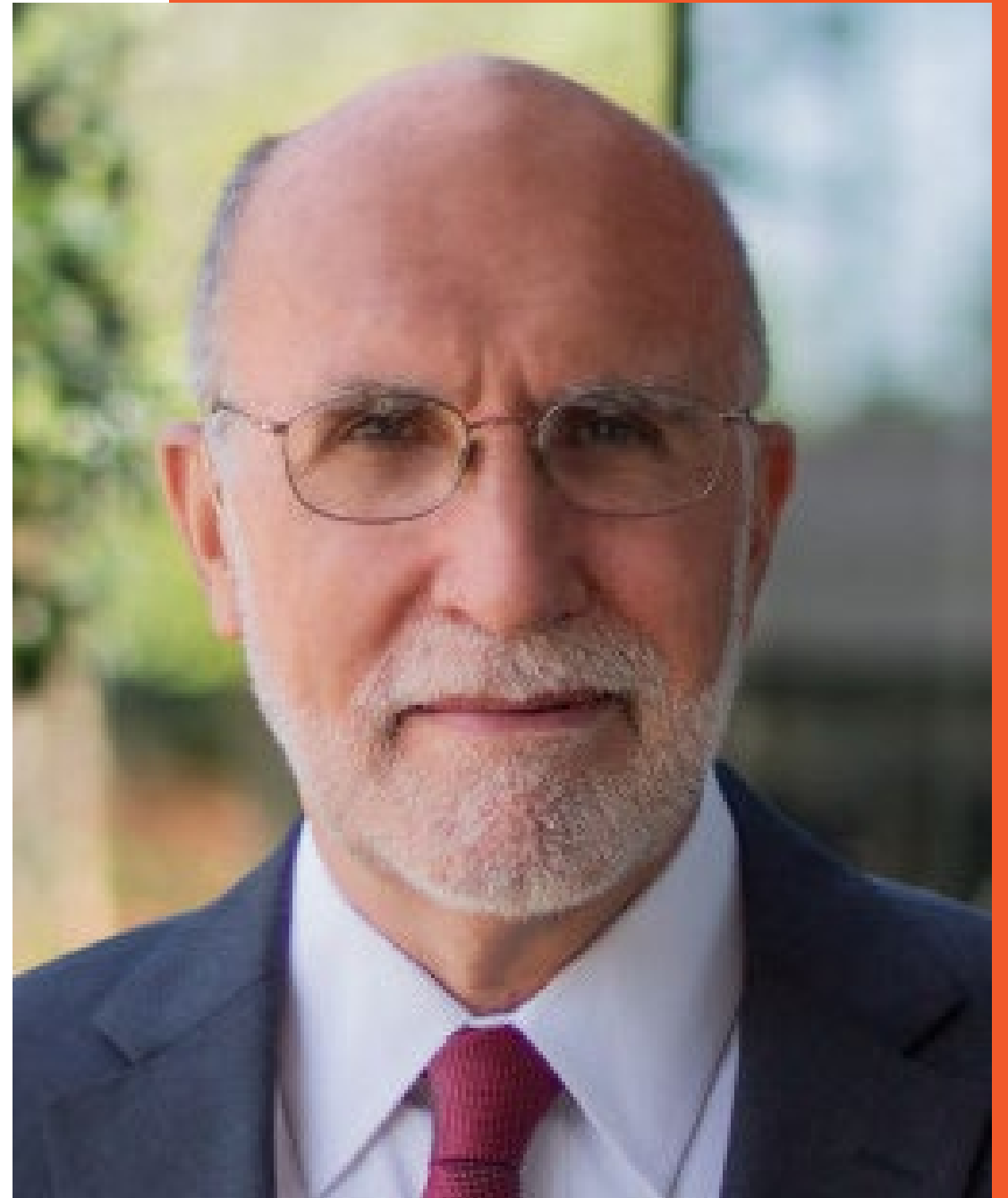
## Xiu Hong E Ng





**Michael Schley, IFMA Fellow**

Founder & Board Member, FM:Systems  
Former Chair, IFMA Foundation





**Ignite**  **FM**

## Join us at the IgniteFM! Student Competition

Friday, November 13th  
10:00 - 11:00AM Central

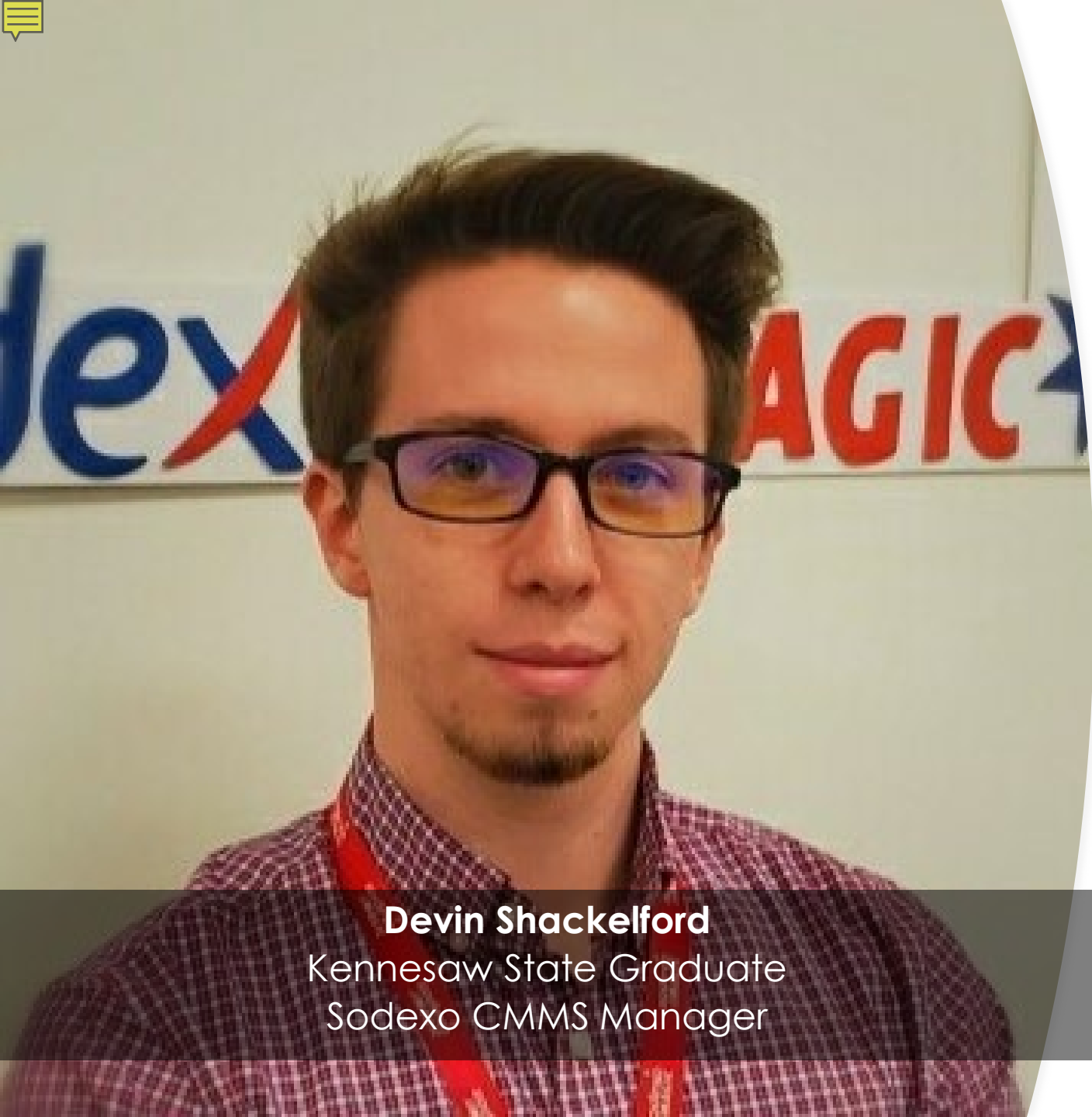
[https://foundation.ifma.org/event/  
ignitefm-student-challenge-2020/](https://foundation.ifma.org/event/ignitefm-student-challenge-2020/)



**IFMA  
FOUNDATION**  
MAKING FM A CAREER OF CHOICE

IgniteFM! Student  
Competition sponsored by





**Devin Shackelford**  
Kennesaw State Graduate  
Sodexo CMMS Manager

---

## Meet Devin Shackelford – From IgniteFM! to Sodexo Manager

---

**“Had it not been for the IFMA Foundation Scholarship program and Ignite FM! Student Challenge at IFMA World Workplace, I would not have the job that I have today at Sodexo.**

**Fortunately, the Sodexo judges were impressed with my skills and abilities and offered me a position** as an operations support specialist for their Walgreens portfolio. I’m excited to be managing their computerized maintenance management system.”

*2018 IFMA Greater Triangle Chapter Scholarship*



**Angela Johnson**

NORAM Vice President of FM Service Development  
IFMA Foundation Trustee



A message from Sodexo



**IFMA**<sup>TM</sup>

International Facility Management Association

**Greater Triangle  
Chapter**

# **Buck Fisher IFMA Foundation Scholarship**





# 2020 Buck Fisher IFMA Foundation Scholarship

## Dipin Kasana







# 2020 Buck Fisher IFMA Foundation Scholarship

## George Poulos



VIRTUAL CHARITY AUCTION

# START YOUR HOLIDAY SHOPPING EARLY!

Proceeds support the mission and vision of the



Starts: Thursday, November 12, 2020 @ 6:00 AM CST

Ends: Sunday, November 15, 2020 @5:00 PM CST

[YourCharityAuction.com/ifmafoundation](https://YourCharityAuction.com/ifmafoundation)



# IFMA<sup>TM</sup> Hong Kong Chapter

International Facility Management Association



# 2020 Hong Kong Chapter Scholarship Ashley Leung



THE HONG KONG  
POLYTECHNIC UNIVERSITY  
香港理工大學





## A message from IFMA Chapter & Community

**Ted Ritter, IFMA Fellow**  
IFMA Phoenix Chapter  
IFMA IT Community & BETA



# Small IFMA chapter support recognition

**Irene Thomas Johnson**  
Executive Director, JLL  
IFMA Foundation Trustee  
IFMA San Fernando Chapter President

# Thank You Event & Auction Donors!

## **IFMA Community**

Central Ohio Chapter of IFMA  
Chicago Chapter of IFMA  
IFMA Espana (IFMA Spanish Chapter)  
IFMA Fellows  
Kansas City Chapter of IFMA  
Lehigh Valley Chapter of IFMA  
Madison Chapter of IFMA  
New Jersey Chapter of IFMA  
Northeastern Wisconsin Chapter of IFMA  
Sacramento Valley Chapter of IFMA  
San Fernando Valley Chapter of IFMA  
West Michigan Chapter of IFMA

## **Companies/Individuals**

Advanced Filtration Concepts. Inc.  
Air Filter Plus  
C-K Control Temp. Inc & BRAVO! Group Services  
ClearTech  
Crandall Office Furniture  
GROW Organization  
Hong Kong Chapter of IFMA  
Jeffrey Hollington  
Jellets Family  
Kenneth Scott  
Prof. Edward D Re Jr.  
Steelcase, Inc.



**IFMA**<sup>TM</sup>

**Houston  
Chapter**

International Facility Management Association

# George Graves Memorial Endowed Scholarship





# 2020 George Graves Memorial Scholarship

## Cailyn Poschner



**CONESTOGA**  
Connect Life and Learning



**IFMA**<sup>TM</sup> **Houston**  
**Chapter**  
International Facility Management Association

# Doug Underwood Memorial Endowed Scholarship



# 2020 Doug Underwood Memorial Scholarship

## Jeffrey Feghaly





# IFMA<sup>TM</sup> Airport Facilities Council

International Facility Management Association



# 2020 Airport Facilities Council Scholarship

# Ola Adam



**CONESTOGA**  
Connect Life and Learning





# 2020 Airport Facilities Council Scholarship

## Trent Warren



CAL STATE  
**EAST BAY**



# IFMA<sup>TM</sup> City & Country Clubs Council

International Facility Management Association



# 2020 City & Country Clubs Council Scholarship

## Paul Schmitter







**Peter Ankerstjerne, IFMA Fellow**  
IFMA Global Chair



**Case Runolfson, CFM**  
IFMA Foundation 2<sup>nd</sup> Vice Chair



Undergraduate Degree  
| Netherlands



Undergraduate Degree  
| USA



Undergraduate Degree  
| Canada



Undergraduate Degree  
| USA



Undergraduate & Graduate  
Degree | USA



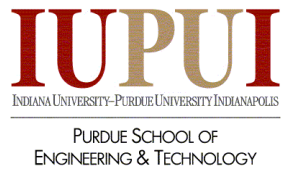
Graduate Degree  
| USA



Undergraduate Degree  
| Netherlands



Graduate Degree  
| Hong Kong



Graduate Degree  
| USA



Undergraduate Degree  
| USA



Undergraduate Degree  
| South Korea



Associate Degree  
| Singapore



Graduate Degree  
| USA



Associates Degree  
| Singapore



Undergraduate Degree  
| USA



Undergraduate Degree  
| USA

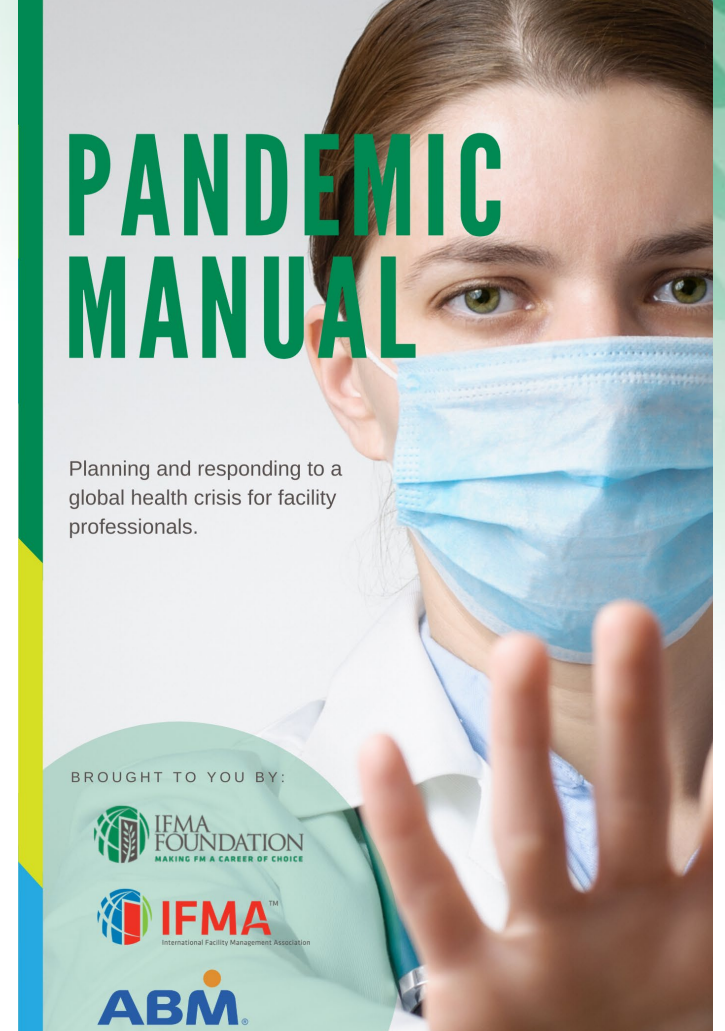
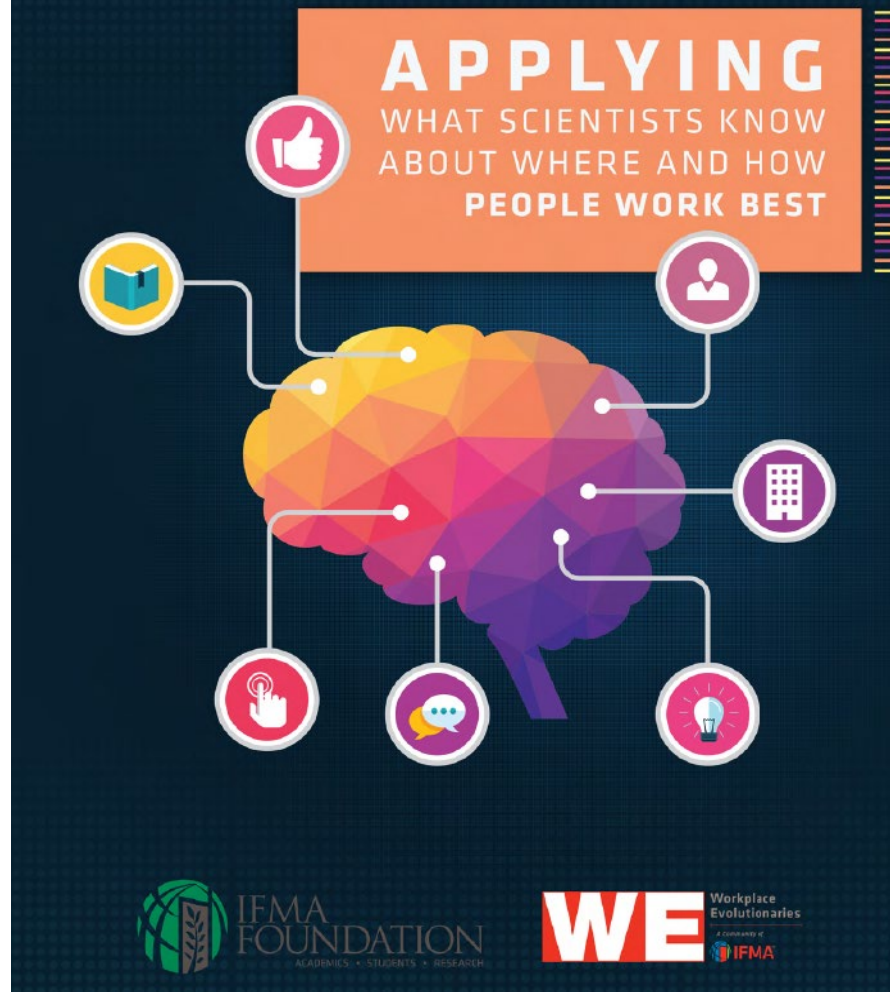


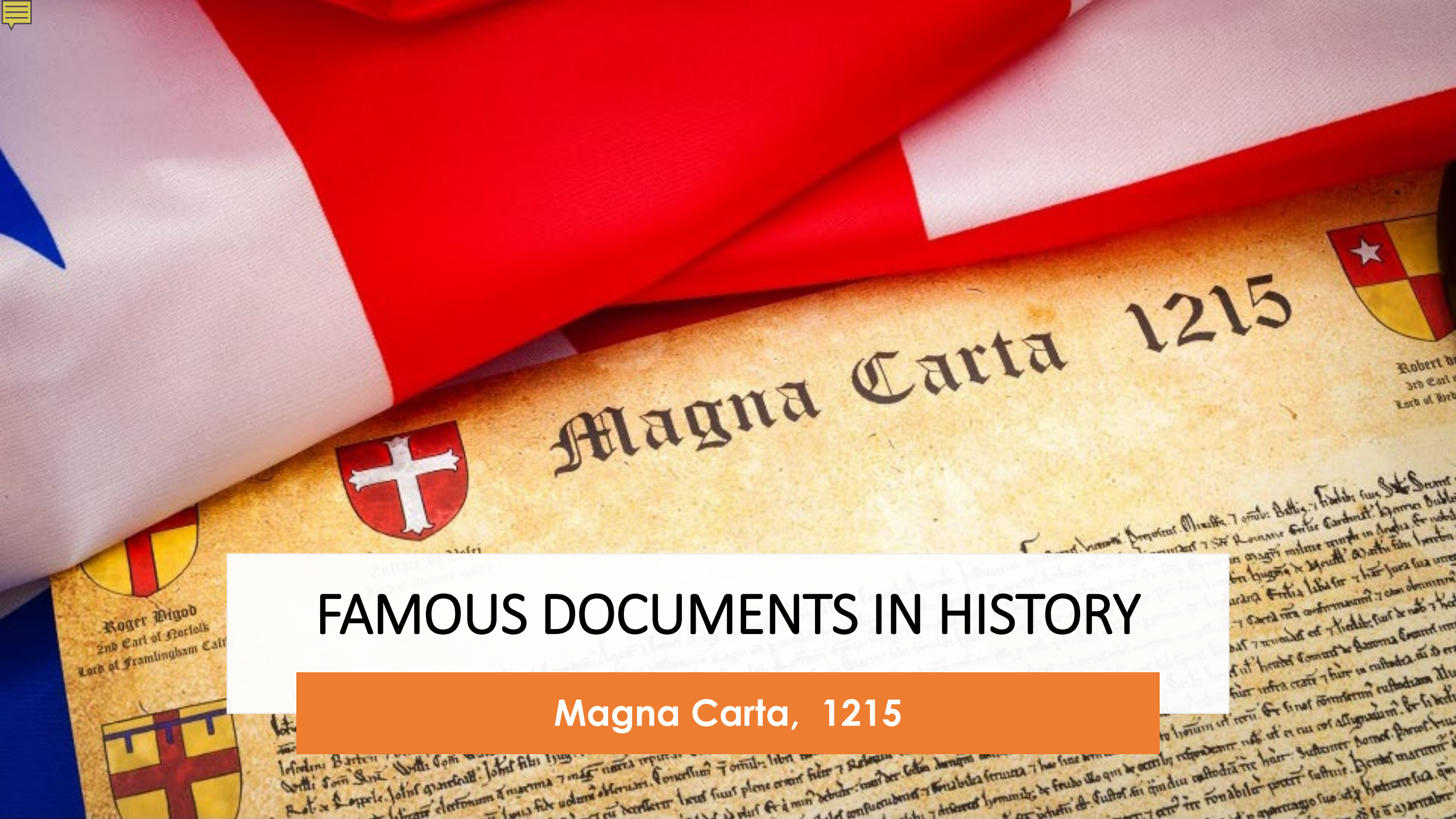
Undergraduate  
Degree | Sri Lanka



## Regina Ford Cahill

Pratt Institute-Chair, Construction Mgmt, FM, Real Estate Practice,  
IFMA Foundation Trustee, Chair, Academic Affairs Committee & Facility Management  
Accreditation Commission (FMAC)





# FAMOUS DOCUMENTS IN HISTORY

Magna Carta, 1215

these usurpations, which, would inevitably interrupt our connections and correspondence. They  
in the necessity, which denounces our Separation, and hold them, as we hold the rest of mankind  
of the United States of America, in General Congress, Assembled, appealing to the  
good People of these Colonies, solemnly publish and declare, That these United Colonies are,  
in obedience to the British Crown, and that all political connection between them and the State of Great  
Britain have full Power to levy War, conclude Peace, contract Alliances, establish Commerce, and to do all  
the support of this Declaration, with a firm reliance on the protection of divine Providence, we

John Hancock

Wm Hooper  
Joseph Hewes,  
John Penn

Robt Morris  
Benjamin Rush

# FAMOUS DOCUMENTS IN HISTORY

Declaration of Independence, 1776

Edward Rutledge

Samuel Smith

# THE TREATY OF PEACE

BETWEEN

THE ALLIED AND ASSOCIATED POWERS

AND

GERMANY,

The Protocol annexed thereto, the Agreement respecting the military occupation of the territories of the Rhine,

AND THE

TREATY

BETWEEN

FRANCE AND GREAT BRITAIN

RESPECTING

Assistance to

Signed

[With Maps



## FAMOUS DOCUMENTS IN HISTORY

Treaty of Versailles, 1919



# The State of Texas

SECRETARY OF STATE

CERTIFICATE OF INCORPORATION

OF

IFMA FOUNDATION  
CHARTER #1159755

The undersigned, as Secretary of State of the State of Texas, hereby certifies that Articles of Incorporation for the above corporation duly signed pursuant to the provisions of the Texas Statutes and are on file in this office and are received in this office.

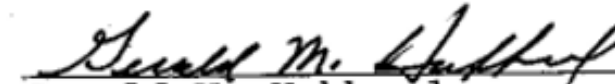
ACCORDINGLY, the undersigned, by the authority vested in the Secretary of State by the Texas Statutes, has caused this Certificate of Incorporation and attaches hereto


RESOLVED FURTHER, that the proper officers of the Corporation are hereby authorized and directed to execute in the name and on behalf of the Corporation to carry out and all acts and things, execute any instrument or documents, and incur any expenses which may become necessary, desirable or proper to carry out and put into effect and make operative any portions of the foregoing resolutions.

Dated June 22, 1990, effective July 12,

TRUSTEES:

  
Edmond P. Rondeau

  
Gerald M. Hubbard

  
Dennis L. Longworth

## FAMOUS DOCUMENTS IN HISTORY

IFMA Foundation Articles of Incorporation, 1990

Ed Rondeau, AIA,  
RCFM, IFMA Fellow



Current member,  
IFMA Foundation FMAC



IFMA Chair 1988

IFMA Foundation Chair 1990



IFMA 30<sup>th</sup> Anniversary  
FOUNDATION  
MAKING FM A CAREER OF CHOICE



# HALL OF FAME

## Past Chairs

### 1990-2009

Ed Rondeau, IFMA Fellow

Jerald Hubbard, IFMA Fellow

Maury Keiser, IFMA Fellow

Phyllis Meng, CFM, CFMJ, IFMA Fellow

Marc K Adelman, CFM, AIA, CCS

William (Bill) Hoffman, CFM

Victoria Hardy, CFM

Audrey Kaplan

Sam Davidson, CFM, CFMJ

Francis J. Kuhn, CFM, CFMJ, IFMA Fellow

Peggy McCarthy, CFM, IFMA Fellow

### 2010-2020

Melissa Van Hagen, IFMA Fellow

Pat Turnbull, IFMA Fellow

Stephen Ballesty, IFMA Fellow

Roger Peterson

Jennifer Corbett-Shramo, IFMA Fellow

Diane Coles Levine, IFMA Fellow

John Carrillo, IFMA Fellow

Kent Miller

Michael Schley, IFMA Fellow

Nancy Sanquist, IFMA Fellow

Joe Archie





# 2020 IFMA Fellows Scholarship

## Yujin Kim

**Georgia  
Tech**



**IFMA  
FOUNDATION**  
MAKING FM A CAREER OF CHOICE



# IFMA<sup>TM</sup> Kansas City Chapter

International Facility Management Association



# 2020 Kansas City Chapter Scholarship

## Emma Leary





**IFMA**<sup>TM</sup>

International Facility Management Association

**New York City  
Chapter**

# Worthy FM Memorial Scholarship



# 2020 New York City Worthy FM Memorial Scholarship

## David Lawson

# Pratt



**IFMA**<sup>TM</sup>

International Facility Management Association

**San Diego  
Chapter**

# James Gonsalves Memorial Scholarship





# 2020 IFMA James Gonsalves Memorial Scholarship

## Gabriel Gamez





**IFMA**<sup>TM</sup>

**Seattle  
Chapter**

International Facility Management Association





# 2020 IFMA Seattle Chapter Scholarship

## Andrew Steele

**W**

UNIVERSITY *of* WASHINGTON





**IFMA**<sup>TM</sup>

International Facility Management Association

**Southeastern  
Wisconsin Chapter**

# Ken Laga Memorial Scholarship



# 2020 Ken Laga Memorial Scholarship

## Ana Morris



**PRINCETON  
UNIVERSITY**



**IFMA**<sup>TM</sup>

International Facility Management Association

**West Michigan  
Chapter**

# Jim Hickey Memorial Scholarship



SAGE  STUDIOS

# 2020 Ken Laga Memorial Scholarship

# Tyler Kleinsasser





**Samson Lee**  
IFMA Foundation Trustee  
Chair, IFMA Asian Advisory Board



# New FM Accredited Degree Programs in Asia



**NGEE ANN**  
POLYTECHNIC

Ngee Ann Polytechnic, Singapore  
*Diploma in Hotel & Leisure Facilities  
Management*



University of Moratuwa, Sri Lanka  
*BSc (Hons) Facilities Management*



**Derek Bacigal, CHFE**  
President, IFMA Young  
Professionals Group

IFMA Young  
Professionals

1-Year FREE  
Membership

For ADP  
Graduates

**FMG**

**FACILITY MANAGEMENT  
GRADUATE**



Accredited FM Degree



**IFMA**<sup>TM</sup>



# THE TECHNICAL DIFFICULTIES



# IFMA Foundation Board of Trustees



Chair  
Joe Archie



Vice Chair  
Bob Dills



Secretary/Treasurer  
Case Runolfson



Past Chair  
Nancy J. Sanquist



IFMA CEO  
Don Gilpin



IFMA 2<sup>nd</sup> Vice  
Chair  
Dean Stanberry



Foundation Trustee –  
Regina Ford Cahill



Foundation Trustee  
Christie Jellets



Foundation Trustee  
Angela Johnson



Foundation Trustee –  
Samson Lee



Foundation Trustee –  
Alexi Marmot



Foundation Trustee –  
Deborah Rowland



Foundation Trustee –  
Andrea Sanchez



Foundation Trustee  
Carlos Santamaria



Foundation Trustee  
Irene Thomas  
Johnson



Foundation Trustee  
Pat Turnbull

# Thank You Event Committee!



Christy Jellets, Chair



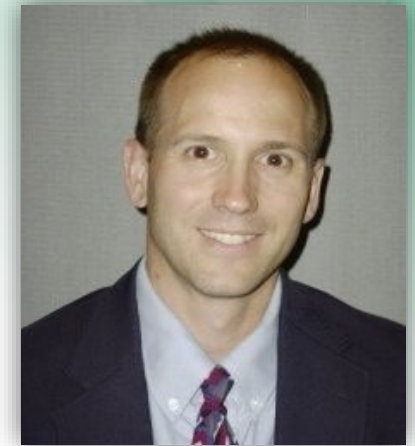
Irene Thomas Johnson



Sam Davidson



John Carey



Jim Corby



Joshua Gillespie



Leyliana Greer



Pat Turnbull



Alex Duggan

# MEET THE 2020 STUDENT SCHOLARSHIP RECIPIENTS



**Ola Adam**  
Conestoga College



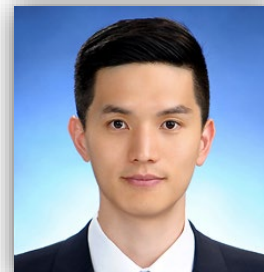
**Matheus Cruz De Oliveira**  
Temple University



**Jeffrey Feghaly**  
Arizona State University



**Gabriel Gamez**  
Chaffey College



**Sungil Hong**  
Georgia Tech



**Dipin Kasana**  
Univ North Carolina



**Yujin Kim**  
Georgia Tech



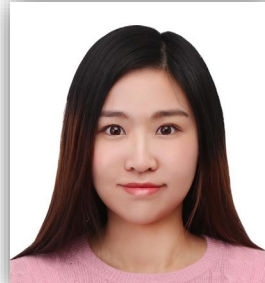
**Tyler Kleinsasser**  
South Dakota School of  
Mines & Technology



**David Lawson**  
Pratt Institute



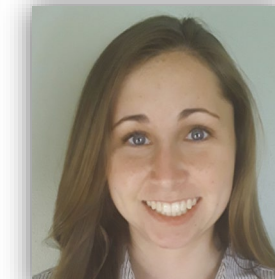
**Emma Leary**  
Ferris State University



**Ashley Leung**  
Hong Kong Polytechnic



**DeMarcus Means**  
Florida A&M University



**Kathryn Moore**  
Texas A&M University



**Ana Morris**  
Princeton University



**Xiu Hong Ng**  
Temple University



**Cailyn Poschner**  
Conestoga College



**George Poulos**  
Univ North Carolina



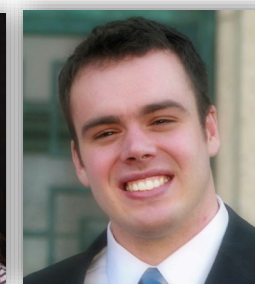
**Doug Postema**  
Ferris State Univ



**Paul Schmitter**  
Liverpool John  
Moores Univ



**Erika Schroeder**  
Kirkwood Community  
College



**Andrew Steele**  
Univ of Washington



**Trent Warren**  
California State Univ-  
East Bay

## IFMA Foundation Scholarship Sponsors 2020

**THANK YOU** for igniting the future of FM!

Atlanta Chapter of IFMA  
Chesapeake Chapter of IFMA  
Dallas/Forth Worth Chapter of IFMA  
Delaware Chapter of IFMA  
Denver Chapter of IFMA  
Eastern Iowa Chapter of IFMA  
Greater Philadelphia Chapter of IFMA  
Greater Triangle Chapter of IFMA  
Hong Kong Chapter of IFMA  
Houston Chapter of IFMA

IFMA Airport Facilities Council  
IFMA City & Country Clubs Council  
IFMA Fellows  
Kansas City Chapter of IFMA  
New York City Chapter of IFMA  
San Diego Chapter of IFMA  
Seattle Chapter of IFMA  
Southeast Wisconsin Chapter of IFMA  
West Michigan Chapter of IFMA



VIRTUAL CHARITY AUCTION

# START YOUR HOLIDAY SHOPPING EARLY!

Proceeds support the mission and vision of the



Starts: Thursday, November 12, 2020 @ 6:00 AM CST

Ends: Sunday, November 15, 2020 @5:00 PM CST

[YourCharityAuction.com/ifmafoundation](https://YourCharityAuction.com/ifmafoundation)



**Ignite**  **FM**

## Join us at the IgniteFM! Student Competition

Friday, November 13th  
10:00 - 11:00AM Central

[https://foundation.ifma.org/event/  
ignitefm-student-challenge-2020/](https://foundation.ifma.org/event/ignitefm-student-challenge-2020/)



**IFMA  
FOUNDATION**  
MAKING FM A CAREER OF CHOICE

IgniteFM! Student  
Competition sponsored by





If you are going to live,  
leave a legacy  
Make a mark on the world  
that can't be erased.

- Maya Angelou



IFMA  
FOUNDATION  
MAKING FM A CAREER OF CHOICE



**IFMA** | **WORLD  
WORKPLACE®**

**BUILDING THE FUTURE**  
BUILT ENVIRONMENT | SUSTAINABILITY | HUMAN EXPERIENCE

*Virtual  
Experience*

➤ **Dec. 9-10, 2020**





THANK YOU  
for making a  
difference

---



IFMA  
FOUNDATION  
MAKING FM A CAREER OF CHOICE