

International Facility Management Association



IFMA Atlanta Chapter * 1185 Willingham Drive * Atlanta, Georgia 30344 * November 1999 Issue

1999 Executive Board

President: Matt Dawson
Ernst & Young LLP

Vice President: Joyce Roper
Coca-Cola Enterprises Inc.

Treasurer: Dave Flory
Cort Furniture Rental

Secretary: Kathy Farley
King & Spalding

Past President: Sheryl Yetsko
Long Aldridge & Norman LLP

1999 Sustaining Patrons

AirCond
Bonitz Flooring Group, Inc.
Carithers, Wallace & Courtenay
Choate Construction Company
Contract Marketing
Cort Furniture Rental
COVAN World-Wide Moving, Inc.
DeKalb Office Environments
DuPont Flooring Systems
Egan Visual Inc.
Farrington Design Group
Foster Business Interiors, Inc.
Geiger Brickel
General Building Maintenance
Gensier
Graebel Atlanta Movers, Inc.
Haworth, Inc.
Herman Miller, Inc.
Humphries and Company
Initial Contract Services, Inc.
Interface, Bentley, Prince Street
Knoll
Malone Construction Company
Mannington Commercial
Metric Constructors
Milliken & Co.
Office Pavilion
Points Services
Rite Way Service, Inc.
Royal Cup, Inc.
Shaw Contract Group
Steelcase, Inc.
Technical Industries, Inc.
Wegman Associates, Inc.

Monthly Meeting

Wednesday, November 17 ** Abbey Restaurant

Topic: Creating a Great Place to Work (Presented by: one world learning)

Time: 11:30 a.m. - 1:30 p.m.

Cost: \$25.00 Pre-registered Members
\$30.00 Facility Manager Guests

\$40.00 for non-facility managers and members w/o advance registration

Location: Abbey Restaurant, 163 Ponce De Leon Avenue, NE

Reservations: Association Office(404) 766-1632 or Fax 404-768-7767 Please contact Lisa by 4:30 p.m., Fri., Nov. 12. or your rate will be the higher.

One world learning is a dynamic coaching, learning and consulting company who helps organizations learn how to achieve sustainable performance. We are a division of Interface, Inc., a worldwide commercial interiors company, based in Atlanta, GA. Interface created one world learning in February, 1997 to fill the company's need for continuing organizational and employee development. Interface was voted one of 'Fortunes' top 100 companies to work for last year.

One world learning will share with IFMA some of techniques to create great working environments. This includes how to create workforce commitment, how to keep employees excited and motivated, and how to turn purpose into performance. Hope to see you there.

Directions:

Going I-75/85 South towards Downtown, take Exit 100; this is North Avenue. Turn left and travel 5 lights to the corner of North Avenue & Piedmont - The Abbey is immediately on the left of North Avenue & Piedmont with the entrance on Piedmont.

Going I-85 North to exit 98 - Pine Street exit. Travel towards Peachtree St/Civic Center. Merge onto Pine Street NE. Turn left onto Peachtree Street NE. Turn right onto North Avenue NE. Travel to Piedmont, The Abbey is immediately on the left hand corner of North Avenue & Piedmont with the entrance on Piedmont.

Upcoming Events:

December 15 - Award Luncheon

February 12, 2000 - CFM Exam

February 10, 2000, 8:00 am
New Membership Orientation
@ TVS

Inside This Issue:

Page 2

President's Message Member News

Page 3

Holiday Awards Luncheon

Page 4-5

World Workplace Highlights

Page 6

Meeting Recap & Associate Meeting

Page 7

Calendar of Events & Directory
Update Form

President's Message



Many Thanks to Those Who Helped With the Chapter of the Year Submission

Chapter of the Year Submission

We have bittersweet news to report this month. Our chapter did not receive the well-deserved recognition as Chapter of the Year. We lost our bid by less than six tenths of a point --0.60 %. While having some real concerns over the judging results, we fully support and congratulate our friends in the Capital Chapter on their 1999 accomplishments. The good news is that IFMA Atlanta's accomplishments and best practices were celebrated in LA by the International staff and among our peers.

In the minds of many around this country, IFMA Atlanta is the Chapter of the Year. Many thanks to Joyce Roper and her team's hard work and your individual efforts on this project. Again, congratulations to you and our Board for making IFMA Atlanta the best chapter in IFMA.

Chapter Recognition Awards

At this year's annual awards banquet, let's celebrate our chapter's accomplishments and the silent heroes within our ranks. As a reminder, the time is now to nominate chapter members for our chapter recognition awards.

Please take a moment to consider who among our well deserving members should be recognized for their individual accomplishments during 1999. We have included a nominating form along with the 2000 officer's election ballot in this newsletter. Should you have any questions regarding our awards program, please contact Sheryl Yetsko at 404.527.8332.

A Word on our Sustaining Patrons

Under Harry Ludwig's stewardship, our 2000 Sustaining Patron program drive is well underway. The program also needs your ongoing support. When one of our Sustaining Patrons may be of assistance to your company, we ask that you consider using their services and products in recognition of their continuing financial and in-kind support of IFMA Atlanta and our FM profession.

Professional Development-CFM

In November, please remember to use your IFMAnet account for more information on the CFM and the new IFMA Education Brings the Classroom to Your programs. Our IFMA on-line self-study courses are user friendly and the class offerings continue to expand. For more information, call IFMA Education at 1-713-623-4362.

Closing

Please let us hear from you! As you mark and return the enclosed officer election ballot and award nomination form, please also consider how you might be able to serve your chapter in 2000. Please contact the current committee chair directly with your level of interest and ideas on our membership services.

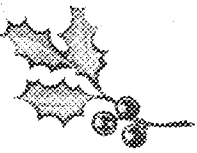
Next month, we will close our 1999 calendar year, celebrate the Holiday season, install officers and recognize the star performances of members and chapter leaders. I look forward to sharing a report card with you on our 1999 goals. Please continue to let us know how your Chapter can better serve you and our FM profession.

We look forward to seeing you on the 17th. Many thanks.

Matt Dawson
President

Member News

Sonya Tablada has been recognized as the Hispanic Businesswoman of the Year. Sonya is President and founder of Facility Resources, Inc., a facility planning consulting firm headquartered in Atlanta. She has been a professional member of IFMA for a number of years and spoke at World Work Place for the past three years. This honor was awarded by the United States Hispanic Chamber of Commerce as "Hispanic Businesswoman of the Year -Region VI". Sonya was recognized at USHCC's 20th Annual National Convention held September 15-18, 1999 in San Diego, California.



Holiday Awards Luncheon

on

Wednesday, December 15, 1999

The annual holiday awards luncheon of the Atlanta Chapter of IFMA will take place at The Carter Center in Atlanta. This is a lovely venue and should provide the perfect setting for our annual celebration.

Although we should not be limited by seating at The Carter Center, we have a special program planned and need to know who will be attending **NO LATER than FRIDAY, December 10th!!!**. Please take a moment and make your reservation by calling our Administrator at (404) 766-1632.

This year's holiday awards luncheon promises to be the event of the year for IFMA Atlanta. Mark your calendar now, make reservations now and come prepared to celebrate!

Look for directions in the December Chapter Newsletter.



The facilities manager's source for technology expertise

- ◆ CAFM and CMMS specialists
- ◆ Floor plan conversions to CAD
- ◆ Updated CAD plans incorporating multiple additions and renovations
- ◆ Document management experts

Call Judy Clements
404.876.0097 • JCC@CCG-LLC.COM

FOR TEN YEARS
GIVING
YOU

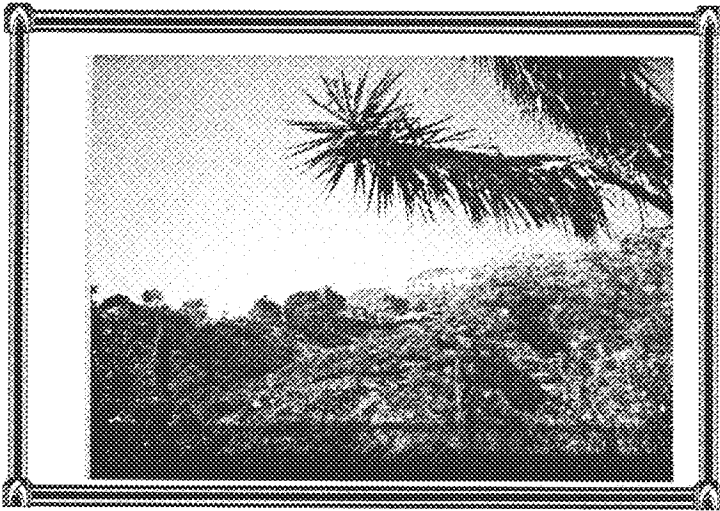
A BRILLIANT ALTERNATIVE
TO YOUR LANDSCAPER'S
SAME OLD FLOWERS!
GUARANTEED!

Call Erin Mann today at
770-822-9706



color burst
 your seasonal flower contractor

World Workplace Highlights



World Famous sign above the Hollywood Hills

Some of the IFMA Atlanta folks assembled for the reception prior to the Awards Banquet

Harry Ludwig, Beth Carnahan, Jason Haner, Tom Haslach, Tammy Gaither, Joyce Roper, Dave Flory, Barbara De Nijs Bik, Kathy Farley, & Eugene De Nijs Bik



Enjoying the Awards Banquet

Dave Flory, Matt Dawson, Joyce Roper, & Harry Ludwig

Official Ballot
IFMA Atlanta - Executive Board - 2000

November is election month for the Atlanta Chapter of IFMA. The following names and brief bio's on are for Chapter Members who have been nominated and agreed to serve on the Board.

Please mark the Ballot in the space to the left of each name, or indicate a write-in candidate in the space provided to the right. NOTE: *Willingness to serve, if elected, must be confirmed prior to submitting the name of and voting for a write-in candidate.* All members may vote.

FAX completed ballot to: Association Headquarters, Inc., Attn: Vernon Thomas, 404-768-7767 or complete and return to Vernon Thomas at the November 17th meeting. DEADLINE for VOTING is NOVEMBER 17, 1999.

_____ Joyce Roper, President or _____

Joyce has been a member of IFMA Atlanta for four years. She has been with Coca-Cola Enterprises for nine years and is responsible for the Facilities Department at CCE's corporate headquarters location, in addition to project management of corporate-related construction in Atlanta. Joyce has more than thirty years experience in office administration and management, purchasing and contracts management. She brings to IFMA Atlanta several years experience on association boards, including Executive Women International-Atlanta Chapter, serving as President in 1986 and National Trade Show chair during the international convention in Atlanta in 1998. Joyce currently is serving as CCE's team leader for the Atlanta Ballet's BRAVO! 2000 corporate campaign.

_____ Ken Gwinner, AIA, Vice President or _____

Ken Gwinner is a registered architect and is currently Vice President for Planning, Architecture and Construction for Turner Properties, a division of Turner Broadcasting System, Inc. Ken started his career twenty years ago with TBS as an architect designing the original studios and newsrooms for CNN here in Atlanta. Ken left TBS in 1990 to work as a facilities and project management consultant with Satulah Group, and then later joined the Coca-Cola Company to manage the Planning and Design Department. In 1997, he rejoined Turner and leads the significant building efforts of TBS in Atlanta and around the world. Ken has been a member of IFMA Atlanta for more than 12 years.

_____ Dave Flory, Secretary or _____

Dave is a Senior National Account Executive with CORT Furniture Rental. With CORT for over six years, Dave has in excess of 17 years experience in the furnishings industry and handles both rental and sales on a national basis for organizations headquartered in a seven state region. Dave has served for the past two years as our Treasurer, and previously served as Chair of the Associate Committee. In 1996 he was recipient of the Chapter's Outstanding Associate Award

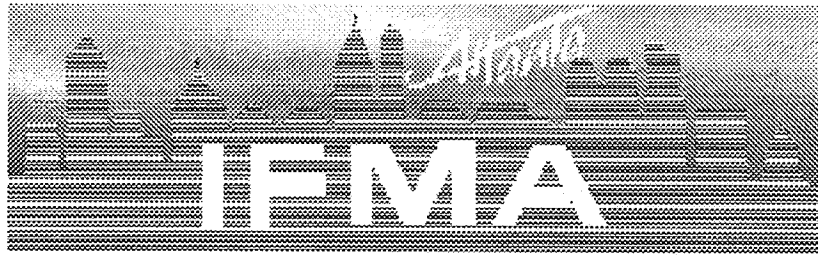
_____ Wayne Battles, Treasurer or _____

Wayne is a Facilities Manager for MCI WORLDCOM and has been with the firm for the past 13 years. Wayne is responsible for daily maintenance of the firm's space and administrative services that include space planning, building security, and contractor services for Georgia, Florida, South Carolina, and North Carolina. This will be Wayne's first year on IFMA Atlanta's Board.

Member Signature

Date

Member Name



Award Nomination Submittal – 1999

Each year IFMA Atlanta honors its own for their contributions and achievement in support of the Chapter and the profession of Facility Management. Annual Awards include:

Distinguished Member Award ... Presented to a Chapter member for outstanding contributions to Facility Management in general and to IFMA Atlanta in particular. He or she represents the best in, and serves as a role model for, Leadership, Dedication and Conscientiousness. The individual chosen is a credit to his or her organization, community, our Association as well as to the profession.

Achievement in Facility Management Award ... is presented to a professional member whose facility management program, project or concept has demonstrably and successfully contributed to more effective management of his or her organization's facilities. This award highlights the importance and significance of professional member accomplishment to the future of facility management.

Outstanding Associate Award... is presented to an associate member (provider of products and/or services) in recognition of his or her contributions of time, effort and of financial support to the Atlanta Chapter. This award recognizes that associate members play a critically important role in the overall long-term success of our Chapter.

To nominate a qualified Chapter member, provide the following necessary information and mail or fax your nomination to the Association Headquarters, Inc. Attention: Vernon Thomas at
IFMA Atlanta Awards
Association Headquarters, Inc.
1185 Willingham Drive
Atlanta, GA 30344
FAX: 404/768-7767

Deadline for receipt of nominations - November 17, 1999
For multiple nominations, photocopy the form

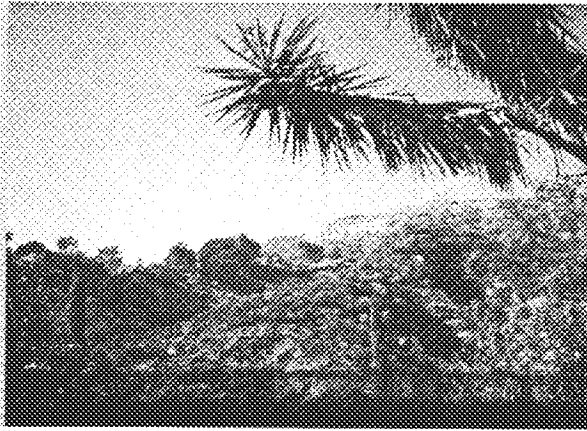
Nominee: _____
Organization: _____

Award Category: _____

Description of Nominee's Accomplishments:

Use another page for additional description.

World Workplace Highlights



**World Famous sign above the
Hollywood Hills**

**Some of the IFMA Atlanta folks
assembled for the reception prior to
the Awards Banquet**

**Harry Ludwig, Beth Carnahan,
Jason Haner, Tom Hasiach,
Tammy Gaither, Joyce Roper,
Dave Flory, Barbara De Nijs Bik,
Kathy Farley, & Eugene De Nijs Bik**



Enjoying the Awards Banquet

**Dave Flory, Matt Dawson,
Joyce Roper, & Harry Ludwig**

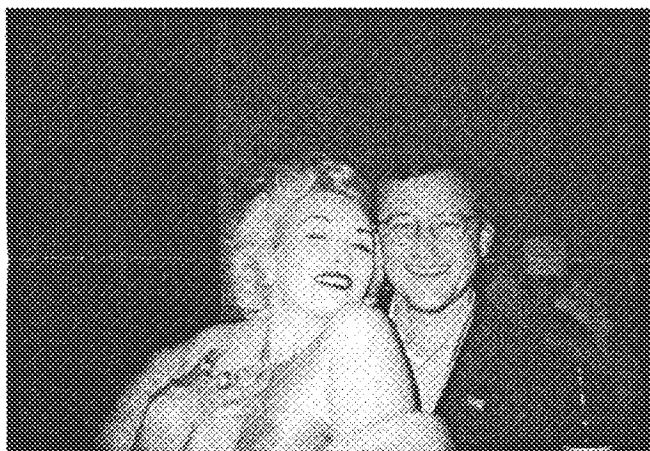
Saturday Afternoon at the Beverly Hills Hotel

**Eugene & Barbara De Nijs Bik,
Joyce Roper, Hostess Beth Carnahan,
Harry Ludwig, Tom Vernon
& Kathy Farley**



**Is this Marilyn Monroe with our
President, Matt Dawson?**

**Marilyn made a special appearance at
the Monday night party hosted by
Royal Cup, HOK, Milliken, Archer
Management, Coca Cola Fountain
& Welches**



**Marilyn enjoying the company of
Mike Butler & Harry Ludwig**

OR

**is it Mike and Harry enjoying
Marilyn's company!**



September Meeting Recap

FENG SHUI: PASSING FAD OR PROVEN CONCEPT

Did you know that there is a career corner in your house. If you hang a picture with the correct colors in the career corner it will bring good fortune to your career. That was the opening topic of our Feng Shui Presentation at 103 West last month. Our speakers Ms. Tracy Miller and Mr. Guy Ferru of Gazelle Feng Shui Consulting, explained how she was introduced to her career in Feng Shui after she read a book that told her to hang a picture in her career corner of her house.

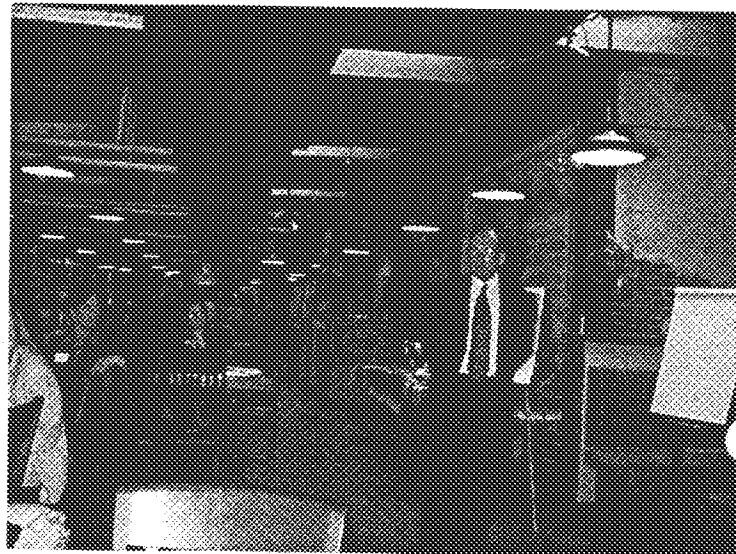
Finding your career corner may require the help of a professional Feng Shui consultant but Tracy and Guy covered a lot of simple common sense things that you can do to bring good energy into your work or living space. Things like entering your home through the front door instead of entering past the untidy garage or laundry room. Get rid of the clutter and cut down any dead trees and plants.

Feng Shui is an ancient study that has many modern applications and if you need more information Tracy and Guy can be reached at email: gazelle27@mindspring.com

Associate's Meeting Roundup

On October 13, 1999 at the Rio Bravo on New Northside Drive we had another educational meeting for our Associate Members. It was a great opportunity to network with other Associates and learn how to tweak your sales and customer service skills. Michael Baber, Director of Business Development Institute, headquartered here in Atlanta, gave an excellent presentation. Michael is a full time consultant, trainer and public speaker, specializing in business leadership, business development, customer service, and sales. He is the author of six books including his latest two on sales, *How Champions Sell* and *Max-Selling*. Michael spoke to us on how a salesperson can become a champion and how a sales manager can lead all of his or her people to greatly increase sales and/or profits. The responses were great and I think everyone walked away with some useful information. Stay tuned for more educational programs tailored for our Associate members.

Steve Sperling
Associates Chair



Calendar of Upcoming Events

CFM Exam will be administered on

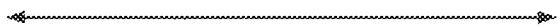
February 12, 2000

Applications must be postmarked by November

11, 1999

Applications sent by express mail must be

received by December 8, 1999



New Membership Orientation

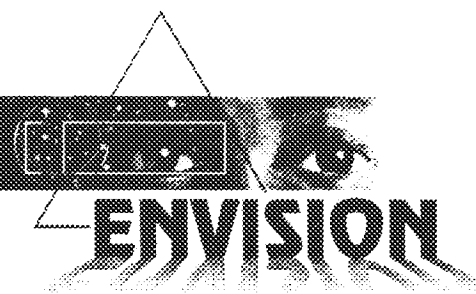
February 10, 2000, 8:00 am

@ TVS

RSVP to Association office 404-766-1631

Call Beth Chaplin 404-522-1835 with


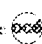
questions regarding membership



ENVISION
THE SMARTER APPROACH
TO OUTSOURCING.

It starts with a partnership committed to your objectives. Includes innovative programs that reengineer office operations for greater productivity and value. Provides the flexibility to keep you at the cutting edge. And, delivers the seamless integration of people and technology for unparalleled quality and performance.

Experience the smarter approach to outsourcing, call today for a FREE analysis of your operations:
1-800-YES-ARCHER ext. 141

Archer Management Services

 A Member of the  Group of Companies

Our Services: Mail Center Management, Records Management, Office Management, Document Management, Graphics Management, Print Management

855 Avenue of the Americas, New York, NY 10001
Tel: 212.502.2141 • Fax: 212.502.2113 • Internet: www.ArcherMGIT.com

IFMA Atlanta Membership Directory Update Form

Name: _____

Company: _____

Title: _____

Address: _____

Telephone: _____

Fax: _____

E-mail: _____

**Fax to: Vernon at Association Headquarters, Inc.
at 404-768-7767 or Tel: 404-766-1632**



HART

Without Regular Cleaning, You're Just Ringing the Dinner Bell.

Even a clean-looking carpet can be a feeding ground for any number of organisms. It's more than leaving behind a few bread crumbs—any organic matter can become meal time.

The more food, the more microscopic life—and the more allergies (or even illness) among the human population in your building.

That's where MilliCare® comes in. MilliCare is designed not only to keep your carpet looking new longer than conventional methods—it removes allergens, as well as their food source.

The difference is MilliCare's unique dry method that scrubs deep between the fibers to safely remove all that your carpet's been harboring.

It's quick. It's easy. And it works.

It's all part of MilliCare's Perpetual FloorPlan™ that gives total care throughout the life of your carpet.

MilliCare is the recommended maintenance for Milliken Carpets. www.millicare.com



For more information on MilliCare contact
Tom Haslach 770-975-1113
thaslach@mindspring.com

International Facility Management Association
Atlanta Chapter
1185 Willingham Drive
Atlanta, GA 30344

Directory Update

Note corrections to
mailing label at right
(include phone/fax
numbers).

