

International Facility Management Association



IFMA - Atlanta Chapter

P.O. Box 43306

Atlanta, Georgia 30336-0306

June 1998 Issue

1998 EXECUTIVE BOARD

President: Sheryl Yetsko
Long, Aldridge & Norman
(404) 527-8332

V. President: Matt Dawson
Alston & Bird
(404) 881-7000

Secretary: Kathy Farley
King & Spalding
(404) 572-4934

Treasurer: Dave Flory
Cort Furniture Rental
(770) 751-1110

Past President: Kathy O. Roper
Sprint Communications
(404) 649-5011

1998 SUSTAINING PATRONS

AirCond Corporation
APCO

Atlantic Business Systems, Inc.
Boritz Flooring Group, Inc.
Carithers-Wallace-Courtenay, Inc.
Cathcart Allied Storage Co., Inc.

Cecil Malone Company
Choate Construction Company
Contract Marketing
Cort Furniture Rental

COVAN Worldwide Moving, Inc.
DeKalb Office Environments
ReGeneration

DuPont Flooring Systems
Egan Visual, Inc.

Farrington Design Group
General Building Maintenance
Hardin Interior Services

Haworth, Inc.

Gensler

Herman Miller, Inc.

Interface, Bentley, Prince Street
Knoll

Meridian, Inc.

Milliken & Company

National Furniture Liquidators

Pointe Services, Inc.

Rite Way Service, Inc.

Royal Cup Coffee, Inc.

Shaw Contract Group

Steelcase, Inc.

Wegman Associates

Monthly Meeting

Wednesday, June 17, 1998 • 103 West

Topic: Charles Brown - Facilities Development in Atlanta

Time: 11:30 a.m. - 1:30 p.m.

Cost: \$20 Member; \$25 without advanced registration
\$35 Guest; \$40 without advanced registration

Location: 103 West - Valet Parking Optional

Reservations: IFMA Office (770) 489-7727, ext. 23 or FAX (770) 489-7729

*** Please call by Friday, June 12, 1998 to make your reservations.

Please note: Cancellation of your reservation must be made 48 hours or more in advance of the meeting. A \$5.00 service charge will be added to all no-show invoices.

Much of Atlanta's continuing success as a leading market will hinge on its ability to continue to attract quality people, employees and corporations. So says Charles Brown, consultant and pre-team leader for Jacoby Inc., which is working on the redevelopment of the Atlantic Steel property. Mr. Brown has extensive knowledge of how important those factors are, as he has served on the Board of the Buckhead Coalition, COPA, The Olmsted Linear Park Alliance, Forward Atlanta Campaign and the Atlanta Chamber's "Dream Team." His employment has also given him a broad base of knowledge about development in Atlanta, as he was involved not only in the development Atlanta Center, the first, and largest data center in the Southeast, but also in the development of Technology Park, which was the recent recipient of the "Governor's Award" for its contribution to community economic development. His knowledge gives him valuable insight on how important the facility is in recruiting and maintaining quality employees in this market. Not only is the facility an important factor for recruiting and retention, it also enhances a company's creativity and production. Come hear Mr. Brown discuss facilities management and development in today's Atlanta. You might get some interesting ideas about your own facility as you listen to him highlight Technology Park, Lenox Park and Johns Creek, as well as the development of the Atlantic Steel property. See you there!

Check out our Web Site!

If you haven't discovered the IFMA Atlanta Chapter web site, make a point to do it today!

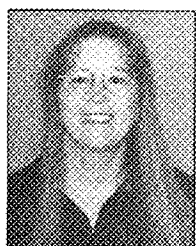
www.ifma.org/atl/atl.htm

OOPS!

Due to a previous error in the Company Section of the Atlanta Chapter of IFMA Directory, a replacement insert is enclosed.



President's Message



by Sheryl Yetsko

If you were not able to make our luncheon in May, you really missed a special meeting! I believe everyone in attendance was touched by Brian Riley's message, as well as seeing the work firsthand that the Atlanta Chapter had been able to accomplish for REACH. Our special thanks go to Harry Ludwig for his tireless efforts in putting this program together. There were some very special guests in attendance from REACH, The Atlanta Business Chronicle, The United Way, and our own Regional Vice President and International Secretary from IFMA. As REACH sponsored our luncheon, all proceeds collected are being designated for our next IFMA-Atlanta Community Service Project. I am happy to say that Harry Ludwig and Howard Chapman are already busy investigating our next project. For those of you who saw the benefit of our participation in the REACH project but were not able to participate—don't despair. You will have an opportunity to participate in our next community service project. Howard advised me that we need our professional facility managers, as well as our associate members, to assist in our upcoming projects. Give Howard Chapman a call if you are fired up and ready to go!

The Atlanta Chapter Executive Board, as well as our Education and Foundation Chairs recently attended the Mega-Regional Conference held in May in Orlando. The Southern and Southwestern Regions joined together and there was a wealth of information shared. This event allowed us not only to share information with other chapter leaders, but to strengthen "the infrastructure"

of IFMA. Our very own Matt Dawson and Dave Flory chaired one of the sessions on Mentoring and did an excellent job! We left Orlando with renewed energy as Chapter leaders and a wealth of new ideas. We also brought home a renewed pride in our Chapter as we gauge ourselves against other chapters in our association. Although we still have areas of our Chapter to develop, we seem to be progressing steadily in the right direction.

(Oops)—In my article last month, I noted that Doug Aldrich had assisted me on a project in Wisconsin. Doug is in Michigan, which is where I needed assistance—not Wisconsin. Sorry Doug.

I have just learned that one of our Committee Chairs is leaving us—Ms. Christina Parks. Christina has served us well as our Newsletter Committee Chair this year. Christina has accepted a new position in Southern California. I will miss working with Christina and wish her all the best. Our loss will be Orange County's gain!

We have a special fund raising event planned for our June meeting, so bring a little extra cash—it's for a good cause—and you might leave a little richer than you came! Hope to see you there.

As always, please call me if you have any comments or concerns at 404-527-8332.

Sheryl Yetsko

Calendar of Upcoming Events

DATE	EVENT/CONTACT	LOCATION
■ July 15 11:30-1:30PM	<i>Transportation Issues, Options & The Future</i>	Villa Christina
July 16 5:30-7:30PM	<i>Prospective & New Member Orientation</i>	TVS Interiors
■ August 19 11:30-1:30PM	<i>Build vs. Lease Analysis</i>	The Depot
■ September 16 11:30-1:30PM	<i>Technology Infrastructure</i>	Cobb Area
October 18-20	<i>World Workplace 98</i>	Chicago, IL
■ October 21 11:30-1:30PM	<i>Motivational Speaker</i>	Villa Christina
November 12-13	<i>Fifth Annual IFMA Asian Conference on Facility Management</i> Call: 1-713-623-4362	Hong Kong
■ November 18 11:30-1:30PM	<i>Alternative Office solutions - Professional Point of View</i>	103 West
■ December 16 11:30-1:30PM	<i>Awards Banquet</i>	TBD

■ Denotes monthly IFMA meeting. RSVP: Ginger Walker, 770/489-7727 x23

May Meeting Recap

BRIAN RILEY, M.A.

IFMA ATLANTA'S IMPACT AT REACH

Approximately 125 attendees gathered on May 20th in the beautiful Cator Woolford Gardens at REACH, in Druid Hills, for a celebration of the success of IFMA Atlanta's Community Service. Tables, decorated with floral centerpieces, were set up beneath a large white tent with sides open to the gardens. Filling the tent, the tables spilled out onto stone patios at both ends. Food was set up buffet style along a garden walkway which was accessed by crossing one of two bridges over a creek.

President Sheryl Yetsko opened the meeting with a warm welcome and spoke briefly of the Community Service accomplishments of IFMA Atlanta as a result of the new direction the Chapter has been taken in by Harry Ludwig and Howard Chapman.

Harry Ludwig recognized special guests representing the United Way of Metropolitan Atlanta, IFMA International and the press. Among those attending were Mr. Greg Shroeder, Vice President and CFO of the United Way, Mr. Kweku Forstall, United Way Vice President, Mr. Randy Merrill who serves on the Facilities task force of the United Way and who established the IFMA link with REACH, Mr. Bill Heard, South Region Vice President representing IFMA International, Ms. Cheryl Waybright, Association Secretary and Ms. Paula Stevens with *The Atlanta Business Chronicle*.



In introducing Howard Chapman, Harry reminded the assembled members and guests that a major element in the success of realizing a vision is finding the right person to head up the effort required to turn it into reality. As Chapter President,

he asked Howard about two years ago to serve as Community Services Committee Chair and help lead the Chapter in this new direction (see accompanying sidebar, page 4, *IFMA Atlanta Community Service*). Howard not only agreed, he hit the ground running working through the United Way, with Harry and the other partners in what became the most far reaching, successful effort of giving back to the community in IFMA Atlanta's 15+ year history.



Howard introduced REACH Executive Director, Brian Riley, who began his address by briefly covering the history and mission of the organization in educating and assisting children and adults with cerebral palsy. The letters REACH stand for Rehabilitation and Education for Adults and Children. Mr. Riley continued by elaborating on the impact of IFMA Atlanta at REACH. IFMA Atlanta/REACH Partners contributed consulting expertise in resolving roofing, energy, safety, security and flooring problems and have improved the facilities for both clients and staff by donating floor covering and installation services, truck loads of furnishings, office equipment, accessories, a modular work station for the reception area, an office copier, CAFM software and much needed advice on a host of facility management questions from maintaining interior trees and plants to space planning.

Becoming emotional, Mr. Riley described to those assembled how the \$25,000 a year in energy savings alone will translate into staff, equipment and services, on an ongoing, year in and year out basis, to provide a higher level of improved support and services to adults and children with cerebral palsy. Moving examples were also cited of how new play areas were opened up for the children as a result of solving the long standing flooring problems and carpeting never before carpeted space. (Mr. Dal Burton, Chairman of the Board of REACH had previously shared with Harry and Howard his long standing concern about the flooring in the facilities...a concern not previously addressed because of a lack of funds.)

(continued on page 4)

May Meeting Recap continued from page 3

Mr. Riley concluded his message with a presentation to the Chapter of a banner created by the children as an expression of their appreciation for what IFMA Atlanta has accomplished at REACH. He also presented to President Sheryl Yetisko a special plaque from the executive staff at REACH to IFMA Atlanta and presented tokens of appreciation to Howard Chapman and Harry Ludwig.

Your Chapter Board months ago decided to apply the proceeds from last year's golf outing to IFMA Atlanta's work at REACH. After thorough needs based research and consideration of a number of options, the decision was made to purchase and present to Brian Riley and REACH a golf cart. Accordingly, a red, black and white golf cart (IFMA Atlanta's official logo colors) was purchased in the golf cart capital of the country...



...Peachtree City, Georgia. Adorned with a huge bow and an inscribed plaque, the cart was driven onto the patio by Tom Haslach as Harry presented the key to Brian Riley. The golf cart will enable staff to more quickly and easily traverse the 33 hilly acres of the REACH gardens and complex...a not inconsequential need.

Following Brian Riley's address and the special presentations, attendees were divided into groups by the REACH executive staff and walked up the road through the forest to REACH's cluster of buildings for a tour. Hearing about IFMA Atlanta's impact at REACH made an impression. However, seeing the results throughout the buildings created a lasting impression made even more so by special signage displayed everywhere drawing attention to specific problems and needs successfully addressed by the work of the IFMA Atlanta/REACH Partners.

In a follow up phone call to Harry on Thursday, May 21st, Brian reported that the golf cart is also being used to transport elderly and mobility impaired visitors from REACH's buildings down to and back up from the gardens. Brian also shared another use of the golf cart:

The most meaningful and important employment, by the REACH staff, of the IFMA Atlanta golf cart will be to transport clients to REACH to and through the gardens...enabling them to enjoy, many for the first time, the beauty and serenity that has always been in such close proximity and yet, due to their physical limitations, so very far away!

The IFMA Atlanta/REACH Partners, the Board, Chapter members and guests...all in attendance...were very moved by, and can justifiably take pride in what IFMA Atlanta has achieved in Community Service. The Chapter's work at REACH is the beginning, the foundation, of this vision and initiative. Our chapter will continue to give back to the community that which we are about and do best...Facility Management.

IFMA Atlanta Community Service

For a number of years, the members of the Atlanta Chapter of the International Facility Management Association (IFMA Atlanta) have annually made contributions to help meet the needs of the Atlanta community. Community Service contributions have ranged from staffing GPTV fund raisers to financial contributions to Habitat for Humanity.

A little over a year and a half ago, IFMA Atlanta began a new initiative in Community Service...one that would encourage and provide opportunities for the direct and active involvement of both professional and associate members as well as the organizations they represent.

This new Community Service Vision involved contributing that which we do best...Facility Management. In determining how to channel our contributions, the decision was made to identify and assist one or more United Way supported agencies which own properties but lack the financial resources and/or wherewithal to meet Facility Management needs.

By contacting, and working with, United Way management, IFMA Atlanta was linked with REACH in what became an IFMA/Atlanta/REACH Partnership. With the considerable efforts and contributions of the IFMA Atlanta/REACH Partners, very substantial accomplishments have been realized. This partnership and these accomplishments are celebrated today.

Using what we have learned, it is the IFMA Atlanta Vision to carry on this Community Service work, pioneered at REACH, to assist other United Way supported agencies in addressing and meeting their Facility Management needs.

Harry Ludwig, III
Past President
IFMA Atlanta

FMA Atlanta/REACH Partners

FMA Atlanta and REACH wish to acknowledge the contributions of the following PARTNERS and organizations whose time, energy, efforts and gifts have made so much possible and produced the results described and seen at REACH on Wednesday, May 20th.

Consultation, Direction & Oversight:

Brian D. Riley, M.A. REACH
Harry L. Ludwig, III King & Spaulding
Howard L. Chapman Royal Cup Coffee
L. Carter Farish, CFM Grubb & Ellis Management Svcs.
T. Randolph Merrill C.B. Commercial

Energy/HVAC:

Charles Cayce AirCond
Richard Prange Grubb & Ellis Management Services
Richard Burton Sylvania Lighting Services Corp.

Floor Covering & Installation Services:

Thomas Haslack MilliCare Environmental Services
Maureen A. James Milliken Carpet
Melissa Houston DeKalb Office Environments
James A. Lanier Interface Flooring Systems, Inc.
Holly Holton Bonitz Flooring Group, Inc.
Waynelia P. Glaser Mohawk Industries
Tommy Carnes DuPont Flooring Systems

Furnishings, Office Equipment & Accessories:

Harry L. Ludwig, III King & Spaulding
Ann Steele Siemens Energy & Automation, Inc.
Haidee Courson Wegman Associates, Inc.
Martha Lee Osborne, CFM U.S. Healthworks
Sheryl Yetsko Long, Aldridge & Norman
M. Kathy Farley Personal Donation
Eugene F. Meany Personal Donation

Moving Services & Equipment:

Diane Malin Graebel Movers

Plants (Interior):

Sheryl T. Berg A Plant Peddler

Space/Workstation Planning & Software:

Sonya Tablada Facility Resources, Inc.
Clara M. Smith KDA, Inc.

Safety & Security:

William B. Thorpe Thorpe Enterprises
Charles Coke Thorpe Enterprises

Roofing:

O.E. Smith Retired

WE'LL HELP YOU

GET MORE "COMFORTABLE" WITH

Outsourcing

We can make your organization work more efficiently, productively and profitably. We'll provide a highly motivated and expertly trained support staff, the most efficient processes and technologies and an unbiased approach to equipment recommendations.

We'll be happy to send you a brochure showing how Archer clients have become quite comfortable with outsourcing. Take a minute now and call us at 1-800-YES-ARCHER x141.

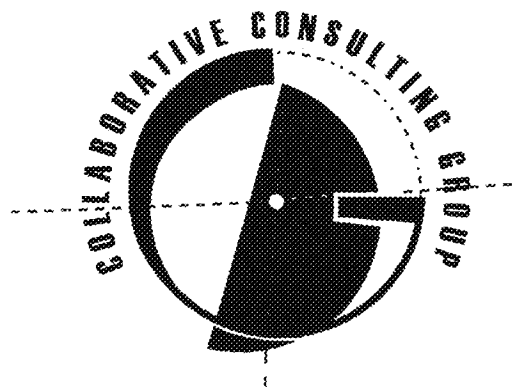
Our Services:

Mail Center Management
Records Management
Office Management
Document Management
Graphics Management
Print Management

Archer
Management
Services



Corporate Office: 855 Avenue of the Americas, New York, NY 10001
Tel: 212.502.2100 Fax: 212.502.2113 Internet: www.ArcherMGT.com
Atlanta Office: Chris Eckl, Tel: 770.392.3342 Fax: 770.392.3462



Are your floor plans up to date? Probably not.

Perhaps your plans only reflect your last big renovation. Now you are facing another big move.

CCG can help. We'll bring your plans up to date and keep them current for you. Every week, month, quarter - you name it - you'll get as-built drawings or CAD files to use with your facilities staff, contractors and consultants. Even if you have no floor plans at all right now. We can save you thousands of hours of frustration and thousands of dollars in change orders and fees. Just ask us.

Call Judy Clements

404.876.0097 • ICC@CCG-ILC.COM

Welcome New IFMA Members!

New Professional & Associate Members as of May 1998.

NEW PROFESSIONAL MEMBERS (14)

Shelley Baranes	IXL, Inc.
Kenneth Beaver	Sutherland, Asbill & Brennan, LLP
Kimberly Carter Kays	BellSouth Telecommunications
Melissa Crook	Boeing North American
Edwin Fielder	COMPASS Management & Leasing
Ann Holbrook	Partner Design Group
Keith Holland	ADP
Reed Molitor	MCI Telecommunications
Bonnie Nestle	The Athlete's Foot Group, Inc.
Sarah Peek	Motorola, Inc.
Stewart Smith	Sutherland, Asbill & Brennan, LLP
Jill Stevens	Smith, Grambell & Russell, LLP
Dominic Tasillo	Griffin Services, Inc.
Jan Whalen	Habit, Arogeti & Wynne, PC

NEW ASSOCIATE MEMBERS (5)

Carol Brewton	MilliCare Environmental Services
Charles Dasher	Shaw Contract Group
Roger Reich	Data Sphere Technologies, Inc.
Thomas Rybolt	MVR Group
Wayne Wood	Open Plan System

Member Profiles

New Member

Name: MAUREEN WEIDNER



Company/Profession:
The Normandie Co.

Membership Date: 1/98

Hobby/Interest: Golf, Arts/Crafts, Floral Designs.

Existing Member

Name: TOM HASLACH



Company/Profession:
MilliCare Environmental Services

Membership Date: 1/98

Hobby/Interest: Running marathons, triathlons, home improvement projects.

If you are interested in submitting a member profile, please contact Sheryl Yetsko at 404/527-8332.

IFMA Membership Drive

1998 TOTALS

Professional Members - 28

Associate Members - 19

**HELP OUR CHAPTER IN
QUALITY AND QUANTITY!**

**Our objective
is to add
30 professional members
from
June 1 to August 31.**

- Prizes will be awarded for recruiting new members.
- A special prize will be awarded to the person who recruits the most new members. (Your name must be in the referred to blank for you to receive credit.)
- Call Ginger Walker at the Association Office for applications : 770/489-7727.
- The clock is ticking - let's get started!

EXPLORE THE WORKPLACE FROM ALL PERSPECTIVES

Only one event makes it possible to explore the various aspects of a productive workplace. Attend World Workplace '98 to learn and discuss the latest ideas for providing effective work environments.

WORLD WORKPLACE '98



Chicago, Ill., USA
Oct. 18-20, 1998

For more information, call 1-713-623-4362
or send an e-mail to events@ifma.org.

Career Corner

The Career Services Committee is always looking for new and potential positions to announce in the newsletter. If you are aware of any job opportunities, please contact Marty Mason, Career Services chair (770-952-9200 FAX) with a brief description of each position. The following positions are available to interested candidates. If interested, please contact the employer indicated directly.

PARSONS INFRASTRUCTURE & TECHNOLOGY GROUP, INC:

• ADMINISTRATIVE MANAGER - NORCROSS, GA

Seeking experienced professionals to manage administrative space planning and moves projects for a Fortune 500 client in Southeast. Bachelors degree, minimum 10 years experience, and strong project management skills required. Space planning, moves management and systems furniture experience a plus. Fax résumé to Rick Brettin, 1-770-446-4905.

POUNDS HARRIS MHR:

• FACILITIES - PROGRAM MANAGER - ATLANTA, GA

Atlanta Consulting Program Management firm needs Project Manager for facilities and site development on multi-projects. 10+ yrs. exp. Degree in Building Construction, Civil, Construction Management or Architecture. License in appropriate field required. Develop project delivery, strategic planning, prepare reports for prog mgmt, provide programming, scheduling and budgets. Strong knowledge of prog mgmt techniques and scheduling software. Excellent "people" skills. Fax résumé to 770/975-1195.

JOHNSON CONTROLS:

• MANAGER, OPERATIONS ANALYSIS & ESTIMATING - ATLANTA, GA

Responsible for managing the technical estimating function to ensure all technical estimates meet IFM operational goals and objectives; ensure all proposals validate staffing, define scope of services, and develop process improvements for operations & maintenance. Seven years experience in facility operations & maintenance or equivalent combination of education and experience required. Travel required. Attn: DE98002

• SENIOR PROPOSAL SPECIALIST - ATLANTA, GA

Candidate will be an integral part of our Sales and Marketing Process, developing proposals, sales presentations, marketing collaterals and other materials that demonstrate the value that we provide to over 300 clients worldwide. Experience in technical or creative writing, and in a proposal environment is needed. Must obtain a Bachelor's degree in Accounting or Business Administration. Attn: DE97018

• MANAGER, COMMERCIAL PRICING - ATLANTA, GA

Responsible for managing all pricing activities in support of marketing, developing and maintaining pricing models, strategies, and conducting financial analysis as necessary to quantify value offered by Johnson Controls. Must obtain a Bachelor's degree in Accounting or Business Administration. Attn: DE97014

For these 3 positions, please fax a résumé including salary requirements to Johnson Controls, Inc., HR Dept, 770/392-4148

MRI:

• PROJECT MANAGER - ATLANTA, GA

Atlanta Based Contract Office Furniture Manufacturer looking for an ASID and/or CQID certified designer. 40% travel, working directly with sales group and clients. Customer service skills a must. Call or Fax résumé to Bob Brown 404/252-1983; FAX 404/252-1984 or e-mail: mrisandy@msm.com

BOEING MISSILE SYSTEMS:

• FACILITIES PROJECT ENGINEER - DULUTH, GA

Boeing Missile Systems in Duluth has an exceptional opportunity for an experienced Facilities Project Engineer. Responsible for planning and administering all phases of major facilities projects or sub-projects within a total facilities complex; providing guidance for planning, acquisition, allocation, modification, and construction of facilities projects; preparing appropriation requests and job orders for a total project; and coordinating the preparation/issuance of criteria, specifications, estimates, and schedules for a total project. Candidate will be the facilities and operations focal for the preparation and cost management of the division capital budgeting process. Requires Bachelor's degree in Industrial Engineering or related technical degree; 6+ years related experience, including project management; and strong PC software (Microsoft Office), AUTOCAD 13/14 and verbal/written communications skills.

We offer a competitive salary and complete benefits package. Please mail or fax your résumé to: Human Resources L-B, Boeing Missile Systems, 1800 Satellite Blvd., Duluth, GA 30097-4099; FAX: 770/497-5101. No Phone Calls, Please. An Equal Opportunity Employer Supporting Diversity in the Workplace.

RENU ENTERPRISES, INC.:

• PROJECT MANAGER - ATLANTA, GA

Requires one year experience in Cad and AutoCAD and knowledge of Steelcase System Furniture, Production, Layout, Installation, Punch, Dealing with Customer from beginning to the end. Must be flexible, sharp and hard worker. This is a permanent, full-time position, 8:00 am - 5:00 pm, Mon.-Fri., salary to be discussed at interview. Please call for appointment or fax résumé to Lee Fukartas, President at TEL 404/885-9000 or FAX 404/885-9969.

Everyone sits at a used desk. Why pay new prices?

You can purchase brand
name preowned furniture at
prices 80% less than new.



*Specializing in Herman Miller
and Steelcase office furniture.*

*NFL has Atlanta's largest
inventory of used workstations,
desk chairs and files.*

NATIONAL FURNITURE LIQUIDATORS

151 14TH STREET • SUITE 102 • ATLANTA, GEORGIA 30318
404.872.7280 • Fax 404.872.7044 • www.nflinc.com



International Facility Management Association
Atlanta Chapter
P.O. Box 43306
Atlanta, Georgia 30336-0306

DIRECTORY UPDATE

Note corrections to
mailing label at right
(include phone/fax
numbers).