

International Facility Management Association



IFMA - Atlanta Chapter

P.O. Box 43306

Atlanta, Georgia 30336-0306

April 1998 Issue

1998 EXECUTIVE BOARD

President: Sheryl Yettsko
Long, Aldridge & Norman
(404) 527-8332

V. President: Matt Dawson
Alston & Bird
(404) 881-7000

Secretary: Kathy Farley
King & Spalding
(404) 572-4934

Treasurer: Dave Flory
Cort Furniture Rental
(770) 751-1110

Past President: Kathy O. Roper
Sprint Communications
(404) 649-5011

Monthly Meeting

Wednesday, April 15, 1998 • Villa Christina

Topic: Kathleen Collins, Successful Images

Time: 11:30 a.m. - 1:30 p.m.

Cost: \$20 Member; \$25 without advanced registration
\$35 Guest; \$40 without advanced registration

Location: Villa Christina

Reservations: IFMA Office (770) 489-7727, ext. 23 or FAX (770) 489-7729

*** Please call by **Friday, April 10, 1998** to make your reservations.

Please note: Cancellation of your reservation must be made 48 hours or more in advance of the meeting. A \$5.00 service charge will be added to all no-show invoices.

1998 SUSTAINING PATRONS

- AirCond Corporation
APCO
- Atlantic Business Systems, Inc.
- Bonitz Flooring Group, Inc.
- Carithers-Wallace-Courtenay, Inc.
- Cathcart Allied Storage Co., Inc.
- Cecil Malone Company
- Choate Construction Company
- Contract Marketing
- Cort Furniture Rental
- COVAN Worldwide Moving, Inc.
- DeKalb Office Environments
ReGeneration
- DuPont Flooring Systems
- Egan Visual, Inc.
- Farrington Design Group
- General Building Maintenance
- Hardin Interior Services
- Haworth, Inc.
- Gensler
- Herman Miller, Inc.
- Interface, Bentley, Prince Street
Knoll
- Meridian, Inc.
- Milliken & Company
- National Furniture Liquidators
- Pointe Services, Inc.
- Rite Way Service, Inc.
- Royal Cup Coffee, Inc.
- Shaw Contract Group
- Steelcase, Inc.
- Wegman Associates

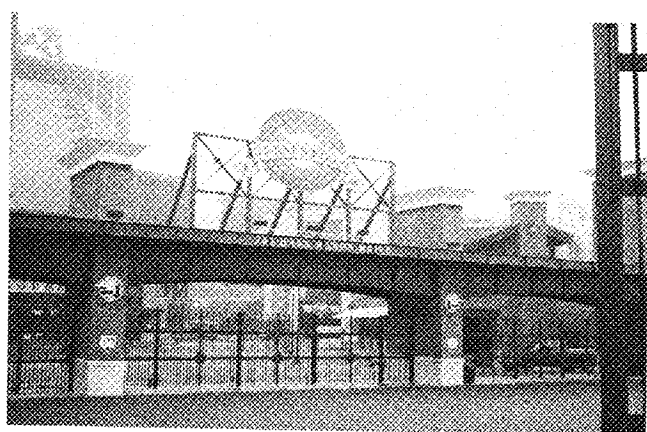
Ever wondered how your appearance has affected your relationships with others, particularly your business relationships? Did you know that your personal image can affect how trustworthy, or honest, or approachable that other people perceive you? Have you ever noticed how some people make you uncomfortable with their body language, and wondered how to avoid creating that feeling in others? Then you won't want to miss April's monthly meeting. Kathleen K. Collins is the founder of Successful Images, and a nationally recognized expert on image. She develops and conducts corporate seminars for both men and women, showing them how to project a confident and positive visual image. She has conducted lectures and workshops for corporate clients such as Milliken Carpet, The Ritz-Carton Hotel Company, Trust Company, The Coca-Cola Company, and many others. Her lectures address issues such as relating to different personality types, body language and business etiquette, and explanation of why image is important, as well as information on how to develop a professional image that is honest, approachable and trustworthy. Do yourself a favor—don't miss this one!

March Meeting Recap

TURNER FIELD TOUR

If you like baseball — or even if you don't — I hope you didn't miss the March monthly IFMA meeting. The event was a tour of Turner field, and the turnout was the best this year. The sports arena is a state-of-the-art facility, with environmental and security systems run by remote control. The normally fabulous view of the Atlanta

skyline from the Stadium club was partially obscured by low hanging fog, but that didn't dampen any enjoyment of the tour. Visiting the Braves dugout and walking out on the field were memorable experiences for all. The only thing that would have made it better would have been a hot dog, a beer, and a baseball game! See page two for more photos from the tour.



President's Message



by Sheryl Yetsko

I need to advise you of some important issues in my message, so I hope you will read on.

Your IFMA Atlanta membership directory updates for 1998 will be sent within the next two weeks. Please advise us if you do not receive yours.

We received the responses necessary to ratify our ByLaws. Thank you for your cooperation.

We are nearing the end of the first quarter, and our Education Committee is busy working on some important programs to allow for professional growth of our chapter members. In addition, we are working to promote our profession within the Georgia University system. This has been successful in other geographic areas, but not in Georgia, thus far. I would encourage each of you to mark your calendars for upcoming educational opportunities. There are articles in this Newsletter for your review and I will also promote them at our monthly meetings. We will be having a breakfast meeting on April 21st with a special guest moderator, so come and learn about some of the exciting educational opportunities available to our members. We want to assist you in achieving professional growth, and we believe one way to do that is thru CFM designation. If you do not know what that is, you really should come to our April 21st meeting!! (Special thanks to Audrey Keppler of Holiday Inn Hospitality for arranging accommodations for us!)

I am very happy to report that Sheila Foster has agreed to serve as our IFMA Foundation Southern Liaison. We are just getting started on this program, so I hope you will give Sheila your support in developing this important program. Go Atlanta!

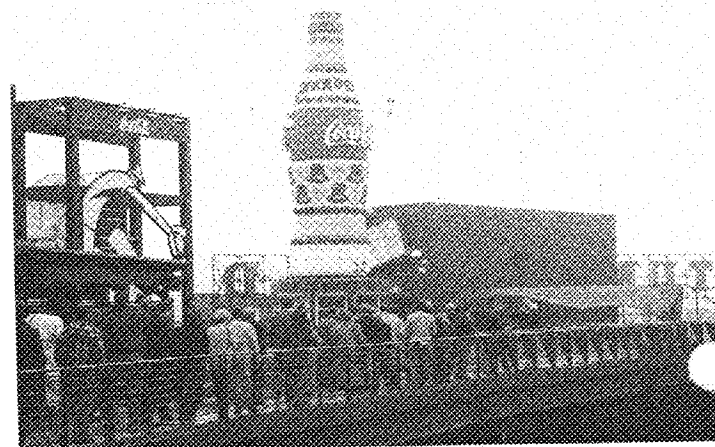
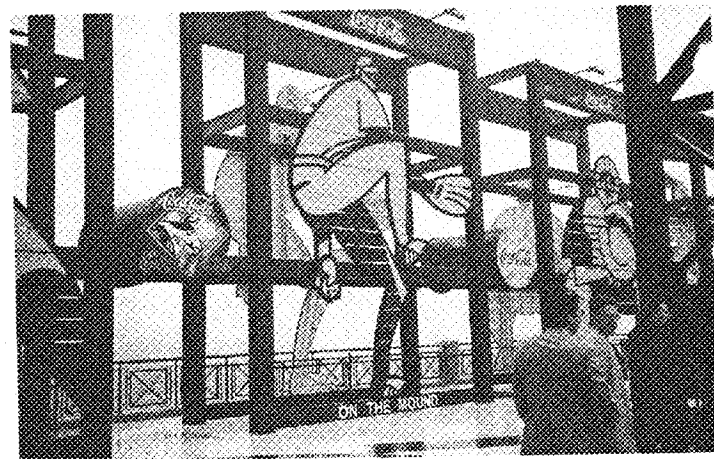
Last, but not least, I would like to thank Michael Roper and his staff for the tour of the new Atlanta Federal Center which we had on February 26th. There were about two dozen of us who were able to participate in this tour, and we truly enjoyed it! This Federal Center is the 4th largest in the United States. It is made up of four buildings—the Tower, Mid-Rise Building, Bridge, and the renovated Rich's Building. We were able to tour each of these areas and particularly enjoyed the child care center (which cares for approximately 120 children—the largest in the S.E.), the state of the art health club, and conference facilities. All of us were impressed by the renovation project of the Rich's Building. We even visited

Mr. Rich's original office, which was restored and is now being used by the National Parks Service. Special thanks go to Kathy Roper for her assistance in putting this tour together.

It is gratifying as President to have the support of members who care about this Chapter and its continued success. Thank you for being willing to go the extra mile!

Sheryl Yetsko

...More Turner Field Tour Photos



Calendar of Upcoming Events

DATE	EVENT/CONTACT	LOCATION
April 16 5:30-7:30PM	Prospective & New Member Orientation RSVP: Ginger Walker, 770/489-7727 x23	Herman Miller
May 1-2	Mega-Regional Conference	Orlando, FL
May 3-6	59th Symposium-Strategies for Improving Workplace Performance - \$395 for AIA, IFMA & IIDA members; Call: Frank Carberry, 215-335-9400	Charlotte, NC
May 7-8	"Facilities New Ways of Working" The Sheraton New York Hotel Contact: 800-950-1314, ext. 2612	New York, NY
■ May 20 11:30-1:30PM	REACH/ Community Service Project - Bring Your Boss	REACH
June 1-2	11th Symposium on Improving Building Systems in Hot & Humid Climates - Radisson Plaza Hotel Call: Dawna Rosenkranz, 409-847-8950	Fort Worth, TX
■ June 17 11:30-1:30PM	Atlanta - Master Plan	Villa Christina
July 15 11:30-1:30PM	Transportation Issues, Options & The Future	103West
July 16 5:30-7:30PM	Prospective & New Member Orientation	TVS Interiors
■ August 19 11:30-1:30PM	Build vs. Lease Analysis	The Depot
■ September 16 11:30-1:30PM	Motivational Speaker - Bring Your Boss	Villa Christina
October 18-20	World Workplace 98	Chicago, IL
■ October TBD 11:30-1:30PM	Technology Infrastructure	Cobb Area
November 12-13	Fifth Annual IFMA Asian Conference on Facility Management Call: 1-713-623-4362	Hong Kong
■ November 18 11:30-1:30PM	Alternative Office solutions - Professional Point of View	103 West
■ December 16 11:30-1:30PM	Awards Banquet	TBD

■ Denotes monthly IFMA meeting. RSVP: Ginger Walker, 770/489-7727 x23

Educational Breakfast Meeting

Please join us for our Kick-Off meeting on Tuesday, April 21st at Holiday Hospitality (formerly Holiday Inn Worldwide) at Three Ravinia Drive in the Perimeter area. We will meet from approximately 7:30 - 9:00 a.m. We are hoping this schedule will allow you to arrive at work at a reasonable hour—fed, enlightened, and enthusiastic.

Our special moderator for this meeting is Ed Rondeau, CFM, IFMA Fellow, Foundation Trustee, and past Atlanta and International President. Ed will enlighten attendees about details of certification testing, especially in the real estate, financial and project management areas.

The Education Committee will also provide:

- Overview of IFMA Certification Program
- Mechanics of Testing
- Benefits of becoming Certified
- Upcoming Educational Seminars

Any member interested in attending this informative meeting, please contact Sheryl Yetsko at 404-527-8332 for directions and to allow us to plan accordingly.

We hope to see you there!!

—Ann Steele, Education Chair



Member Highlight

Lora C. Riley, IFMA, IIDA has accepted a position as Sr. Facilities Design Client Manager with The Coca-Cola Company, Atlanta, GA. Lora has been in the Atlanta Facilities/Design community since 1982 and previously worked for Georgia-Pacific, Turner Properties and most recently Crawford & Company.

FMA Atlanta REACH's Out

It all began with an idea and a phone call from former IFMA chapter President Harry Ludwig to Community Services Chairman Howard Chapman in September, 1996. IFMA is filled with a wealth of expertise in the facility management field. Why not offer that knowledge to United Way agencies?

It sounded great and very simple but Howard found that getting the United Way to understand what our organization could contribute proved difficult. The committee did not give up and found a very willing and eager Brian Riley, Director of REACH (Rehabilitation & Education for Adults & Children, Inc.). A former construction manager and newly appointed Director, Brian saw a tremendous need at REACH and understood what IFMA could contribute.

REACH was founded in 1949 by a group of innovative parents and supporters, looking for a way of providing education and therapeutic needs to children with cerebral palsy. Their early efforts raised \$75,000 for the purchase of a beautiful home and 33 acres on Ponce de Leon Avenue from the Woolford family. Over the years, services have been expanded as have the facilities on the grounds.

Today, REACH accepts children ages six weeks to three years and adults ages 18 and older who have a variety of special needs including Downs Syndrome, spina bifida and developmental delay in its Developmental Day Care.

Through its adult services program, instructors teach vocational and educational skills. Adults are placed at participating private employers or help in the on campus print shop. A new idea to refurbish and either sell or donate used office furniture could prove to be an excellent resource for both funds and jobs.

In 1997, with the completion of the \$1.4 million renovation, the Garden grounds were restored to its grandeur and generate income for REACH from rentals for weddings, receptions and other special events.

How has IFMA helped this organization?

Over the past years many individuals and organizations have come forward, donating time and products. The results have been tremendous.

Over 1,250 yards of carpet have been donated and installed, adding color and warmth to the halls of the Day Care Center, Administration Building and Auditorium. The security, roof, HVAC, and lighting systems have all been scrutinized by IFMA professionals who submitted reports on retrofit ideas to produce cost savings. And the list goes on...

Our May 20 meeting will be a beautiful celebration of all that has been accomplished including a tribute to those who have given of their time and efforts. Mark your calendars now and make reservations for what will truly be one of the best IFMA events ever. Enjoy lunch outdoors on the beautiful grounds, surrounded by lush greenery and flowers. Afterwards, we will tour the facility and learn about what one small idea has generated to help so many.

Hope to see you there. Reservations are being accepted now to guarantee a spot!

—Sonya G. Tablada, President, Facility Resources, Inc.

**FACILITY
RESOURCES
INCORPORATED**

*Providing solutions
for today's facility
management challenges*

1117 Perimeter Center West #N311 Atlanta, GA 30338
770.393.4700 • fri@facilityres.com

GIVING
YOU
A BRILLIANT ALTERNATIVE
TO
YOUR
LANDSCAPERS SAME OLD FLOWERS!
GUARANTEED!

Call Erin Mann today at
770-822-9706

color  burst
your seasonal flower contractor

Career Corner

Sharing the Wealth

After speaking with several professional members in the past few weeks, it has come to my attention that it would help if I published a few recruiters that specialize in placing facilities managers. I have compiled a list and here they are:

- **RCI (Rice Cohen International);** Jeff Cohen
tel: 215-321-4100 fax: 215-321-6370
- **Specialty Consultants;** Paul Lewis
tel: 412-355-8200 fax: 412-355-0498
- **Huntington Partners, Inc.;** Lisa Knupp
tel: 412-864-1600 fax: 412-864-0818

I hope these help. As you know, I am a one man committee and I can only do so much. Please be assured that when positions are brought to my attention I send all the résumés I have in my file and let the hiring body sort them out. Remember, always try to differentiate yourself. People want to hire people that will catapult their companies to a higher level,... "bring something to the table."

—Marty Mason, *Career Services Chair*

TVS interiors

interior design
facilities management

2700 Promenade Two
1230 Peachtree Street, N.E.

Atlanta, GA 30309-3591

Phone: 404/888-6600 Fax: 404/888-6700



Are your floor plans up to date? Probably not.

Perhaps your plans only reflect your last big renovation. Now you are facing another big move.

CCG can help. We'll bring your plans up to date and keep them current for you. Every week, month, quarter - you name it - you'll get as-built drawings or CAD files to use with your facilities staff, contractors and consultants. Even if you have no floor plans at all right now. We can save you thousands of hours of frustration and thousands of dollars in change orders and fees. Just ask us.

Call Judy Clements

404.876.0097 • jcc@ccg-llc.com

ASD®

Data, Voice and Fiber Optic Cabling Services

**Specialists in Company
Relocations & Expansions**

Certifications & Authorizations

BICS - RCDD
Symphony
Design

Bay Networks
Mod-Tap
Consulting

3Com
Siemon
CAD

*Warranties of 15 years and lifetime on
performance and workmanship*

770.740.2300 ext. 227

Ask for Jeff Kling, Account Manager

Everyone sits at a used desk. Why pay new prices?

You can purchase brand
name preowned furniture at
prices 80% less than new.



*Specializing in Herman Miller
and Steelcase office furniture.*

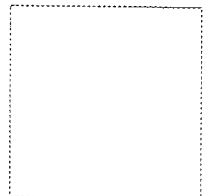
*NFL has Atlanta's largest
inventory of used workstations,
desk chairs and files.*

NATIONAL FURNITURE LIQUIDATORS

151 14TH STREET • SUITE 102 • ATLANTA, GEORGIA 30318
404.872.7280 • Fax 404.872.7044 • www.nflinc.com



International Facility Management Association
Atlanta Chapter
P.O. Box 43306
Atlanta, Georgia 30336-0306



DIRECTORY UPDATE

Note corrections to
mailing label at right
(include phone/fax
numbers).