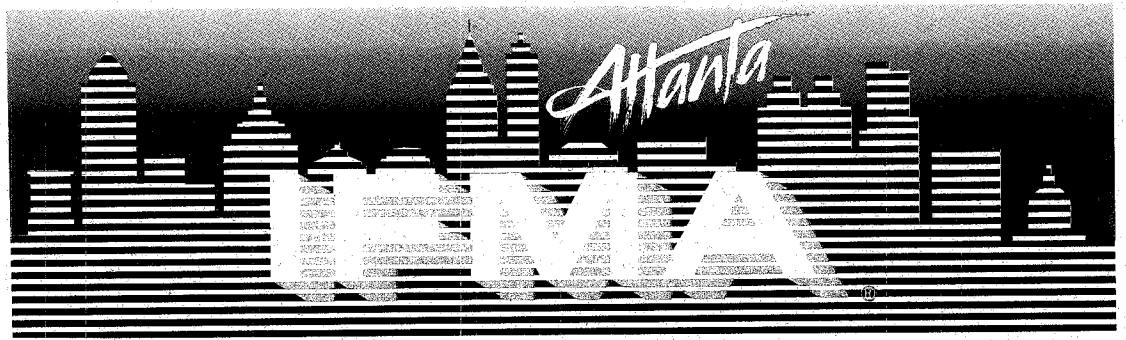


# International Facility Management Association



## Executive Board 1992

**President:**

**Kim Weiss**

*Long, Aldridge & Norman*  
(404) 527-4045

**Vice President:**

**Tom Vernon**

*ADP*  
(404) 980-2640

**Secretary:**

**Pete Conlin**

*BellSouth Enterprises Inc.*  
(404) 249-4126

**Treasurer:**

**Margaret Sherrod**

*The Coca-Cola Company*  
(404) 676-6688

**Past President:**

**James Pelger**

*Rockwell Int'l Missile Systems*  
(404) 497-5613

**Regional Vice President:**

**Lanny Felder**

*Blue Cross/Blue Shield of  
Florida, Inc.*  
(904) 791-6756

**IFMA HOUSTON**

**INTERNATIONAL HEADQUARTERS**

1 Greenway Plaza, E.,  
14th Floor  
Houston, TX 77046  
(713) 623-4362  
(800) 359-4362

## AUGUST 1992

**Speaker:** Edmond P. Rondeau, AIA, CSI  
Principal, Rondeau & Associates

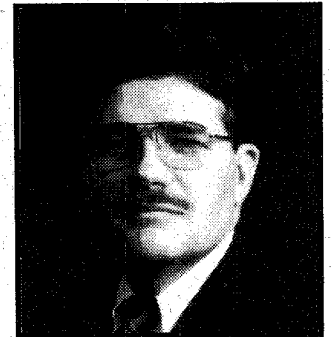
**Topic:** Corporate Real Estate:  
Opportunities For Facility Managers

**Date:** Wednesday, August 19, 1992  
Networking 11:30; Luncheon 12 Noon

**Location:** Merchandise Mart; Monte Carlo Room

**Fee:** \$20 Members; \$30 Nonmembers

**Reservations:** Barnett Business Services, 681-5344  
Call by August 14, 1992



Mr. Edmond P. Rondeau, AIA, CSI, is this month's speaker. His presentation will focus on corporate real estate issues and areas where facility managers can and should be active, knowledgeable and influential during the site selection and acquisition process.

Mr. Rondeau is a Principal with Rondeau & Associates, a corporate facility and real estate consulting firm based in Atlanta, Georgia. He provides corporate consulting services to corporate management supporting their business objectives in: corporate strategic planning, client representation, financial analysis, asset management and client education and research.

Previously, he served as Project Consultant for Contel Material Management Company and Manager of Corporate Real Estate for Contel Corporation where in addition to his real estate and facility management responsibilities he managed the development and implementation of a computerized

real estate management system to track Contel's 4,000 plus owned and leased properties.

His management experience also includes facility positions as Vice President of Property Management for the National Bank of Georgia, Vice President of Design and Construction, Director of Real Estate and Construction for Arby's Inc., Construction Manager for The Coca-Cola Company and Staff Architect for Auburn University.

In 1983, Mr. Rondeau served as the President of the IFMA Atlanta Chapter, was the 1988 President of IFMA and was the 1990 Chairman of the IFMA Foundation.

Mr. Rondeau received a Bachelor of Architecture Degree from Georgia Tech and an MBA in Real Estate from Georgia State University. He is a registered architect; holds a real estate sales license; is the author of "Principals of Corporate Real Estate", and coauthor of the real estate management information system known as LeaseKIT. □

## Greetings From The President



The Atlanta Chapter has been searching this year for an opportunity to put something back into the community. We think we have located a group that needs our resources and looks to be a good place to have the name of IFMA associated.

**YES!Atlanta** (Youth Experiencing Success) has recently moved into a space leased to them for \$1. They will be using the facility to house a minimum of general office space; the majority of the space will be used as work rooms for underprivileged inner city youths. These individuals will be given personal attention in various areas of learning skills and will be assisted with personal direction.

At present, the facility needs the following to help make the environment one where troubled youths can come and feel comfortable and welcomed: Carpet (approximately 1400 sq. ft. for 2 rooms), work tables, desks, chairs and portable partitions.

Please let **Robin Bruce** at 428-9072 know how you can help. We would like to respond to YES!Atlanta as soon as possible so we can pursue other avenues in assisting this project and explore others.

If you have other interests in the program, please read the section below from their brochure:

"We help kids rise above their hardships and circumstances by creating innovative working partnerships among youths, their parents, committed volunteers and existing youth service agencies. Our work is supported by the financial contributions of individuals, businesses, and foundations who see the possibility of a future for all of us - a future which need not resemble the past."

Thank you on behalf of the Executive Committee for your consideration. This facility renovation is one we can all be proud of. See you at the meeting.

*Kim*

KIM WEISS

## Quarterly Calendar

### AUGUST

- |       |                                                                           |             |
|-------|---------------------------------------------------------------------------|-------------|
| 19    | Chapter Luncheon<br>"Corporate Real Estate"                               | Atlanta     |
| 18-19 | IFMA "Facilities Planning to Support Telecommunications" (1-800-359-4362) | Kansas City |
| 20-21 | IFMA Facilities Planning (1-800-359-4362)                                 | Kansas City |
| 20    | BOMA - 8th Annual Trade Show                                              | Atlanta     |

### SEPTEMBER

- |       |                                                                        |                  |
|-------|------------------------------------------------------------------------|------------------|
| 16    | Chapter Luncheon<br>"Vendors Fair"<br>Merchandise Mart-<br>First Floor | Atlanta          |
| 15-16 | IFMA "Facilities Project Management" (1-800-359-4362)                  | Washington, D.C. |
| 17-18 | IFMA "Principles of Corporate Real Estate" (1-800-359-4362)            | Washington D.C.  |

### OCTOBER

- |     |                                                |             |
|-----|------------------------------------------------|-------------|
| 4-7 | IFMA '92 13th Annual Conference and Exposition | New Orleans |
| 21  | Chapter Luncheon                               | Atlanta     |

## Member Spotlight



IFMA member **Kathy Farley** has been Facility Manager at **King & Spalding** for the past four years. Working in a leased environment, Kathy strives for efficiency, primarily in the areas of security, life safety, recycling, housekeeping, and office relocations. Her previous background in retail provided a natural bridge to facilities management due to the emphasis on customer service and quality control.

Kathy manages a staff of six and is responsible for 269,000 square feet of space at 191 Peachtree Towers. She enjoys the diversity of her work and the constant activity. Her biggest challenge is to keep approximately 600 employees happy.

Kathy has been an IFMA member since 1989 and has recently been working closely with new members as part of the Membership Committee. Her advice to new IFMA members would be: "Be willing to get involved, you'll find that the more you put into this organization, the more you will receive from it."

Kathy hopes to be present at IFMA '92 in New Orleans.

## New Members

**Randy Borst**

- Melita International

**Dustin Camp**

- Confederation Life Insurance

**Greg Mikszan**

- Electro Painters, Inc.

**Margaret Riffel**

- Federal Reserve Bank

**David Scott**

- Emory University (Pediatric Care)

**Charlotte Branton**

- Zeliff & Wallace Corp.

## Affiliate/Allied Liaison

The IFMA Membership Committee has the solution if you are looking for visibility and recognition!

Become our Affiliate/Allied Liaison! This position reports to Judy Barber, Chairperson for the Membership Committee and works directly with the IFMA Board.

As Liaison, you will take an active part in the upcoming Vendor Fare. You'll be working with other IFMA members in organizing this event. Your input and ideas will be critical to the success of this function.

We need just the right person - someone who is a leader and will represent our important Affiliate/Allied members. You will become an integral part of the membership team.

If you have any interest in this position, please contact Judy Barber at 551-1829. She will be glad to answer any questions. □

## Vendors Fair

Come one, come all to the Atlanta Vendors Fair. The fair will be held on **September 16, 1992, 10:00 A.M. to 4:00 P.M.** at the **Merchandise Mart, first floor.**

The September meeting will be conducted as a fair, featuring 60 of our IFMA vendors displaying their products and services. The objective of the fair is to give all attendees a chance to meet other industry professionals (Atlanta area: designers, architects, facility managers and dealers) and view displayed products and services. It will be a chance to exchange ideas and have open discussions about our industry.

Invitations are being extended to surrounding IFMA chapters (Jacksonville, Florida, Columbus, Georgia, Nashville, Tennessee, Birmingham and Huntsville, Alabama), IBD, and BOMA. Attendees are welcome to bring guests (i.e., your boss or fellow associates).

In order to provide additional time to view the many vendor displays, a food concession will be set up by The Mart for the attendees to purchase lunch (deli selection).

Registration will close on August 8, 1992. A coordinating meeting will be held in mid August for registered vendors. Additional information will follow on this meeting. □

## July Meeting Recap

Carole A. Dortch, Commissioner of Administrative Services for the City of Atlanta, spoke at our July meeting and shared with us some of the trials and tribulations, as well as the triumphs, of her efforts to "manage" the city's facilities. According to Carole, it is probably even more difficult to address the issues of facility management in a government organization than in the private sector. With the "players" (i.e., elected officials) often changing and with so many citizens eager to give advice, effective facility management has been slow to evolve in Atlanta, as is the case in most cities. Staffing and training of facility management employees historically have been low priority issues for the city. It has taken major projects (such as new City Hall) to get the attention that facility management deserves.

Most long-term facility managers can probably relate to Carole's frustration in trying to overcome the "housekeeping/maintenance" perception of facility management. But the effort to develop a program of policies and procedures to protect an organization's investment in facilities and to strive for long-term planning and funding has a long way to go even in most of corporate America! Carole has made great strides with the City of Atlanta.

Facility management programs do belong and should continue to evolve in government organizations.

Many of the people who are involved with facility management in their daily jobs or, observant of its benefits, in the private sector, are voters who do care what government does with their money. Take heart Carole, and do keep up your efforts. □

## Shaw Industries, Inc.

John Rearden has agreed to sponsor the IFMA Atlanta Chapter item for Silence is Golden at IFMA '92 in New Orleans. John will also represent Networx at IFMA '92.

John Rearden is Vice President of Networx, a division of Shaw Industries, Inc. Their mailing address is Post Office Box 429, Cartersville, Georgia 30120. Phone number 404, 387-8839, Facsimile number 404, 387-8846. □

## Notes of Interest

Those interested in volunteering or participating with **Yes!Atlanta**, please call them at **874-6996** (955 Spring Street). They can provide you with a breakdown of funds, lists of directors, corporate and foundation donors, newsletters, and information on The Rising Star Program which is the actual youth program. "Rising Star serves youths who genuinely want to alter the direction of their lives."

The Executive Committee has selected Pete Conlin, Tom Vernon and Kim Weiss to be the voting delegates for the Chapter at the International Conference in October. Agenda items for discussion at the House of Delegates' meeting must be submitted to the Executive Director, Dennis L. Longworth, on Chapter stationery no later than Friday, September 4, 1992. Anyone with any items they would like to put on the table is welcome to attend the August Board Meeting on Monday, August 24th, as well as present the information to one of the officers in writing beforehand. Your input is always asked for and welcomed. It was noted that Administrative items will be addressed separately. It is also helpful to provide any support documentation you can to support your issue. If you have questions on types of items appropriate for inclusion, please contact any officer, as well as any past officer. □

# BOMA 8th Annual Trade Show

IFMA Members are invited to attend the 8th Annual "Great Way to End the Summer" Trade Show sponsored by Building Owners and Managers of Atlanta.

**When:** Thursday, August 20, 1992

**Where:** NationsBank Building, 26th Floor  
600 Peachtree Street, Atlanta

**Time:** 2:00 until 7:00 p.m.

There is no admission charge. Parking is available in the underground decks below the building.

This one hundred booth show will spotlight products and services from a variety of local and national companies. This opportunity to meet and talk with knowledgeable sales and service representatives annually draws about 1,000 property and facility management personnel.

In addition to the exhibits, IFMA members will enjoy visiting the new NationsBank Building. Door prizes, snacks and good information will be available. Come and join excitement.

## Employees with Reading Problems

What to look for in the employee:

1. Is a loner
2. Agrees with coworkers in group discussions
3. Avoids one-on-one meetings
4. Declines options on written material
5. Avoids additional responsibilities

If you think you may have employees with reading problems, contact Literacy Volunteers of America for more information at 404, 239-9104.

## Congratulations

Margaret Sherrod is this month's winner of the free luncheon which is donated monthly by Jaime Lanier at Interface Flooring Systems.

## Thanks To...

Wegman Associates, Inc. for the photographs from the 10th Anniversary Dinner. Be sure to pick up extra photographs at the next IFMA meeting.

## Atlanta Committee Chairpersons

**Awards:** Dorothy Harris  
Contract Interior Consultant  
461-2805

**Education:** Attila Szekes  
Facility Management Consultant  
565-1445

### Membership:

**Existing:** Judy Barber  
GTE Data Services  
551-1829  
FAX: 551-1450

**Hospitality:** Gene Meany  
552-7095

**Prospective:** Kathy Brackett  
676-6189

**New:** Kathy Farley  
572-4934

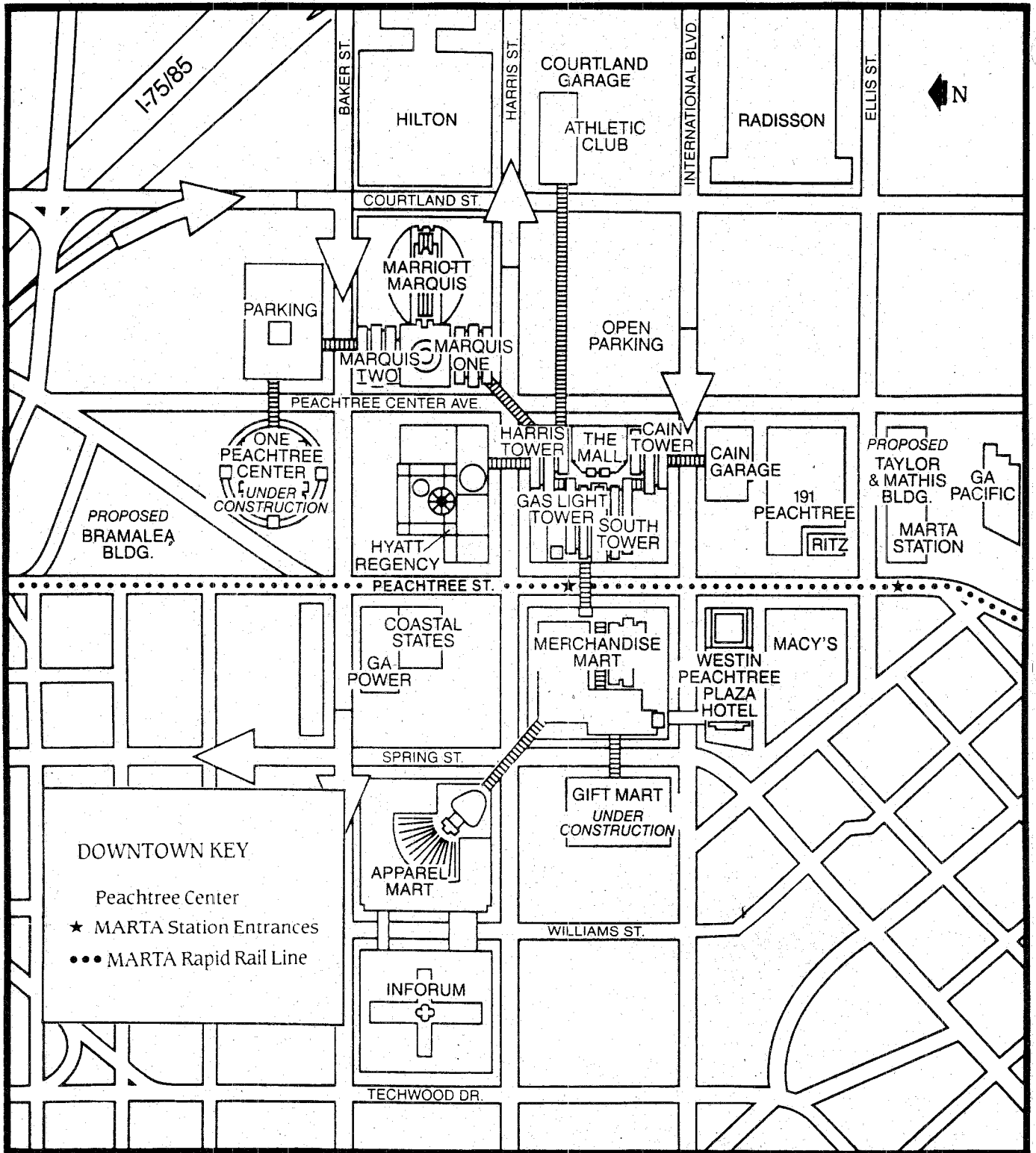
**Allied/  
Affiliated:** Position to be filled

**Newsletter:** Haidee Courson  
Wegman Associates, Inc.  
368-0101  
FAX: 263-9574

**Nominating:** Jim Pelger  
(see Executive Board)

**Programs:** Monica Stein  
Pointe Services, Inc.  
612-1247  
FAX: 612-1475

**Public  
Relations:** Robin Bruce  
Electrostatic On-Site Services  
952-7602  
FAX: 952-7642



Parking for Peachtree Center tenants and guests is available:

- in the Cain, Courtland and Inforum garages
- within the open lots at Peachtree Center Avenue and Harris Street
- beneath South, Gas Light, Harris, and the Marquis One and Two towers (limited)

BEER AND  
SOFT DRINKS

**ADMIT ONE TO THE  
8TH ANNUAL**

SNACKS

**BOMA'S GREAT-WAY-TO-END-THE-SUMMER  
SUPPLIER EXHIBIT**

**NationsBank Plaza  
600 Peachtree Street, N.E.**

**Thursday  
August 20, 1992  
2:00 - 7:00 p.m.**

**ALL REAL ESTATE MANAGEMENT PERSONNEL ARE INVITED  
(ATTENDANCE IS NOT LIMITED TO BOMA MEMBERS)**

EXHIBITS

DOOR PRIZES