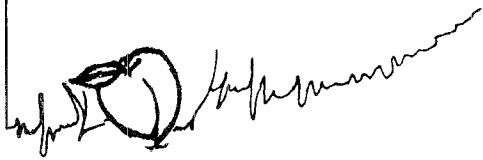


ATLANTA NEWSLETTER

December, 1990



Message from Martha: Your President Is Emotional



Well, gang.....My year is over and I made it! I am sure some of you thought I would never come up with twelve pieces of P.I.E. I face this month with mixed emotions. The presidency takes a lot of time and energy, and from that stand point, I am ready to pass the gavel on to Jim; but that very time and

energy creates a strong proprietorial tie to the people serving, the on-going programs inherited, the new "baby" programs that were begun this year, and the chapter in general. The outgoing president has to trust the incoming president to continue those ideas already begun and to continue new and better ways to make the chapter grow.

My major thrust this year has been to get more of you involved. I think we have been successful. We see lots of you working for the chapter, participating in the networking meetings, the social events, and the various committees. Attendance at the monthly meetings has been increasing.

Jim inherits a wonderful group of people who respond to calls for help. Thank you all for your support this year. I am sincerely honored that you entrusted me with the welfare and leadership of the chapter. It has been a wonderful time for me. I have made lots of wonderful new friends; and because I love you all, I look forward to continuing my participation in an advisory capacity.

Each of the pieces of the P.I.E. has encouraged active participation...so, jump in; volunteer, keep up the good work and Have A Piece of the P.I.E. ■

December 19th Luncheon

Our December 19th luncheon at the JW Marriott at Lenox (formerly Westin Lenox) will be our first annual awards meeting. Four awards will be given:

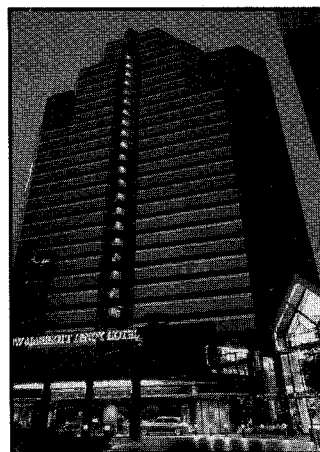
1. Overall Achievement in Facility Management
2. Project Achievement in Facility Management
3. Outstanding Allied Member
4. Outstanding Affiliate Member

This festive holiday luncheon is for all IFMA Atlanta members and their bosses. It will be a great time to show your boss what your association is doing for you and your company's bottom line.

Lunch will start at 11:45 a.m. with registration and networking starting at 11:15 a.m. Reservations for lunch must be made by calling Barnett Business Services at 681-5344 no later than Friday, December

14th. The cost is \$15 for members and \$20 for guests. We will not be able to invoice you for the meetings attended, so please come prepared to pay at the door by check or correct dollar amount. In accordance with IFMA policy, no-shows will be invoiced.

Come help us celebrate the holidays and recognize the outstanding achievers in our midst! ■



JW Marriott Lenox Hotel
3300 Lenox Road
Atlanta, Georgia 30326

Seasons Greetings

November Meeting Recap



Martha Osborne, Beverly Bondarew, and Douglas Maine before the meeting.

Mr. Douglas Maine, President of the Southeast Division of MCI Telecommunications, was the guest speaker on November 14, 1990, at the Hyatt Ravinia Hotel in Dunwoody at a combined meeting of IFMA, the Institute of Business Designers (IBD), American

Institute of Architects (AIA), and the American Society of Interior Designers (ASID).

Mr. Maine spoke on *Trends in Telecommunications and the Impact on the Office of the Future*. We were enlightened on how close we are to the "Dick Tracy - Buck Rogers" era.

In addition, MCI presented the Atlanta IFMA chapter with a check in the amount of \$1,000 for the IFMA Foundation for a college scholarship for facilities management education.

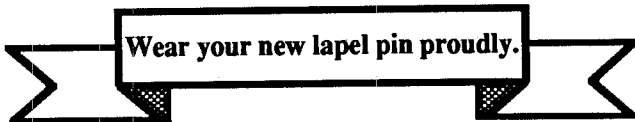
Thanks to MCI and especially Mr. Maine for the outstanding presentation and for the generous contribution. ■

Fact City...

The 15 largest states in population, according to preliminary figures from the 1990 Census:

California	29,279,015
New York	17,626,586
Texas	16,824,665
Florida	12,774,603
Pennsylvania	11,764,434
Illinois	11,325,247
Ohio	10,777,514
Michigan	9,179,661
New Jersey	7,617,418
North Carolina	6,552,927
Georgia	6,386,948
Virginia	6,127,680
Massachusetts	5,928,331
Indiana	5,498,725
Missouri	5,079,385

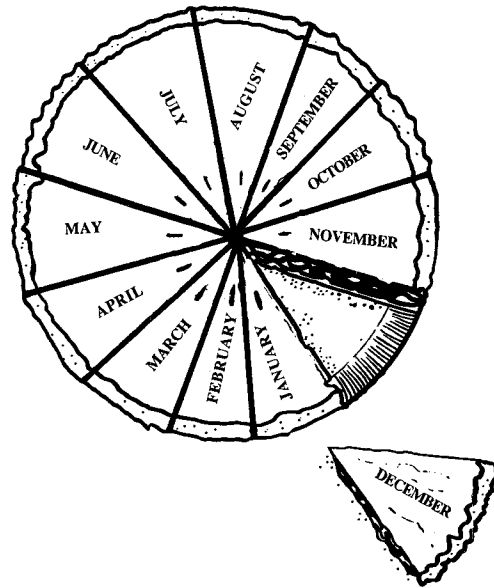
Source: U.S. Census Bureau
From Business Facilities/October 1990



IFMA PIE:

January - Participation Is Essential
 February - Participation Is Educational
 March - Promote IFMA Enthusiastically
 April - Personalize IFMA's Ethics
 May - Profession In Evolution
 June - Professionalism In Evidence
 July - Plan IFMA Early
 August - Progress Involves Everyone
 September - Pride...Initiative...Energy
 October - Peaches...In...Evidence
 November - Pick (an) IFMA Endeavor
 December - Your President Is Emotional

HAVE A PIECE OF



THE IFMA P.I.E.



Welcome New Members

Please give a warm IFMA welcome to our new members for November:

- Clyde Watts, Pitney Bowes
- David Millet, IBM
- Erwin Pichay, Army & Air Force Exchange

Tips, Topics and Tidbits from Conference

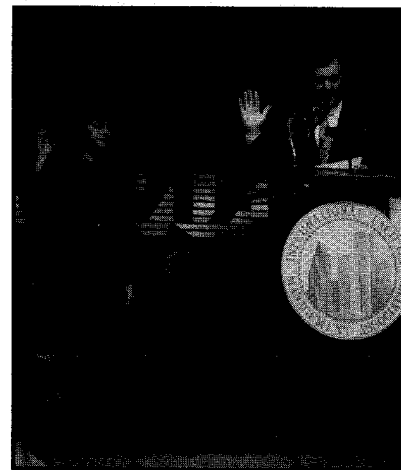
IFMA '90 Baltimore Reported by Martha

- * Delegates meeting brought out information concerning certification and grandfathering. Presently, National expects that a current, professional Facility Manager would go through the process up to the exam, but not have to take the exam to be entitled a "certified F.M."
- * The facility budget is usually 10-25% of the operating budget for a corporation.
- * What to expect of industry in the 90's: Our industrialized nation is moving toward an informationalized business. A new generation of businesses will be built around information based activities. This requires no inventory. We will have customized mass-produced goods. 50% of the revenues from a company will be information-based.
- * Facility management is not just engineering and technology, but includes behavioral science.
- * People don't care how much you know until they know how much you care.
- * Martha got picked up the first night.
- * Jim invited women to his room to "see his tie collection and his fabulous view."
- * Dorothy Harris backed her rental car into a concrete post.
- * Jean was crabby because she couldn't find food - only "crab souvenirs" in her hospitality basket.
- * Dorothy and Elliot were an item Mon. and Tues.
- * Kim left the party early - she Says she had relatives coming.
- * Martha and Jim were caught by Vince Vance and put into a twist contest.
- * "Rockin' Jimmy from Atlanta" looked very familiar air-playing the guitar on stage. *And this is our leadership for next year?*
- * Jean's new theme song is *I Could Have Danced All Night*.
- * Shirley's new motto - "Well, you just have to go and ask them to dance."
- * Judy and Martha swear that Phil from Philadelphia was really an octopus in disguise.
- * Old fashioned Judy waited to be asked, and she was asked, and asked, and asked. What a fun awards banquet.

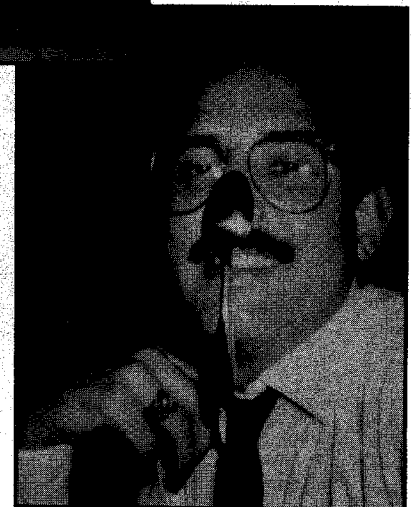
- * Pete and Lyle made a stunning couple at the banquet. Gorgeous dress, Lyle!
- * Peach buttons were in evidence everywhere. I don't think there was anyone at conference who hadn't been *Peached*.
- * 2,832 people attended conference - up 25% over last year. This does not include exhibitors.
- * We now have 90 chapters, 9500 members, and 95 sustaining corporate members.
- * A California bumper sticker shared with delegates in Baltimore: *Tomorrow is a vision. Yesterday is but a memory, but today is a real bitch.*
- * "Use the latest technology available to do what it is you do, and in the process your business changes."
- * A good mission statement for facility managers is "Underpromise-overdeliver."
- * "Hire, train, reward - your people."
- * Communication equals bottom line savings.

Plan now to attend next year - San Diego! ■

IFMA '90 Highlights



Christine Neldon being sworn in as National President.



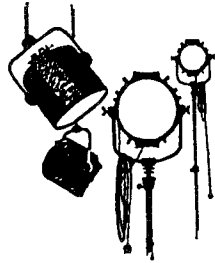
Atlanta Chapter's talented V.P. We won't mention any names.

Member Spotlight Martha Lee Osborne

Our president for 1990, Martha Osborne, has numerous and varied interests. Professionally, she is the Facility Manager at DCA where she has held this position for the past six years. As most of us, she "grew into the job" getting OJT and taking courses whenever and wherever she could. She has been a member of IFMA since 1985. She is also a founding director for Women In Networking (WIN) for North Georgia, a member of NAFE, and runs her own business, The Facility Department, Inc., offering contract Facility Management. She appears in Who's Who in U.S. Executives, Who's Who in American Women, Who's Who in Best Run Businesses, and in The American Biographical Society's 2000 Most Important American Women. Prior to becoming a Facility Manager, she taught secondary English and music for seventeen years.

Right now, she is totally involved with her community. "Christmas-on-the-Square," which she established in Cumming four years ago, begins Thanksgiving weekend and goes each weekend 'til Christmas. This involves arranging for a community tree, and performances on the Courthouse steps each Saturday. Also, as director of the Cumming Chorale, a community singing group of 45 adults, she is busy getting ready for their Christmas Concert to be held on December 6 and 8.

Since she didn't have anything else to do, she also decided to run for a seat on the Cumming City Council. Elections are December 4th, so campaigning is on her agenda right now. She is a member of the Cum-

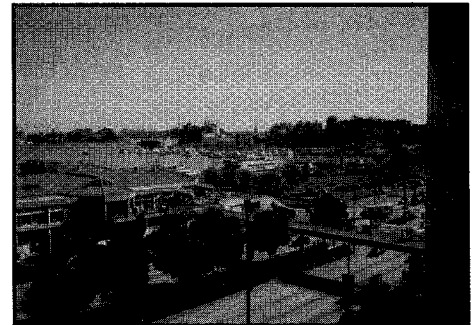


ming-Forsyth County Chamber of Commerce and the Sawnee Association of the Arts. She also sings for the Cumming United Methodist Church and solos for various civic groups.

She says her hobbies (Who has time for hobbies?) include woodworking, reading, going to the theater, and doing things with her three children and their spouses and her one granddaughter who, according to Martha, is the cutest and smartest child in the land. She holds a private pilot's license of which she is very proud, but is not current right now. She says she doesn't have the time to fly. We wonder why. She is pleased that she has lost 70 pounds since last November, and she also says she's single, and loves to dance. Any takers? ■

More Highlights from IFMA '90

*The view from
hotel window -
Jim's window,
that is!*



*Kim Weiss,
Jim Pelger,
and Shirley
Duncan at
the Awards
Banquet.*



Your fearless leader at the helm.

And More Highlights from IFMA '90



*Elliott Stern, Jean Lusso, and Jim Pelger.
What are they doing?*

1990 Patrons



Allied Fibers - Diamond
**MCI Communications -
Diamond**

Armstrong - Gold
Kimball International - Gold

Dupont Flooring Systems - Silver
Bentley Mills - Silver

Baker Furniture - Bronze
Corporate Environments of Georgia - Bronze
Key Wallcovering, Inc. - Bronze

(more names needed)
Call Margaret Sherrod, 676-6688

Upcoming Events

December Meeting and Awards Luncheon

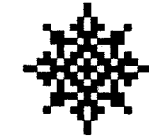
Date: Wednesday
December 19, 1990
Time: 11:45 a.m.
Place: JW Marriott at Lenox
(formerly the Westin
Lenox)



Join us for our gala Christmas meeting and Awards Luncheon scheduled for December 19 at 11:45 a.m. at the JW Marriott at Lenox. This festive event is for all IFMA Atlanta members and their bosses. Mark this date on your calendar and your employer's calendar.

January Networking Session

Date: January 8, 1991
Time: 6:00 - 7:30 p.m.
Place: Terrace Garden Inn



The January Networking Session will be held on Tuesday, January 8, 1991, at the Terrace Garden Inn on Lenox Road from 6:00 - 7:30 p.m. Please check the meeting announcement board in the front lobby for exact location.

This session will be open to all members of IFMA and the topic for discussion will be "RELOCATION." A cash bar will be available.

For further information, call Sharon Beusse Challis at 448-0203.

January Meeting

Date: Wednesday
January 16, 1991
Time: 11:45 a.m.
Place: Trio Restaurant



At our January 16th luncheon meeting Temme Barkin of Barkin-Leeds, Ltd. will start off our new year with an informative program, "How to plan for, procure, and protect artwork in your facility." Put this meeting on your 1991 calendar today!

February Social

If all goes well, we will enjoy an evening at Agatha's *A Taste of Mystery Dinner Theatre* in February. While having dinner we will be a part of an Agatha Christy mystery in progress - a fun way to socialize with your fellow IFMA members. We'll keep you informed as we firm up the details. ■

IFMA Executive Committee

- President:** James Pelger, Rockwell Int'l. Missile
497-5613
- Vice President:** Kim Weiss, Long, Aldridge and
Norman
527-4045
- Secretary:** Tommy Vernon, ADP
980-2640
- Treasurer:** Howard Chapman, Atlanta Legal Copies
688-2222
- Past President:** Martha Osborne, DCA
442-4004
- Regional Vice President:** Jean Lusso, The Coca Cola Company
676-4053
- Atlanta Chapter:** P.O. Box 133, 1579-F Monroe Dr., NE
Atlanta, Georgia 30324
- Secretarial Service:** Barnett Business Services
P.O. Box 755, Cumming, GA 30130
Atl. #: 681-5344
- IFMA (Houston):** 713-623-4362

IFMA Chairpersons

- Awards:** Dorothy C. Harris, Rosser Fabrap Int'l
688-3596
- Education:** Brian McCue, Confederation Life Ins.
859-3999
- Historian/Public Relations:** Polly Harper, Wm. Leonard & Co.
252-9700
- Job Bank:** John Steffes, Northern Telecom, Inc.
661-5350
- Membership:** Judy Barber, Contel
551-1829
- Networking:** Sharon Beusse Challis, Contren
448-0203
- Newsletter:** Martha Osborne, DCA
442-4004
- Nominating:** Martha Osborne, DCA
442-4004
- Programs:** Jaime Lanier, Interface Flooring
956-8660
- Social Events:** Kim Harden, Baker, Knapp and Tubbs
266-0501
- Sponsors:** Margaret Sherrod, Coca Cola USA
676-6688
- Research Liaison:** Alyce Zahniser, MARTA
848-5538

Calendar of Events

December

- Tues., December 11** Networking Session
6:00 p.m.
Terrace Garden Inn
All Members
- Wed., December 19** Christmas Luncheon
11:45 a.m.
JW Marriott at Lenox
(formerly Westin Lenox)

January 1991

- Tues., January 8** Networking Session
6:00 p.m.
Terrace Garden Inn
All Members
- Wed., January 16** Luncheon
11:45 a.m.
Trio Restaurant
Temme Barkin of Barkin
Leeds, Ltd. - *How to
plan for, procure & protect
artwork in your facility.*

February 1991

- Wed., February 20** Luncheon
Connie Smith of Smith
Image Associates

March 1991

- Wed., March 20** Luncheon
Pete Conlin of Bell South
Enterprises

Food for Thought

I find the great thing in this world is, not so much where we stand, as in what direction we are moving. Goethe

Networking News

William Broome with Arthur Andersen has become a member of the Networking Committee. Welcome William!!

Check the February newsletter for the 1991 calendar of networking events. If you have suggestions or comments regarding our networking endeavor, please feel free to call Sharon Challis or William Broome. ■

Information Changes

If you have a change in your name, address, phone number, etc., call Judy Barber at 551-1829, and she will pass the information on to the appropriate parties. ■