

ATLANTA CHAPTER - OCTOBER NEWSLETTER

The Atlanta Chapter of IBD and IFMA invite you to join us for a festive evening at one of Atlanta's highest profile spaces – the 50th floor of the IBM Tower.

Thursday, October 19, 1989

5:30 - 8:30 p.m.

*Hors d'oeuvres - cash bar
music and dancing*

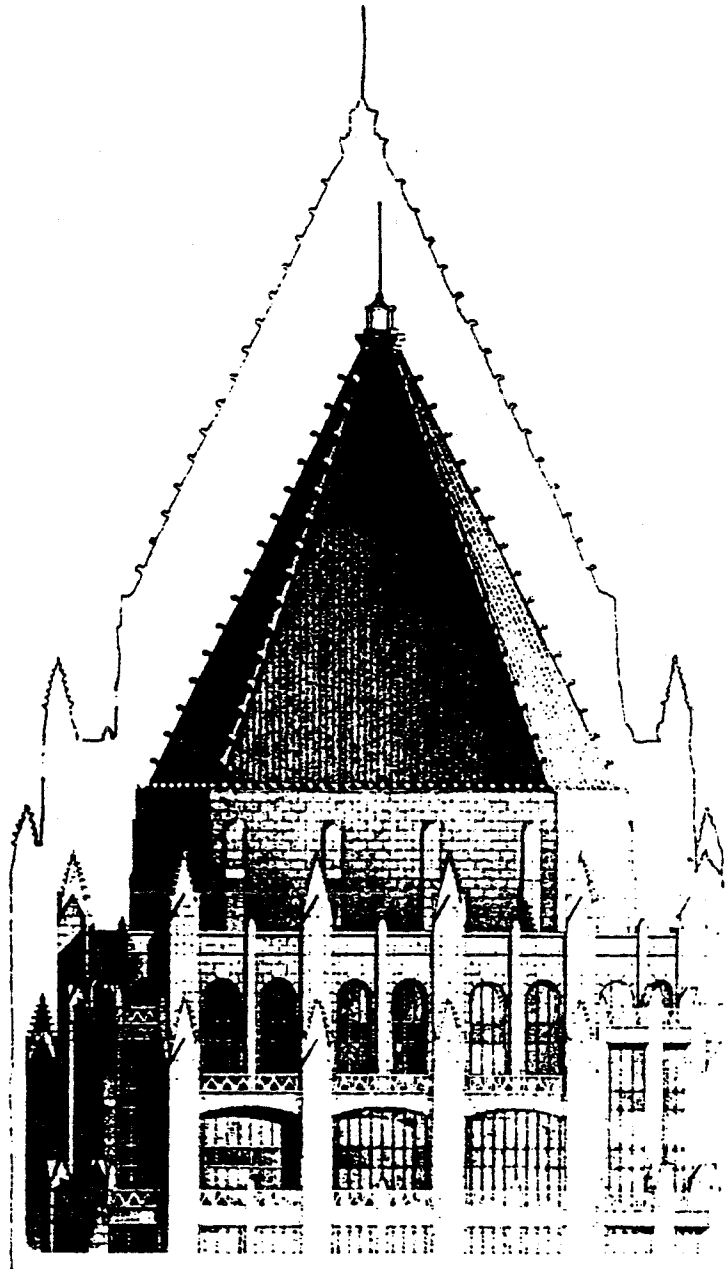
Members: \$10.00

Non-Members: \$15.00

Attendance limited to 225 persons

A brief program regarding the project development will be presented at 5:45 p.m. on the 36th floor Marketing Center.

Reservations for the October Social must be made no later than Friday, October 13th, by calling Noble Data Systems at 233-1777. The cost for members is \$10, for non-members, \$15. Payment at the door by check or correct change will be appreciated. Please make your reservations early. No-shows will be invoiced.



<p style="text-align: center;">ATTENTION Professional, Associate and Lifetime Members:</p> <p><i>Have you voted on the proposed amendments to the Association's Constitution and Bylaws? These proposed amendments to the Association's Constitution and Bylaws, sent to all members qualified to vote earlier this year, did not receive the required ballot response of 50% of the qualified membership. While 1,213 ballots were received for tabulation, a 2,290 ballot response would have been necessary for a qualified vote. 99% of the 1,123 ballots returned were affirmative.</i></p> <p><i>The Board of Directors has voted to return the proposed amendments and clarifications to the qualified voting membership for a new vote.</i></p> <p><i>The IFMA Board of Directors encourages each qualified member to exercise your voting rights and return the ballot that was sent to you on September 5, 1989. Your vote <u>does</u> count; a non-returned ballot is tabulated as a rejection vote. Your vote must be mailed or faxed no later than October 20, 1989.</i></p> <p style="text-align: center;">PLEASE VOTE!</p>	<p><i>Please note the following dates on your calendar for future IFMA events in Atlanta:</i></p> <p>Wednesday, November 15 Luncheon - 11:45 a.m. Atlanta Merchandise Mart</p> <p>Wednesday, December 13 Luncheon - 11:45 a.m. Westin Lenox</p> <p style="text-align: center;"><u>ANNUAL CONFERENCE</u></p> <p>We hope to see many of you at the 10th Annual Conference in Seattle, October 29-November 1. The Atlanta Chapter delegates will be John Steffes, Martha Osborne and Jean Lusso.</p> <p style="text-align: center;"><u>JOB BANK</u></p> <p>Please call John Steffes at 395-5350 to match available facilities-related jobs and candidates.</p> <p style="text-align: center;"><u>PROGRAMS FOR 1990</u></p> <p>What programs would you like your IFMA chapter to have in the coming year? If you have a suggestion for a specific topic or even a general recommendation, please communicate your thoughts to Martha Osborne, Programs Chairperson.</p>	<p style="text-align: center;"><u>Member</u></p> <p style="text-align: center;"><u>Get-a-Member Challenge</u></p> <p>How does a three-day, all-expenses-paid vacation for two in New Orleans sound? Or how about a 25" color TV, a remote control VCR or a cordless telephone? These are all prizes in the Member-Get-A-Member Challenge. They are individual prizes, but the Chapter can also participate.</p> <p>Any chapter bringing in 10 new Professional members receives one free registration to any 1990 IFMA event, including the conference.</p> <p>20 members = 2 free registrations, 30 for three, etc. All members may participate, but only new Professional or Associate members may be credited to a sponsor's total.</p> <p>All members who sponsor at least one new Professional member will receive a New Orleans T-shirt and recognition in IFMA news.</p>
---	--	---

Please join us at the October Social!

Chestley L. Yelton
President, Atlanta Chapter

Martha Osborne, Vice President
Kim Weiss, Secretary and Membership Chairperson
Judy Barber, Treasurer
John Steffes, Job Bank Chairperson
Lillian Dever, Newsletter