

EMPOWERING Atlanta through CHANGE



**2015-2016
Annual Report**

**INSIDE
this issue:**

Community Service
Professional Development

2015-2016 IFMA Atlanta Annual Report

On the Corner of **Growth and Inspiration**





Mission

The Atlanta Chapter of IFMA is the premier, focused resource for professional development and innovative solutions in strategic facility management.

Purpose

Support a community that fosters vitality, momentum and impact for the facility management professional and associate members.

Objective

- Provide and engage Chapter members with opportunities that expand their professional growth, build business relationships and advance their career paths.
- Inspire passion for the facility management profession that compels and engages facility practitioners to join and participate in the IFMA network, offers unique value with that participation and attracts volunteer leaders.
- Sustain Atlanta Chapter of IFMA's financial integrity to achieve and fulfill our mission.



2015-2016 IFMA Atlanta Annual Report

Dear Members,

New to the industry in my first facility-related career out of college, I joined this exceptional organization in 2007. After being “coerced” by Joanne Cole to join the membership committee, I soon found myself chairing the committee. Time has flown by and now I have joined the esteemed group of past presidents of the Atlanta Chapter of IFMA – a group of individuals so accomplished I feel lucky to be considered one of them. Our Chapter presidents have gone on to be IFMA Chairs, published authors & award-winning recipients. I had no idea that our Chapter was so well-respected & accomplished until a July 2016 visit to the IFMA Headquarters. The IFMA staff was raving about how we are one of the top performing chapters in this global organization. From 1981 – 2016, our Chapter has been celebrating successes for 35 years thanks to members like you.

2015/2016 was a year of transition and change – the start of the evolution of our chapter. We tried a few new things but one thing that will never change is our members – you are the best in the world! The achievements of 2015/2016 were made possible by all of you, our members, and the extraordinary leadership and dedication of the board members, committee chairs & AHQI staff. I can’t thank you enough for your time, extraordinary work ethic and passion to keeping this chapter the best in the world and your commitment to making it even better.

Our chapter held several exceptional programs in 2015/2016, most of which are highlighted in this annual report. While each of the events were a success, one of them is especially noteworthy: The Spring Classic.

For almost 20 years the charitable Spring Classic has been an integral part of our chapter’s fundraising efforts. In 2015/2016 we decided to change one small aspect of the event, the location, and we experienced our most successful Spring Classic to-date, raising over \$20,000. This outstanding event, along with many others held during 2015/2016, was made possible thanks to each of you.

I hope you enjoy this annual report and I trust it makes you smile when you think about some of the great times and positive outcomes from 2015/2016. As you think about the past, don’t forget about the future. As we look to the future of IFMA Atlanta and what the coming years have in store, let’s not forget that our past has led us to where we are today and it’s what will lead us to our future. Many thanks to each of you for a successful year!

Sincerely,

Christy Lowell

President, 2015-2016



2015-2016 IFMA Atlanta Annual Report

Executive Committee



Christy Lowell
President



Mabelle Pellegrini
Vice President,
President Elect



Pete Van Cleave
Vice President,
Communications



Joe Pearson
Chapter Secretary



Anthony Maddox
Chapter Treasurer



Joseph Geierman
Past President

Committee Chairs

Stephen Harvey
Membership

Frank Abraham
Alison Dawson
Associates Special Events

Haydn Fusia
Community Services

Dee Raya
Wendy Cowart
IFMA Foundation Scholarships

Christy Jellets
Sustaining Patrons

Heather Phillips
Programs

Joanne Cole
Education

Brandi Williams
Sustainability

Ken Stephenson
Accredited Degree Program

Steve Christopher
Golf/Tennis Classic

Kathy Roper
GCN Liaison

Harriet Whelihan
Joanne Cole
Credentialing/CEU

Joe Carroll
Career Management

Tom Haslach
Tours



2015-2016 IFMA Atlanta Annual Report

GOLD



SILVER



BRONZE



PATRONS

1electric
Choate Construction
Flood Brothers
Gensler

Humphries & Company
Maxair Mechanical
Steelcase
UPS



Grow and Engage Professional Members

- Evaluate Professional membership activity and participation; identify and implement ways to improve
- Develop “the next generation” of Professional Members (students)
- Communicate with members across multiple media formats

Provide Educational Opportunities for Professional Development

- Align the education we are providing with our Professional members’ needs
- Increase number of CFMs, SFPs and FMPs in the chapter
- Provide more opportunities for our Associate members to reach a broader range of Professionals

Provide Opportunities to Build Business Relationships

- Provide opportunities for Associate member companies to showcase their goods and services
- Engage Sustaining Patrons to take advantage of all program benefits

Collaborate with Strategic Professional Organizations

- Continue sustainability work with USGBC-Georgia and Better Building Challenge
- Continue to strengthen partnerships through Atlanta Workplace (IIDA, ASID, USGBC-Georgia)
- Continue to improve relationship with Georgia Center for Nonprofits; increase IFMA’s status within the non-profit world

Streamline and Communicate Administrative Processes

- Hold effective board meetings
- Develop, update and communicate Balanced Scorecard to membership and board
- Identify opportunities to streamline processes

Create Opportunities for Personal and Professional Growth

- Engage a wider range of membership with chapter’s activities
- Ensure that there is a strong base of leadership to draw from for future boards

Maintain Viable Fiscal Position

- Committees should stay within (or under) budgets that were approved for the year
- Evaluate effects of luncheon price decrease on attendance
- Evaluate effects of membership dues increase on overall membership
- Continue to be a leading chapter in supporting IFMA Foundation



2015-2016 IFMA Atlanta Annual Report

NOVEMBER 18, 2015 - Maggiano's in Buckhead



Speaker Jonathan Bowman



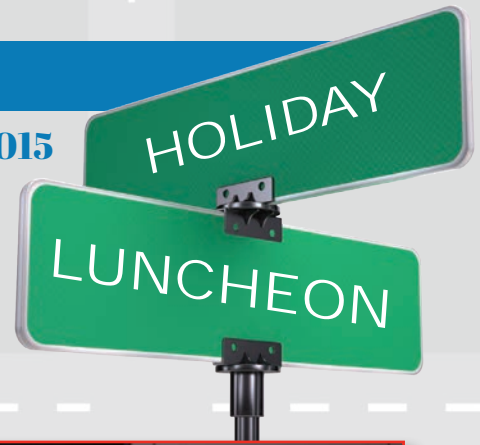
“People Power” within the community of Facility Manager professionals can serve as a basis for dynamic achievement.

The same principles that allow your professional network to lead you to great success, will allow you to lead others to achievement.

These leadership principles can be used in all facets of your work as a Facilities Manager professional.

2015-2016 IFMA Atlanta Annual Report

DECEMBER 2015



**2015 Harry L Ludwig, III
Community Services Award
David Privitera**



**2015 Achievement in
Facility Management Award
Aaron Davis**



**2015 Outstanding Associate Award
Jorge Pineyro**



**2015 Distinguished Member Award
Joanne Cole**



**2015 Martha Osborne CFM Award
Machelle Pellegrini**



**2015 Anchor Award
Edmond P. Rondeau**

SOCIAL MEDIA

ACADEMY

2015-2016 IFMA Atlanta Annual Report

FEBRUARY 17, 2016 - Full Circle Restoration



Speaker Ken Fehner

Even the most seasoned social media guru learned something new at this event.

In addition to networking, we learned how to engage employees and colleagues with social media. We also learned how to advance personal knowledge of Facebook, LinkedIn, Twitter, and YouTube to address real-world Facilities Managers issues with Social Media.

This program was approved for 0.3 IACET Continuing Education Units.



2015-2016 IFMA Atlanta Annual Report

MARCH 3, 2016 - The Painted Pin



An event for the ages! This after-hours event at The Painted Pin included bowling, classic games like bocce ball, shuffleboard, ping-pong, skee ball, darts, and southern skittles. Of course, there was no shortage of food and drink in a fabulous lounge setting. We will not soon forget this evening.



2015-2016 IFMA Atlanta Annual Report

MARCH 25, 2016 - Kimberly-Clark Headquarters



Showcasing the Kimberly-Clark Headquarters, buildings 100 & 200 in Roswell, GA.

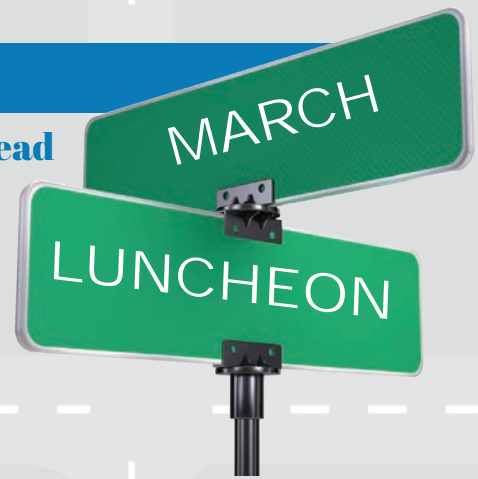
Building 100 was the first building in Roswell, and only one of three in Georgia, to receive LEED Platinum Certification.

Building 200 is the most recent renovation on campus and is also LEED Platinum.



2015-2016 IFMA Atlanta Annual Report

MARCH 16, 2016 - Maggiano's in Buckhead



Speaker Richard Hanson



Rainwater Harvesting for Commercial Buildings

Rainwater Harvesting is both thousands of years old, and yet new and experimental.

We learned how to create a design that is responsible, both environmentally and fiscally. Additionally, we learned the key design elements that help protect Earth's second-most precious resource, WATER, while providing annual ROI of 20% or more.

This program offered 0.1 CEUs by IACET





2015-2016 IFMA Atlanta Annual Report

APRIL 2016

The annual Spring Classic was held on April 20, 2016 at Chateau Elan Golf Club. This event was not only our biggest fundraiser of the year, but was also our most successful one yet! With proceeds benefiting the IFMA Foundation, our chapter netted over \$25,000 in profits...an astonishing achievement! In addition to golf, the Spring Classic featured a wine tour and tasting at the winery, networking at the hospitality villa and themed golf sponsorships on the course. To conclude the evening, attendees enjoyed great food, awards, raffle prizes and of course, friendship, at the Awards Dinner.

For nearly 20 years, Steve Christopher has chaired this event. This year being his last, what a way to go out on a high note! We thank you for your many years of hard work and dedication. Your passion for the Atlanta Chapter of IFMA is evident in all you do for our Chapter.



2015-2016 IFMA Atlanta Annual Report

APRIL 2016



2015-2016 IFMA Atlanta Annual Report

APRIL 2016



2015-2016 IFMA Atlanta Annual Report

APRIL 2016





2015-2016 IFMA Atlanta Annual Report

APRIL 29 & 30, 2016 - Lifestyle Building Center



Several volunteers, including Ga Tech & KSU students, participated in the 2-day event, an amazing increase of 200% more than last year!

Volunteers worked a total of 180 man hours on improving the 100-year old Lifecycle Building Center warehouse.

According to Shannon Goodman, Executive Director of the Lifecycle Building Center, "The level of commitment and enthusiasm these folks bring to their efforts is incredible and we were so thrilled to have their support executing improvement projects during their 2016 annual volunteer event."

2015-2016 IFMA Atlanta Annual Report

MAY 20, 2016



The tour featured an overview of the building restack, including the recent renovation of the lobby, office floors and conference center.



2015-2016 IFMA Atlanta Annual Report

MAY 2016



2015-2016 IFMA Atlanta Annual Report

JUNE 30, 2016 - Maggiano's at Perimeter



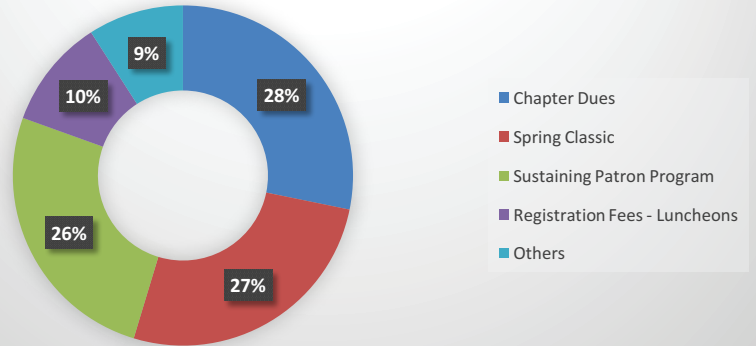
In addition to great networking, attendees met the new Board of Directors, witnessed the swearing-in ceremony & learned what the Board had planned for the upcoming year.

Our non-profit partners were recognized for their participation in our 2015/2016 Community Services program.

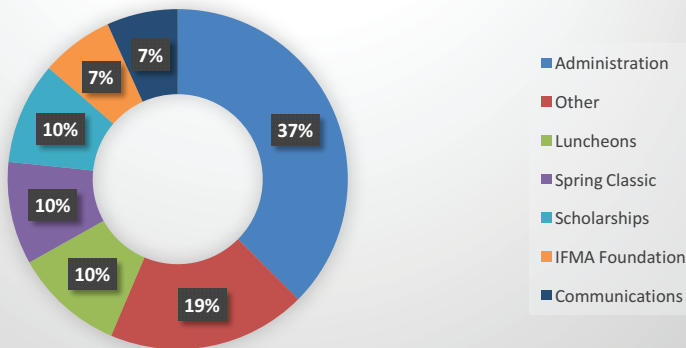


2015-2016 IFMA Atlanta Annual Report

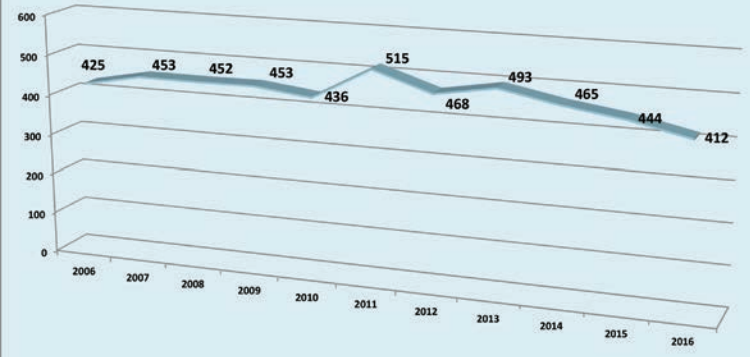
2015/2016 Revenue Budget



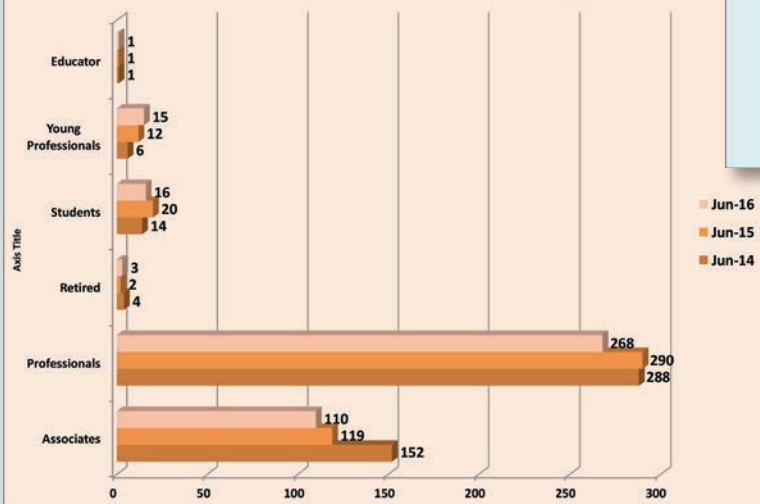
2015/2016 Expenses



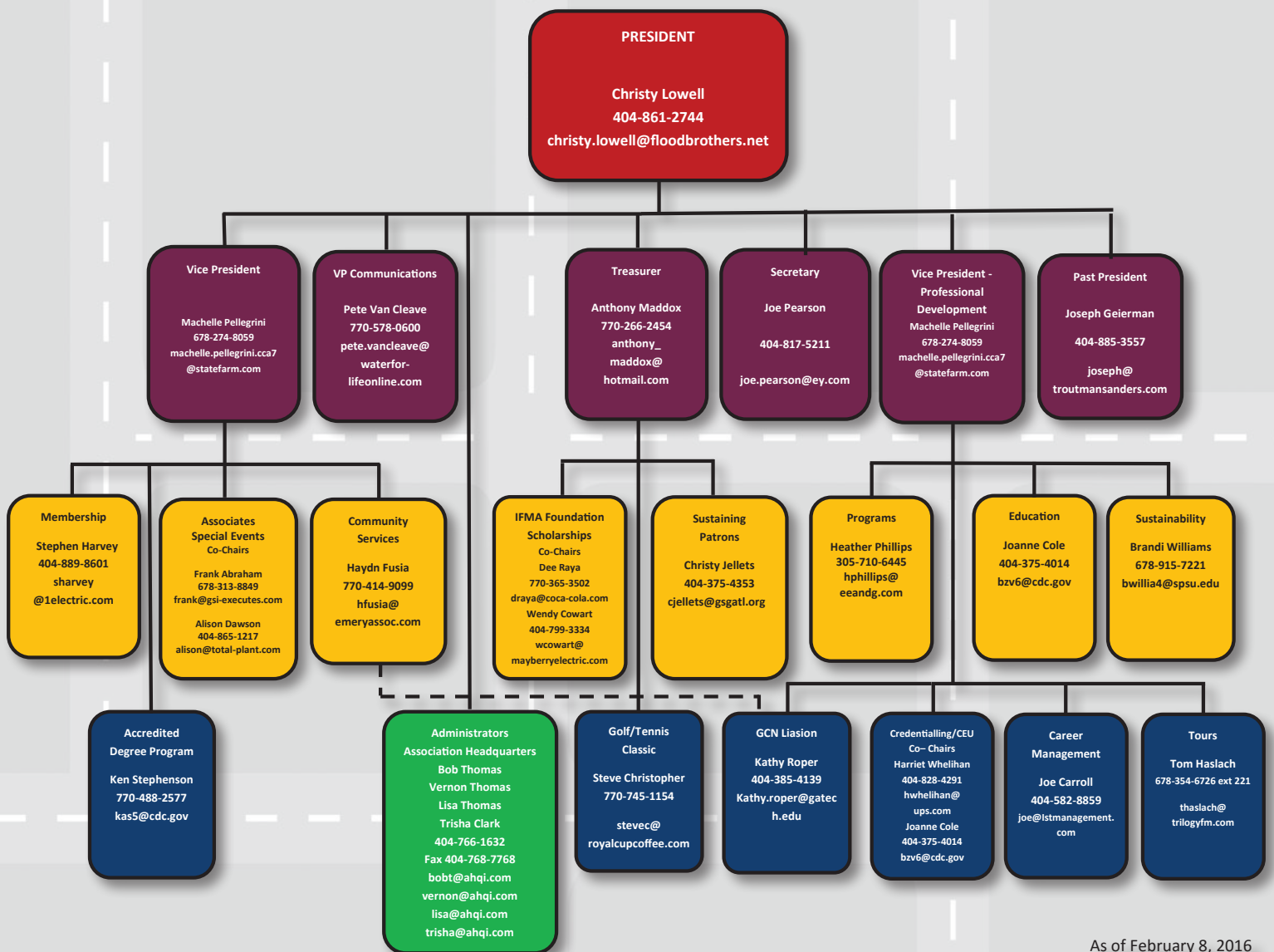
Total IFMA Atlanta Membership by Year



June 2016 IFMA Atlanta Membership by Category



2015-2016 IFMA Atlanta Annual Report



As of February 8, 2016



665 Red Oak Road
Stockbridge, GA 30281