

**International  
Facility  
Management  
Association**

**IFMA**  
Atlanta

**Featured Articles**

**In Katrina's wake - pg.6**

**Luncheon Review - pg.3**

**Maximize Your Membership - pg.4**

A photograph of two women standing indoors, both wearing large, colorful sombrero hats. The woman on the left is wearing a black and white patterned sleeveless top and is holding a colorful piñata. The woman on the right is wearing a dark grey pinstriped suit jacket over a light blue top. They are both smiling at the camera. The background shows a framed picture of a still life with fruit and a wooden wall.

**THIS MONTH IN IFMA**

**Networking for Success - October 6, 2005**

**Fall Classic - Emerald Pointe Golf Club**

**October 13, 2005, 9:00am**

**It's the Fall Classic!**

**Outing - CNN October 18, 2005**

**World Workplace Conference - October 23-25**

President - Rachel Blankenship, *Best Software*, [rachel.blankenship@bestsoftware.com](mailto:rachel.blankenship@bestsoftware.com)

Vice-Presidnet - Stewart Smith, *Kilpatrick Stockton*, [stsmith@kilpatrickstockton.com](mailto:stsmith@kilpatrickstockton.com)

Treasurer - Chet Bounds, *Milliken*, [chetbounds@milliken.com](mailto:chetbounds@milliken.com)

Secretary - Christine Vest, *Amoco Fabrics & Fibers Company*, [vestcn@propexfabrics.com](mailto:vestcn@propexfabrics.com)

Vice President Professional Development - Ellen Townsend, *North Highland Company*, [etownsend@northhighland.com](mailto:etownsend@northhighland.com)

Past President - Mitch Rabil, *Turner Properties, Inc.*, [mitch.rabil@turner.com](mailto:mitch.rabil@turner.com)



## CONTACT US!

Newsletter Editor: Monte Townsend  
 T: 678-547-0133 F: 678-547-0132  
 If you would like to submit a newsletter article, please contact  
[ifmanews@rentacrate.com](mailto:ifmanews@rentacrate.com).

**Reminder: The deadline for submitting articles is the third Wednesday of each month.**

## STAY CONNECTED WITH [www.ifmaatlanta.org](http://www.ifmaatlanta.org)

Where do you need to go to stay connected for IFMA Atlanta? Thanks to multiple recent upgrades, the new IFMA Atlanta website at [www.ifmaatlanta.org](http://www.ifmaatlanta.org) is the place. Check out the hotlinks to upcoming and pending events. There is no guesswork once you get there. All of the information you need (locations, times, registration processes) is at your fingertips. Check out the wider screen, and flashing front page sustaining patrons' icons. Even the newsletter you are currently reading is on the site. Put it on your favorites list, tell friends and colleagues, the new IFMA website is the source to "connect" at: [www.ifmaatlanta.org](http://www.ifmaatlanta.org).

## IFMA ATLANTA STRATEGIC PLAN 2005

### Vision

To serve as the resource and representative for facility management.

### Mission

To provide exceptional products, services, and opportunities that support and advance the facility management profession.

### Goals

1. Support a community that fosters vitality, momentum and impact for the facility management professional.
2. Anticipate and prioritize the resources required to enhance effective delivery of products and services.
3. Inspire passion for the facility management profession that compels facility practitioners to want to join the IFMA network, engages volunteer leaders and attracts / retains top-talent to the full-time staff.
4. Sustain IFMA's financial integrity to achieve and fulfill our mission.

### Purpose

IFMA is a member-centered association that exists to guide and develop facility management professionals. In support of its members, IFMA promotes the Facility Management profession by providing leadership, recognition and standards of excellence.

Please check out the website at [www.ifma.org](http://www.ifma.org) for more details.

## PRESIDENT'S MESSAGE

As we come together in October to celebrate IFMA's 25th anniversary, we are thrilled to have The Fall Classic scheduled on the 13th and World Workplace on the 23rd. The Fall Classic is our annual celebration with partner, Georgia Tech, to support the Masters Degree Program in Integrated Facility & Property Management. It is held at Emerald Point in Lake Lanier Islands and we have well over 100 members registered thus far. World Workplace 2005, which will be held in Philadelphia, is one of our strongest educational tools to stay current with industry standards, trends, and technology. Currently, we have over 50 members attending World Workplace. Make sure you register for both of these events soon as the dates are fast approaching. And, trust me these are events you won't want to miss!



Rachel Blankenship

### *Let's Do Our Part in the Aftermath of Hurricane Katrina*

We're so proud of our members and IFMA International staff for their quick call to action to offer assistance and support to our neighbors in the Gulf States. IFMA International sent a letter of condolence and support for the members and their families who may have been adversely affected. They also made a monetary donation to the American Red Cross and encourage members to support them as well. For a complete update on International's recovery efforts, please check their website at <http://recovery.ifma.org>

### *We need your help!!*

We've reported numerous times that our goal in 2005 is to increase professional membership by 10%, to date we have 21 new professional members. Welcome to all the new members and congratulations to the Atlanta Chapter for all their efforts. We are only 2% away from hitting our target. Let's not lose momentum and continue to focus our attention to recruit those remaining professionals. IFMA International is working closely with a strategic marketing partner, MGI, to develop campaigns, increase awareness and attract more professional members. However, I believe it's up to each and every one of us to reach out and tap into those professionals that have never heard of IFMA Atlanta. I'd love to hear your ideas on how we can reach them and get them involved in our award winning chapter.

In closing, please note the past 25 years would not have been a success without your support. We look forward to continuing our mission to serve as a resource and representative for facility management for the next 25 years and beyond!

Rachel Blankenship  
 President - IFMA Atlanta 2005/2006  
 Sage Software, Sr. Director of Facilities North America

## DIRECTIONS TO FALL CLASSIC

### **Emerald Pointe Golf Club**

**Directions:** Lake Lanier Islands is located 45 minutes northeast of downtown Atlanta.

Take I-85 North to I-985 North to Exit 8 (Friendship Road). Turn Left on Friendship Road. Friendship Road will turn into Holiday Road and will end at the gates of Lake Lanier Islands.

**From North Atlanta:** Take Georgia 400 to Exit 14 (Ga. Hwy. 20).

Travel East on Ga. Hwy. 20. Turn left onto Peachtree Industrial Boulevard.

Turn left onto Friendship Road. Friendship Road turns into Holiday Road and ends at the gates of Lake Lanier Islands

## SEPTEMBER LUNCHEON PHOTOS



Raise your hands if you've been ignited!



### What you missed

Terrific! Enjoyable! Enlightening! Thought Provoking! Dr. Fred Broder was our featured speaker for September's luncheon. Fred motivated the audience and gave us all a 'wake-up' call we will never forget. He taught us how to untap the hidden potential in our careers as well as personal life. For more information on Fred Broder please visit [fredbroder.com](http://fredbroder.com).

Fran Rissland - Programs Chair - IFMA Atlanta 2005  
A-R-T & Associates, Inc.  
[fran.rissland@artandassociates.com](mailto:fran.rissland@artandassociates.com)



Is that Lynn in the background or does Wade have a tiny mexican on his shoulder?



We're ignited!



I'm just burned out...



**WORLD WORKPLACE  
CONFERENCE & EXPO**

**More Than An Event....An Experience!**

Register now for IFMA's World Workplace to lock in early registration rates. Visit [www.worldworkplace.org](http://www.worldworkplace.org) today!

As an IFMA member, you have access to a wealth of FM networking and educational opportunities. Don't miss out on the most all-inclusive experience available to members: IFMA's World Workplace Conference & Expo!

Advancements in the FM profession are being set by IFMA and members just like you. IFMA's World Workplace is the annual gathering for your Association, and this year, we're celebrating 25 years as the only international association dedicated to serving and representing the FM profession.

Take advantage of your IFMA membership and attend the biggest FM event of the year at a discounted rate! Register by Aug. 26 to save \$250 off the regular nonmember three-day rate.

Get the full IFMA member experience! Join us at IFMA's silver anniversary celebration in historic Philadelphia! For more information on attending, exhibiting or sponsoring, visit [www.worldworkplace.org](http://www.worldworkplace.org) or call 713-623-4362.

Contact Lynn Moorman, IFMA Atlanta's World Workplace Coordinator if you have any questions at 678-947-0579 ext. 26, or send an e-mail, [lynn.moorman@artandassociates.com](mailto:lynn.moorman@artandassociates.com).

**Start planning your experience now!**



[www.ifmaatlanta.org](http://www.ifmaatlanta.org)

**Don't forget!!  
The Fall Classic is this month!  
October 13, 2005**

**MAXIMIZE YOUR IFMA  
MEMBERSHIP**

**Are you taking advantage of your IFMA Atlanta Membership?**

IFMA provides many benefits to its members. IFMA Atlanta goes further than that. Your IFMA membership pays you back, when you take advantage of the variety of educational, community service and social opportunities. The monthly educational meetings, which are based on IFMA International's nine core competencies, cannot be everything to everyone. These meetings provide a general overview of relevant topics, where you may at best find a new idea or meet someone who can help you in your professional or personal growth. That is why you must participate in Chapter activities to make important connections. Here are a few ways to make those connections.

Because time is limited at the monthly meetings, have you considered paying just a little extra and joining a Council? Councils are smaller groups within IFMA, which provide valuable opportunities to focus on topic discussions, relationship building, roundtables, etc. For instance, I just became a member of the Headquarters Council. I look forward to meeting and communicating with Professional members who manage headquarters facilities for their firms. Other Councils focus on healthcare, education, manufacturing, etc.

IFMA International does a good job of surveying professionals for benchmarking information relative to topics like FM salaries, operations and maintenance, space allocations, etc. These reports are usually free to participants, but can be purchased through IFMA's online Bookstore.

I have found that my business relationship with many IFMA Atlanta Associates has greatly enhanced my knowledge. I can strongly say that the Associates are my very best resources when I need a white paper, an ergonomics specialist, or other contacts in the industry. Associates are out in the market every day, and they know which professionals have the most experience and are willing to share their knowledge. The most active Associates work on many of our projects and may know as much about the projects as the in-house professionals. Without the support of our Associates and their participation on the Board and on committees, we would not be an award-winning chapter. I count many of them among my most important business friends.

It may not always be obvious to IFMA members who do not regularly attend chapter-sponsored functions where they can find all these resources. I encourage you to get involved in committee work, attend the Fall Classic fund raiser and the Spring IFMA Showcased events, World Workplace, and other social activities. You are not expected to attend every function, but wisely chosen activities can expand your network of business relationships.

Am I getting full benefit of my IFMA membership? You bet.

Joyce Roper, Corporate Facilities Manager,  
Coca-Cola Enterprises Inc.

**GEORGIA TECH CORNER**

**In Need**

Kathy Roper

The Georgia Tech Integrated Facility and Property Management graduate program is developing processes to bring our program to Distance Learning or ONLINE in the near future. This means that others in your organization, outside of Atlanta, could register and attend courses via the Internet to gain a full Masters degree without having to move to Atlanta. We are seeking candidates globally who wish to learn through video, Internet collaboration and flexible, dedicated time to their studies. For more information on the Distance Learning option for Facility Managers, please visit our web site at [www.bcprogram.com](http://www.bcprogram.com) and click on the New Online Graduate (MS) Program link.

If you have questions you can also contact Professor Kathy Roper at 404-385-4139.



**JOB POSTINGS ONLINE**

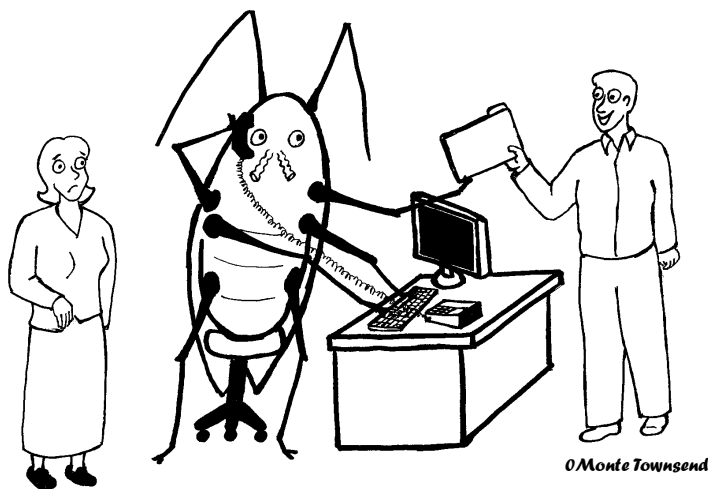
Looking for a new job?  
Know of a vacant position?

Check out the job posting section of [www.ifmaatlanta.org](http://www.ifmaatlanta.org). Enter the Career Services section to post a job. Enter your membership number to view available positions.

This website highly benefits our members, so start using it today. Call Brant Bosley with any questions at 404-392 2284. Call Joe Carroll for resume critique and career counseling at 404-582-8859.

**Facility Funnies**

Well, since we were not able to exterminate them, we decided to put them to work



**CAREER SERVICES PHOTO**



Pictured in the photo are from left to right back row: Malcolm Weiss, Scott Johnston, Committee Chair Jean Lusso, KirK Gravett, Chris Vest, Gene Meany

Left to right in front row: Doris Beck, Bonnie Britt-Corbin, John Robinson, Andrea Noland, Brant Bosley

Not Pictured: William Broome, Joe Carroll, Steve Christopher, Kathy Farley

**CAREER SERVICES EVENT**

Who Should Attend: All IFMA Atlanta Chapter Members

Date: October 6, 2005 Time: 5:30 PM - 8:30 PM

Location: 191 Peachtree Street, 50th Floor Dining Room, Atlanta, GA 30303

Topic: Networking For Success Panel Discussion  
Learn the techniques to network within your own company, through your IFMA contacts, and with industry experts to enhance your existing position or look for a new position.

Cost: No Charge (free hors d'oeuvres, door prizes and free parking) (first 50)

The Speakers:  
David Brookmire, Founder, Corporate Performance Strategies  
Jim Cichanski, President & CEO, Flex HR  
Liz Fitzgerald, President, XChange Consulting, Inc.  
J. Patrick Haly, President, National Personnel Service  
Brian Ray, Founding Director, Crossroads Career Network

EARN CEU CREDITS:  
Earn 1 CEU and 1 CEU/FMP Maintenance Point

Don't miss this exciting opportunity to learn networking strategies and to network with our members and HR experts..

To Register: Go to [www.ifmaatlanta.org](http://www.ifmaatlanta.org).

**Don't forget!!**

**The Fall Classic**  
**October 13, 2005**

**COMMUNITY SERVICE**

**In Katrina's Wake**

By now everyone has seen the reports in the media showing the unbelievable destruction and hardship that has devastated communities along the Gulf Coast. IFMA has sent a letter of condolence and support for members and their families who may have been adversely affected by Hurricane Katrina. The IFMA staff, board, council and chapter leaders also participated in a special teleconference to discuss IFMA's recovery planning efforts and to hear specific needs from those in affected chapters. Since the onset of the recovery effort, the IFMA Webmasters have restructured contingency planning and disaster recovery information on the IFMA Web site to address current needs and to promote future planning. It can be accessed from the IFMA home page or directly at <http://recovery.ifma.org>. Members in need of immediate assistance for essentials (food, water, shelter, clothing, etc.) may contact IFMA directly through a special e-mail address, [recovery@ifma.org](mailto:recovery@ifma.org), linked from the recovery Web site. This address is monitored continuously by the IFMA staff.

Members needing facility management-related help with their buildings may join the special listserv: [ifmakatrinahelp@listserver.ifma.org](mailto:ifmakatrinahelp@listserver.ifma.org). IFMA members in the Gulf Coast already have been added to this listserv. Everyone else who would like to join the listserv may do so by sending an e-mail to the address with "subscribe" in the subject line. This can be used to make general or specific requests for aid and to volunteer expertise or resources.

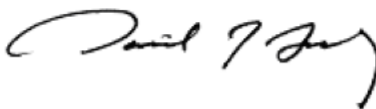
As a global organization, IFMA has selected the International Red Cross Disaster Recovery Fund as the preferred provider of aid. The overall effort is being directed out of the Red Cross' U.S. headquarters facility that is staffed and equipped to handle the challenge. Cash donations are especially needed because it enables quick acquisition of resources and is the most flexible option.

Facility management professionals are accustomed to handling emergencies and to responding professionally, personally and generously. Whatever you decide to do to aid in the recovery effort, it is greatly appreciated by those who have lost most or all of their possessions. Hurricane Katrina will leave a tragic and lasting impact on this entire country. IFMA is very much like a family; during this difficult time and what is expected to be a prolonged recovery period, please join us in keeping all our affected members in our hearts and thoughts every day.

Sincerely,



Joseph M. "Matt" Dawson  
Chairman, Board of Directors



David J. Brady  
President and Chief Executive Officer

**CFM ARTICLES FOR POINTS**

Attention all CFMs! You can receive CFM Maintenance Points for writing educational articles in Industry Related Publications including our Chapter Newsletter.

Please submit any articles of educational value to Monte Townsend at [ifmanews@rentacrate.com](mailto:ifmanews@rentacrate.com).

**IFMA ATLANTA CHAPTER  
CFM COORDINATORS**

Clara M. Smith, CFM - CMS  
Enterprises

Cheryl Waybright, CFM, CFMJ, - CB  
Richard Ellis

**ASK ME ABOUT CFM**

As a benefit to the Atlanta Chapter Membership, the Professional Development Committee plans to have members with CFM designation wear ribbons at each monthly meeting. Professionals and Associates are encouraged to discuss the benefits of getting CFM certification and information on taking the exam during the networking session before the meeting. Learn what certification is all about with other members who have become Certified Facility Managers. Ask questions, get the details, maybe hook up with a study partner.

Cost? Experience required? Qualifications? Information on the test? Bring your own questions. Look for the CFM ribbon attached to member name tags.

**MONTHLY CFM EXAM QUESTIONS**

1. Workplace safety for tenant employees is the responsibility of:
  - A. The tenant employer
  - B. The building owner
  - C. The building manager
  - D. OSHA
2. In commercial construction, an interior wall with studs is:
  - A. Always load bearing
  - B. Usually load bearing
  - C. Always non-loading bearing
  - D. Usually non-load bearing
3. Activation of a smoke control system is best done by operation of:
  - A. Smoke detectors
  - B. Manual pull stations
  - C. A sprinkler system
  - D. Heat detectors
4. The most common means of exposure to a hazardous chemical is through:
  - A. Absorption
  - B. Injection
  - C. Ingestion
  - D. Inhalation



## Educational Seminar

On September 15, 2005 IFMA Atlanta was honored to have Larry Biester, Sales Manager of Aviation and Assembly for Milliken, present "Getting to Synergy". Approximately 20 individuals participated in communication exercises and interactive discussions. The activities demonstrated the tools required to build sustainable verbal exchanges by using more effective communications methods. By the end of the seminar our IFMA members learned how to make conflict a gift not an obstacle. The attendees also, gained valuable knowledge on understanding important skill sets needed to develop top performing teams and organizations. IFMA Atlanta greatly appreciates Mr. Biester educating our chapter on this challenging subject.



## CNN TOUR

### Tour - CNN Studio and Retail Center

The Professional Development Committee announces the fourth and final event in its 2005 tour series on Tuesday, October 18 at the newly renovated CCN Studio and Retail Center.

You won't want to miss this one!!

Our own Mitch Rabil will lead us through an inside look at this globally recognized media center. He will share his insight into the logistics of the renovation projects goals and the "lessons learned" of operating a very active workplace during a construction renovation.

Check- in for the tour will begin at 3:50pm and the tour will begin promptly at 4:10pm. We have reserved a block of 20 tickets. The cost for the tour is \$10.00.

The deadline to register for this event is Friday, October 15, 2005. On line registration and complete details and directions can be found on the IFMA Atlanta website.

Following the tour the Special Events committee will be hosting a happy hour at McCormick & Schmidt's in CNN Center.

Register Online at [www.IFMAAtlanta.org](http://www.IFMAAtlanta.org)

For questions please contact Nancy J. Cartledge, AIA Associate Principal TVS Interiors  
t 404.946.6662 f 404.682.4662 email [nancyc@tvsa.com](mailto:nancyc@tvsa.com)

Sponsored by:

A S D



## ROUND TABLE

### Protecting your Ass....ets Roundtable

Sign up for the unique opportunity to share and discuss security expertise!

Your chapter's International Committee is bringing Atlanta's top facility security brains together for a dynamic panel discussion roundtable.

The security buzz:

PEOPLE - PLACE - PROCESS - DISASTER RECOVERY

Egress - building - organization - Backup

Protect ALL your companies' assets

Are you ready? Be sure by joining us!

Where? Georgia Tech Conference Center  
800 Spring Street, at the intersection of  
Spring St & 5th St

When? Monday November 14 from 7:30  
until 9:30

Breakfast will be served!

**Fall Classic  
October 13, 2005**



## 2005 IFMA ATLANTA SUSTAINING PATRONS

ABM Family of Services  
 AIA  
 Aircond  
 Allied-Barton Security  
 Andrew Rissland Turpen  
 ASD  
 Baker Audio  
 BC Group  
 Bonitz Flooring Group, Inc.  
 Carithers, Wallace & Courtenay  
 Carole Parks Catering  
 Carter & Associates  
 CB Richard Ellis  
 Choate Interior Construction  
 Contract Marketing  
 Corporate Environments of GA, Inc.  
 Cort Furniture Rental  
 Dekalb Office Environments  
 Flood Brothers Relocation  
 Geiger  
 Gensler  
 Graebel Atlanta Movers, Inc.  
 Haworth, Inc.

Hendrick, Inc.  
 Herman Miller, Inc.  
 Humphries & Company  
 IntraSpec  
 Invista  
 Ivan Allen  
 Jova Daniels Busby  
 Kimball  
 Malcolm B. Weiss & Assoc.  
 Malone Construction  
 Milliken  
 Mohawk Group  
 NFL Officeworks  
 Royal Cup, Inc.  
 Southern Business Systems  
 Steelcase, Inc.  
 Trilogyfm  
 Walter Hopkins  
 Wegman Associates

## MEMBER PROFILES



**NAME:** Lee Sheftel  
**COMPANY:** Roof Restoration Services  
**EMAIL:** LeeSheftel@roofs-online.com  
**EDUCATIONAL BACKGROUND:**  
 BS Marketing- College degree  
**FAVORITE VACATION DESTINATION:** New York

**HOW LONG HAVE YOU BEEN AN IFMA MEMBER?** 2 years.

**WHAT IS THE MOST CHALLENGING ASPECT OF YOUR PRESENT JOB?**  
Getting customers to realize there are no miracles.



**NAME:** Sid Berkstresser  
**COMPANY:** Grubb & Ellis Management Services, Inc.  
**EMAIL:** sidberk@us.ibm.com  
**EDUCATIONAL BACKGROUND:**  
 BS in Industrial Engineering, Auburn University  
**FAVORITE MOVIE:** Shrek  
**FAVORITE VACATION DESTINATION:** North

Georgia mountains

**HOW DID YOU GET INTO THE CAREER YOU ARE IN NOW?** Most pre-college jobs were building construction and my last IE job also included construction and facilities maintenance. When an opportunity came to review my career choices, I made a change to FM.

**HOW LONG HAVE YOU BEEN AN IFMA MEMBER?** About five years

**Send your Member Profile and  
 Photo to [ifmanews@rentacrate.com](mailto:ifmanews@rentacrate.com)  
 or fax to 678-547-0132.**

**International Facility Management Association**  
 Atlanta Chapter  
 1185 Willingham Drive  
 Atlanta, GA 30344



## DIRECTORY UPDATE

Note corrections to mailing label at right and fax to 713-623-6124. Include phone/fax numbers.

FIRST-CLASS MAIL  
 U.S. POSTAGE PAID  
 PERMIT NO. 650  
 NORCROSS, GA

# IFMA Atlanta's Fall '05 Classic October 13, 2005

## SPONSORSHIP OPPORTUNITIES

I am interested in sponsoring the following:

- LONGEST DRIVE \$500.00 (1)
- HOLE SPONSOR \$300.00 ea. (32)
- PREMIUM HOLE SPONSOR \$750.00 (5)
- CLOSEST TO THE PIN \$500.00 (1)
- BEVERAGE CART \$500.00 ea (2)
- LUNCH \$1000.00 (1)
- TENNIS \$750.00 (1)
- HOLE-IN-ONE CONTEST \$500.00 (1)
- DINNER: \$5000.00 (1)
- ISLAND QUEEN BOAT WINE CRUISE \$2000

**PLATINUM SPONSOR** - Any company who contributes \$5000 or more to Fall Classic through sponsorships or participants


**GOLD SPONSOR** - Any company who contributes \$4000-5000 to Fall Classic through sponsorships or participants

**SILVER SPONSOR** - Any company who contributes \$3000-4000 to Fall Classic through sponsorships or participants

**BRONZE SPONSOR** - Any company who contributes \$2000-3000 to Fall Classic through sponsorships or participants

If you would like to sponsor a door prize  
or goody bag please  
contact Gail Herndon at  
gherndon@choateco.com or 678-892-1237.





The IFMA Atlanta Special Events Committee will be hosting a Holiday Cooking Class at The Insperience Studio in Buckhead. One of Atlanta's premier chefs, John Saxon, former Executive Chef for the Cherokee Town & Country Club, will teach you how to prepare:

- Herbed Crepe & Lobster Salad "Package"
- Rosemary-Dijon Pork Wellingtons
- Mini Baked Potatoes with caviar, Crème Fraiche & Dill
- Pumpkin Biscuits with Duck Breast

...And many other delicious Hors d'oeuvres.

Registration is \$40 per person. This includes, food, wine and tons of fun!

# Holiday Cooking Class

November 3

6:00 pm-8:30 pm

Insperience Studio

3232 Peachtree Rd., Suite C

In the Buckhead Place Shopping Center, next to Marshall's

Sponsored by:



JONES LANG  
LASALLE<sup>SM</sup>

