



IFMA ATLANTA 2003 EXECUTIVE BOARD

PRESIDENT

Tom Haslach
Millicare Commercial Carpet Care
thaslach@millicare.net

VICE PRESIDENT

Mitch Rabil
Turner Properties, Inc.
mitch.rabil@turner.com

TREASURER

Doris Duncan, CFM
Accenture
doris.m.duncan@accenture.com

SECRETARY

Rachel Blankenship
Peachtree Software
rblankenship@peachtree.com

PAST PRESIDENT

Dave Flory
CORT Event Furnishings
dflory@cortl.com

2003 IFMA ATLANTA SUSTAINING PATRONS

ABM Family of Services
Aircond Corporation
Andrew Rissland Turpen
ASD
Aviation Constructors, Inc.
Baker Audio
Bonitz Flooring Group, Inc.
Carithers - Wallace - Courtenay
Carter & Associates
Choate Interior Construction
Contract Marketing
Corporate Environments of GA, Inc.
CORT Furniture Rental
DeKalb Office Environments
Double "T" Contracting
Dupont Flooring Systems
Facility Resources Inc.
Geiger
General Building Maintenance, Inc.
Gensler
Graebel Atlanta Movers, Inc.
Haworth, Inc.
Hendrick, Inc.
Herman Miller, Inc.
Humphries & Company
Initial Contract Services, Inc.
Interface/Resource Georgia
KI
Kimball
Knoll
Leapley Construction
Malcolm B. Weiss & Associates
Malone Construction
Millicare Environmental Services
Milliken Carpet
Royal Cup Coffee, Inc.
Southern Business Systems
Steelcase, Inc.
Tandus Group
TVS Interiors

MONTHLY MEETING



Wednesday, March 19, 2003 - Park Tavern

"CONTINUING THE TRADITION"

IFMA Atlanta Showcased is our 2nd Annual celebration. It is a time to celebrate, understand, recognize, and appreciate the fine efforts of our community services committee, our Associates of IFMA Atlanta, and our partnership with the YWCA of Greater Atlanta and the Fraser Center. IFMA Showcased is also a fundraiser, a vendor fair, and a silent auction.

Terrific food and drink served waiter style in a spectacular setting. Silent auction items ranging from a three hour consultation with Vern Yip of Trading Spaces to a hot air balloon ride for two w/ champagne. Music and Theatrical performances by students of the YWCA. \$1000.00 door prize given to one lucky attendant.



Please see the registration insert for more details.

IN THIS ISSUE

PG 2

- President's Message
- CFM Exam Questions
- Career Services

PG 3

- The FM Edge
- Upcoming Events and Seminars

- Georgia Tech Corner
- Attention IFMA Associate Members

PG 4

- IFMA Atlanta Member Called to Serve
- Cartersville Luncheon
- Member Profiles

PG 5

- Tour of Turner Techwood Campus
- Career Services SCA Meeting at GA Tech
- February Luncheon

PG 6

- The Microbial Myth

- CFM Lunch
- CFM Study Group

PG 7

- IFMA Atlanta Well Represented at WWP Japan

PG 8

- Program Calendar



CONTACT US!

Newsletter Editor: Fran Rissland
 T: 678-947-0579 x15
 F: 678-947-8593
 If you would like to submit a newsletter article, please contact fran.rissland@artandassociates.com

MONTHLY CFM EXAM QUESTION CORNER

1. Who are the facility manager's customers?
 - a. Other department managers
 - b. Staff and other employees
 - c. All building occupants
 - d. Executive Management
2. What process for forecasting space needs is most effective for a sales or retail facility?
 - a. Department Growth
 - b. Percentage Sales Growth
 - c. Period Growth
 - d. Employee Growth
3. What process for forecasting space needs is most effective for a production or manufacturing facility?
 - a. Department Growth
 - b. Production Growth
 - c. Period Growth
 - d. Employee Growth
4. What is the primary goal of benchmarking?
 - a. Networking with peers
 - b. Sharing ideas and issues
 - c. Improving operational performance
 - d. Developing management skills

Answers: 1-C, 2-B, 3-A, 4-C

CAREER SERVICES

Professional and Associate members, if your company is looking to add positions within real estate, interior design, government, outsourcing, building operations, consulting, general facilities or sales. Please contact the Career Services committee. We are working to help the many experienced facilities managers in our chapter find job opportunities.

This service is a free resource and will give your company access to our strong list of candidates. Please feel free to contact Steve Christopher at stevec@royalcupcoffee.com or 404-355-5487.

PRESIDENT'S MESSAGE

"The sweetest sound of all is praise"

- Xenophon



Special thanks, changes to the board, and welcome:

I would like to send out special thanks to Kathy Farley of King & Spalding. In January, your chapter was faced with the relocation, to Birmingham, AL, of our good friend Joe Holcombe, of Carter and Associates. Joe was our chapter treasurer.

IFMA By-Laws require the officers of the executive board to move up in progression. Our chapter secretary, Doris Duncan, of Accenture, moved up from secretary to treasurer. This left us without a chapter secretary.

Your executive board asked Kathy Farley if she would take this role on behalf of the chapter until we were able to find a person to take the responsibility "full-time". Kathy had been our chapter secretary a few years ago, and responded by saying "I would be happy to help the chapter in any capacity that I am in need." This was a huge relief to all members of the executive board. Thank you Kathy for all you do to make IFMA Atlanta so great.

As luck would have it, one week after Kathy accepted this new role, Rachel Blankenship, Facility Manager at Peachtree Software, stepped forward and said she would like to make a commitment to IFMA Atlanta and relieve Kathy of the responsibility, "full-time", as our new chapter secretary. Welcome Rachel. You may have seen Rachel's profile in our new "Member Profiles" section in February's newsletter. If you missed it, you can find it on our website, under newsletters, and archives.

"The people, definitely the people":

I had the opportunity to visit with one of our members a few weeks ago, Pat Dingels of Taylor Mathis and Verizon Wireless, at their southeastern HQ in Alpharetta. At one point during our conversation she said to me, "Tom, I have been a member in most of the professional organizations in Atlanta, but I really like IFMA Atlanta the best." I asked her why she felt IFMA Atlanta was more special to her than the others, and she responded, "The people, definitely the people." "IFMA Atlanta members are more professional."

IFMA Showcased:

IFMA Atlanta Showcased is a special evening event March 19, 2003, at the Park Tavern overlooking Piedmont Park, to Celebrate our community services partnerships with the YWCA of Greater Atlanta, welcome back the Frazer Center as an additional community services partner, and to say thank you to our associate members, and their companies, for the time, money and effort they give to make IFMA Atlanta GREAT! We will be raising money for our partners through our vendor fair and silent auction. I look forward to seeing you at the big event.

"You are what you love, not what loves you."

Have you seen the movie Adaptation? It stars Meryl Streep and Nicholas Cage. Late in the movie, the character Donald turns to his brother Charlie and tells him "I live my life with the idea that you are what you love, not what loves you." I found it to be a profound statement. It reminded me of an impression made on me the week before during another IFMA lunch meeting.

I had the good fortune to visit with Tom Vernon of ADP. As I look back on that luncheon and the conversation we had I came to realize that Tom is what he loves. Tom is a native Atlantan, born and raised. He is passionate about Atlanta. He loves his job, his city, his wife, his two boys (one at Ga Tech, the other at GA State), and he loves his condominium in midtown. He also appears to love exercise, having run many a Peachtree Road race and having just returned from a family ski trip.

It is inspiring to be with people who are what they love and share it with others. I believe these are the types of people Pat Dingels talked to me about earlier in the month. I think we have many in our membership who are what they love, and it makes me proud to be a part of this organization.

Tom Haslach

IFMA Atlanta President 2003
 Managing Partner
 MilliCare Commercial Carpet Care

THE FM EDGE

"Leading the Sustainable Revolution" - One Day Workshop

Now, for the first time, IFMA offers a facility professional's toolkit for implementing the best sustainable practices in existing buildings. Leading the Sustainable Revolution is a rational approach to sustainable FM—a framework that advances the business justification for championing sustainable practices in the facilities you manage today.

Date: Wednesday, March 12, 2003

Time: 8:00 am - 5:00 pm

Location: American Heart Association
1101 North Chase Parkway
Marietta, GA 30067

Cost: \$249 for members
\$299 for non-members

Credits: 1 continuing ed unit
12 CFM points

Register online at www.ifma.org/profdev/fm_edge/sustainability/index.htm. Or register onsite the day of the event.

IFMA's fresh approach to sustainability emphasizes practical FM. Attendees will receive a powerful leadership model and will have the opportunity to build an action plan tailored to their specific facilities. You'll see examples from commercial and government applications such as:

- conserving energy and water resources
- managing waste and materials
- improving air quality
- incorporating strategic automation
- purchasing new products and monitor/extend product life cycles
- effectively planning and administering a maintenance budget

Learn how to measure your facility's current level of sustainability, determine the processes that will let you improve it, and gain management commitment and resources for implementing the changes needed to increase your facility's sustainability.

UPCOMING EVENTS AND SEMINARS

World Workplace Japan 2003

March 18-20, 2003
Pacifico Yokohama Convention Center
Yokohama, Japan
For more event information: www.worldworkplace.org/japan

Crisis Management for Facility Managers On-line Course

April 14-June 2, 2003
For more information: www.msu.edu/user/facmgt
Contact: Debbie Jesswein
Phone: 517-353-3938
Email: facmgt@msu.edu

IFMA World Workplace Europe

Online Registration Now Open!
May 11-13 Prague, Czech Republic
For more information: www.workplace.org/Europe/2003



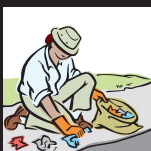
GEORGIA TECH CORNER

Have you been in Facility Management for years and feel the need for growth? The Georgia Tech Integrated Facility & Property Management graduate degree is an alternative to an MBA. For those Facility & Property managers who want expertise in their field, this Master of Science degree provides more targeted training than the broad scope of an MBA. Financial analysis and evaluation methods specifically targeted to facility applications are taught as part of the program, as well as unique facility applications such as evaluation of staffing and outsourcing, CAFM/CADD integration, building condition assessments, benchmarking methods, strategic facility planning, property market analysis, health and risk factors of new and existing buildings, and much more. Evening classes also allow you to continue your career while gaining the MS degree. The opportunity to meet other facility and property managers advancing their careers also provides a strong network of peers within the community. Current enrollment is approximately 70% working professionals. Your classmates, professors and advisors will become valuable contacts throughout your career in facility management. For more information on the Georgia Institute of Technology's Integrated Facility & Property Management graduate program contact Professor Kathy O. Roper, or visit our web site at www.bcprogram.edu.



ATTENTION IFMA ASSOCIATE MEMBERS

IFMA Atlanta board meetings are held the Monday evening before the Wednesday luncheon. There are approximately 20-25 attendees. This is a great marketing opportunity to present your company as well as its products and services to the board for the first 15 minutes of the meeting. If you are interested in hosting a monthly IFMA Board Meeting please contact Tom Haslach for more information at 678-354-6726 or thaslach@millicare.net



Don't forget, IFMA Atlanta's Volunteer Day is Saturday, May 3!



IFMA ATLANTA MEMBER CALLED TO SERVE



IFMA Atlanta Professional Member Darrell Gray, FM at Georgia Tech's Wardlaw building, received his call into active duty January 31, 2003. Darrell had gone to his reserve duty assignment on that Saturday in preparation to go to Germany for two weeks of training February 15, 2003, when he, and his company were told that their training assignment had been cancelled. He was told to plan to be on active duty for the next six months to one year. He did not know where he was being assigned. Darrell's last words to me were, "I hope I see you again." Please keep Darrell in your thoughts and prayers. He is a great man and I am sure a wonderful husband.

Darrell is in the Army National Guard, Unit 277 Maintenance Company, based in Kennesaw, GA. You may email him at dlgray2000@yahoo.com.



Darrell Gray with Vern Yip at January 2003 luncheon

IFMA REMOTE PROGRAM LUNCHEON - CARTERSVILLE

IFMA Atlanta is so pleased to be reaching out to members and prospective members beyond the metro area. Last year, we held two breakfast meetings in the North Fulton area. They were most successful and we will do that again this year. After surveying several members who work up the I-75 corridor, we decided on Cartersville for the next outreach effort. There will be two programs in Cartersville in 2003. We continue to increase our member benefits and services and hope you will see this as a useful addition. Please let us know.

Topic: LEED and Sustainability

Date: Tuesday, March 11, 2003

Time: 11:30 AM Networking
12:00 Noon Lunch and Program
1:00 PM Adjourn

Cost: \$15.00

RSVP: Friday, March 7 - *If you do not make a reservation, you are welcome to join us but please do not plan to have a lunch provided.*

Location: Shaw Industries - Plant X
5225 GA Hwy. 411 SE
Cartersville, Georgia 30120
770-387-8841

If you have questions or would like additional information, please contact Beth Chaplin at 404-522-1835 or bchaplin@knoll.com.

MEMBER PROFILES



NAME: Charles R. Orman, Jr.

COMPANY: CIENA Corporation

EMAIL: corman@ciena.com

HOMETOWN: Alexandria, VA

EDUCATIONAL BACKGROUND:
Computer Operations

FAVORITE VACATION DESTINATION: Key West, FL

HOW DID YOU GET INTO THE CAREER YOU ARE IN NOW? I was part of a downsizing for Eastman Kodak in 1991 and was able to stay with KODAK by obtaining a position in their Facilities Dept. I started out as a Facilities Clerk and worked my way through the ranks. After KODAK I joined the CIENA Corporation in 1996, a fiber optics telecom company. I am the Senior Facilities Manager for the CIENA South facilities including our sales offices across the United States. I have been very fortunate to have Mike Lapidés as my mentor for the last 7 years and he has taught me a great deal about facilities.

TELL US SOMETHING ABOUT YOU THAT YOU ARE MOST PROUD OF: I have a great working relationship with all of my customers here at CIENA and really enjoy coming into work everyday. Facilities is ever changing- it's how I adapt to the changes makes me stronger.



NAME: Kelly Glass

COMPANY: Archer Management Services

EMAIL: kglass@archermgt.com

HOMETOWN: New York, NY

EDUCATIONAL BACKGROUND:
Bachelor of Arts

FAVORITE VACATION DESTINATION: Hawaii

HOW DID YOU GET INTO THE CAREER YOU ARE IN NOW? Fell into marketing first day after graduation and never looked back.

TELL US SOMETHING ABOUT YOU THAT YOU ARE MOST PROUD OF: I juggle the responsibilities of a husband and two children with a very demanding job and travel schedule. Somehow, everything gets done. I have fun at both home and work, and I get to sleep now and then! I guess you could say I'm a master of time management and, these days, that's a tremendous asset.

Let us get to know you! Send your Member Profile to fran.rissland@artandassociates.com or fax to 678-947-8593.

TOUR OF TURNER TECHWOOD CAMPUS

IFMA Professional Development Committee Hosting Turner Tour

On Tuesday, March 4, 2003, IFMA Atlanta members will be touring the new Turner Techwood Campus on 10th Street in Midtown. If you would like to participate, please call Fran Rissland at 678-947-0579 x15 by Monday, March 3rd.

DATE: Tuesday, March 4, 2003

LOCATION: TURNER TECHWOOD CAMPUS

TIME: 4:15 PM - 6:30 PM
Tour will start promptly at 4:30pm

RSVP: To Fran Rissland 678-947-0579 x15 by Friday, February 28, 2003.

RSVP's are MANDATORY in order to get into the building. NO WALK-IN'S ALLOWED



CAREER SERVICES HOSTS STUDENT CONSTRUCTION ASSOCIATION MEETING AT GEORGIA TECH

On Tuesday, February 18th, four panelists presented *Who, How & Why of Facility Management* to about 25 undergraduate Building Construction students. The Student Construction Association (SCA) of Georgia Tech meets monthly for pizza, cokes and information sharing. This was the third year that IFMA Atlanta presented to this association. A wide variety of interests were represented by Nancy Cartledge of TVS Interiors, Ken Green of Essex Engineering, Mike Wilson of CDC/Air Force and Steve Christopher of Royal Cup Coffee. Kathy Roper introduced the panel and moderated the session. Students were actively interested in how to manage their careers after leaving school and asked detailed questions of the panel. Most left with a much better appreciation of the role facility managers play day-to-day and how they can work with them in the future.

FEBRUARY LUNCHEON PHOTOS

Our February 2003 luncheon with Ken Gwinner, Senior Vice President for Turner Properties, was a success. Ken Gwinner displayed a wealth of knowledge and experience in facilities planning, architecture and construction. He clearly shared how his processes work to control and build facilities to meet the customers needs. He has had facilities managers request a copy of his presentation to use in their workplace. Thanks again Ken for an outstanding performance!!





THE MICROBIAL MYTH

A study published recently by Tufts University Medical School in Boston indicates that routine use of antibacterial soaps and antibacterial-coated products may contribute to the increase of antibiotic resistance in the community. It is possible that these substances could encourage bacteria to mutate in ways that make them resistant to antibacterial products, including antibiotics used for treatment of infections.

The "biocide" in question is triclosan, which is found in many antibacterial products such as hand soaps and wipes. Although it was assumed to attack microbes by dissolving the membrane walls of bacteria, researchers have found that it may target a particular enzyme involved in creating the cell walls of the E. coli bacterium, much as an antibiotic would. This would enable the bacterium to actually mutate and build up a resistance to triclosan, rendering the "biocide" virtually useless.

Another concern with the use of antibacterial solutions is that we can only destroy some but not all bacteria. Eliminating only some bacteria leaves a balance of other, stronger bacteria that was otherwise held in check, permitting out of control amplification.

The facts surrounding mold within buildings is that mold is actually a result of another problem. That problem, or cause is water or moisture infiltration. The following ten truths with one lie (number 11) presented below take common understandings and invest in your knowledge.

CFM'S GET 20 CFM POINTS OVER LUNCH

We need CFM's to teach study classes to coach members who want to pursue their CFM designation. We currently have 20 active members who want to take the test. If you are proficient in one of the nine core competencies (finance, real estate, operations/ maintenance, technology) we need your help teaching one study group (1 hour/1 month over the course of this year). It is worth 20 CFM maintenance points. Please contact Clara Smith at clara.smith@mindspring.com or 770-321-8686.

CFM STUDY GROUP UNDERWAY

TECHNOLOGY SECTION
POSTPONED TO 2004

Join your colleagues studying for the CFM exam. We meet weekly on Tuesdays (January through March) in Buckhead from 11:30 to 1:30.

Contact Ellen Townsend at 404.264.6736 or townsend@northhighland.com for more information and directions.

If you are interested in participating in an evening session, please let her know. If there is interest, another study group can be formed. It's your career; take charge.

1. Mold is ubiquitous, on us and within us as well as everywhere throughout our interior and exterior environments.
2. Mold requires three components to survive: food, temperature, and water. The easiest component to control, and thus to control mold, are water sources. Food such as cellulose and temperature (mid 70's) are present by design for human occupation.
3. There are good molds and bad molds. Some molds fight other molds and limit their growth (amplification) and spread.
4. Physiological differences between people and their immune systems result in vastly different responses to a similar exposure. People with compromised immune systems, older persons and very young people tend to suffer the most.
5. Molds are a subset of fungi. The other fungi is yeast which is a common ingredient in recreational beverages and bread. Environmental bacteria are also present that can cause adverse health effects.
6. Today's testing methods are limited and do not necessarily identify molds that are affecting people. Indeed, testing methods are sufficiently limited that accurate assessment of mold exposure to humans is not possible.
7. Sampling can be performed by a variety of methods as shown below. But none of these methods can provide an absolute measure of potential exposure to humans or completely characterize the presence of mold in the environment.
 - a. Bioaerosol (air sampling) samples cultured in the lab identify viable environmental bacteria and fungi, but culturing and identification takes up to two weeks. Viable molds are those that will grow and multiply and thus potentially cause a concern. Airborne sampling is a means for obtaining those spores that can be captured from the air at the time of sampling.
 - b. Air-O-Cell samples indicate the presence of fungal spores, but not bacteria, and some fungal spores that are identified may not be viable (won't grow). Differentiation of some fungal genera is not possible. These sample results are available immediately, but as you can see, the results provide only a part of the requested answer.
 - c. Wipe or bulk samples can be used to identify the genera of bacteria or fungi present on surfaces. Review viable forms can be performed if cultured; otherwise there is no accurate indication of human exposure potential available.
8. Sampling is not always recommended. No exposure levels have been determined as safe, therefore, absolute comparison of results is not possible.
9. Mold remediation requires worker protection because of potential long term effects such as hypersensitivity to bacteria and fungi. OSHA regulations exist for worker protection for long term exposures to dusts, but not specific bacteria or fungi.
10. Numerous bills have been introduced in state legislatures (NY, MA, MD, VA) and in the US Congress, but to date, only California as a "Toxic Mold Protection Act" on the books. OSHA has a proposed Indoor Air Quality Standard, but has not actively pursued it since releasing it in 1994.
11. Bacteria and fungi exposures are toxic. This is false, some are known to be toxic such as the *Stachybotrys atra* genera. According to the Centers for Disease Control and Prevention, Air and Respiratory Health Branch, (CDC) the ground swell of concern for *Stachybotrys atra* exposure has no concern as insufficient evidence exists. CDC Specifically says "In summary, *Stachybotrys chartarum* (*Stachybotrys atra*) and other molds may cause health symptoms that are nonspecific. At present there is no test that proves an association between *Stachybotrys chartarum* (*Stachybotrys atra*) and particular health symptoms. Individuals with persistent symptoms should see their physician. However, if *Stachybotrys chartarum* (*Stachybotrys atra*) or other molds are found in a building, prudent practice recommends that they be removed. Use the simplest and most expedient method that properly and safely removes mold".



IFMA ATLANTA WELL REPRESENTED FOR WWP JAPAN IN MARCH



Ed Rondeau, AIA, IFMA Fellow

Ed Rondeau serves as the Director of Global Operations for Conway Data, Inc., an Association Management Company based in the Atlanta, Georgia area, where he is responsible for association management related assignments in Asia,

Australia, Europe, Latin America and the U.S.

He previously served as the Director of Consulting Services for the Integrated Facility Management business unit of Johnson Controls, Inc., the Manager of Corporate Real Estate for Contel Corporation, the Vice President of Property Management for the National Bank of Georgia, the Vice President of Design and Construction for Arby's, Inc., a Construction Manager for the Coca-Cola Company, and a Staff Architect for Auburn University.

Ed holds an MBA in Real Estate from Georgia State University and a Bachelor of Architecture from Georgia Tech, and is a registered Architect. He was the 1988 President of the International Facility Management Association (IFMA), served as the 1990 Chair of the IFMA Foundation, and was elected an IFMA Fellow in 1992.

He has spoken on corporate real estate and facility management issues throughout the U.S. and internationally including Japan. Ed has authored numerous articles and was a co-author of the book *Managing Corporate Real Estate*, was the lead author of the book *Facility Management* for which he received the 1997 IFMA Author of the Year Award and is a co-author of the book to be published in mid 2003, *The Facility Manager's Guide to Finance & Budgeting*.



Laura Hibbert is a Senior Facility Planner with Jacobs Facilities Inc. Ms. Hibbert's consulting experience has been in strategic planning/programming projects, occupancy planning, facilities master planning, and facilitating client workshops to help clients increase productivity, effective

teamwork, and achieve better work environments. She has experience in corporate and federal building types and has worked on projects throughout the United States and Canada.

Ms. Hibbert's areas of interest include a variety of aspects of the built environment from examining the role of the workplace and how it impacts on employees and organizations, to finding innovative and creative ways to do strategic facility planning and consulting.

She is the author of "Holistic Workplace Planning, Linking Facilities and Corporate Strategic Planning" that was published in the May/June 2002 issue of the *Facility Management Journal*. Her article was also translated and published in a Japanese publication, the *JFMA* September 2002 issue of *Current* magazine.

Ms. Hibbert holds an Interior Design Diploma and graduated Cum Laude with a B.A. in Honors Communication. She is a professional member of the Atlanta Chapter of IFMA and the IFMA FM Consultants Council.



Professor Kathy O. Roper, CFM, MCR

Georgia Institute of Technology
Integrated Facility & Property Management
Graduate Program
College of Architecture, Building Construction
Program

Kathy has more than 20 years in Facility Management with Sprint Communications, Financial Service Corporation, General Services Administration, and American Cancer Society.

She has managed over 1 million square feet of space in nine Southeastern states, including office space, retail stores, call centers and data centers. Additionally, Kathy is certified as both a Certified Facility Manager and Master of Corporate Real Estate, by industry professional associations

Kathy is active and on the Board of Corenet Global, Atlanta Chapter, and the International Facility Management Association, Atlanta Chapter. Kathy is an Atlanta native who has earned both undergraduate and graduate degrees from Georgia State University



Alysins Foster is principal of *Organizations By Design*, a management consulting firm specializing in Strategic Planning, Organization Redesign, Human Resources Planning, and Facility Planning.

She is a results-oriented consultant and coach to executives and their senior management teams on organizational and business strategies. Helping her clients increase their flexibility, responsiveness and overall organizational performance, as a way to maximize profits and sustainability, are the hallmarks of the way Alysins works with her clients. Large-scale planning and change efforts are her specialty. Alysins believes that future growth and positive change, whether for the business, human resources, or facilities begins with an effective planning process.

Alysins has a broad range of experience internationally in both the private and public sectors. Her clients in the private sector include financial services, healthcare, pharmaceutical, telecommunications, manufacturing, service call centers and architectural/interior design firms. Public sector clients include universities and government entities. In her implementation consultant role she works effectively with all levels of staff from senior management to front-line employees, including a wide range of staff in various job classifications, professional disciplines, and of culturally and ethnically diverse backgrounds. As a result, she has also been instrumental in facilitating creative interdisciplinary collaborations up, down, and

across organizations, as well as between organizations. She has a strong personal bias that "people support that which they help to create".

Alysins holds a Masters in Social Work from the University of Michigan and a BA in Psychology from Eastern Michigan University. She has a background in design, and has also completed a 2-year program in Facility Management at the University of California, Berkeley.





PROGRAM CALENDAR

MARCH 4

TURNER'S TECHWOOD CAMPUS - TOUR

MARCH 11

CARTERSVILLE LUNCHEON

Shaw - Plant X

MARCH 12

TOPIC

Leading the Sustainable Revolution: Business Case & Best Practices for Managing Existing Facilities

LOCATION

American Heart Association

MARCH 19

IFMA SHOWCASED

Park Tavern

APRIL 8

NORTH FULTON BREAKFAST

Dekalb Office Environments

APRIL 16

SPEAKER

Panel

TOPIC

Georgia Tech Program

LOCATION

Loudermilk Center

APRIL 23

SPEAKER

Dr. Kashawagi

TOPIC

How to Select the Best Contractor

LOCATION

BellSouth

APRIL 24

BRAVES GAME

APRIL 29

BELLSOUTH METRO CAMPUS - TOUR

MAY 3

VOLUNTEER DAY

MAY 7

NEW/PROSPECTIVE MEMBERS LUNCHEON

MAY 8-9

CFM REVIEW CLASS

Corporate Environments

MAY 21

SPEAKER

Brett Hunsaker

TOPIC

Working Together - Getting the Most from Your Vendor Relationships

CORE COMPETENCY

Leadership & Management

LOCATION

Maggiano's

JUNE 11

SPEAKER

Vern Vereen

TOPIC

Empowering Yourself

CORE COMPETENCY

Human & Environmental

LOCATION

Villa Christina

JULY 16

SPEAKER

Paul Doherty

TOPIC

Brave New World: The Impact of Globalization, Security and Technology on FM

CORE COMPETENCY

Technology/Operations and Maintenance

LOCATION

Loudermilk Center

AUGUST 20

CORE COMPETENCY

Real Estate

LOCATION

Maggiano's

SEPTEMBER 9

CARTERSVILLE LUNCHEON

Shaw - Plant X

SEPTEMBER 10

NEW/PROSPECTIVE MEMBERS LUNCHEON

SEPTEMBER 17

SPEAKER

Brian Shelton

TOPIC

Indoor Air Quality/Mold

CORE COMPETENCY

Human & Environmental

LOCATION

Villa Christina

OCTOBER 7

NORTH FULTON BREAKFAST

Dekalb Office Environments

OCTOBER 16

FALL CLASSIC

OCTOBER 18-21

WORLD WORKPLACE - DALLAS

NOVEMBER 19

CORE COMPETENCY

International Program

LOCATION

Loudermilk Center

DECEMBER 17

CELEBRATION OF EXCELLENCE

LOCATION

Carter Center

International Facility Management Association

Atlanta Chapter
1185 Willingham Drive
Atlanta, GA 30344



DIRECTORY UPDATE

Note corrections to mailing label at right and fax to 713-623-6124. Include phone/fax numbers.

